

Covert Way, Hadley Wood, Hertfordshire, EN4 0LT



Covert Way

A spacious and secluded detached bungalow, positioned in a quiet and prestigious location off Beech Hill, overlooking Covert Way Nature Reserve.

The accommodation, on the ground floor comprises a stunning open plan reception room/dining room/kitchen measuring 32'1 x 31' with the benefit of a wood burning stove, three bedrooms, and a bathroom/WC.

On the first floor there are two further bedrooms both with fitted wardrobes and their own en-suite bathrooms.

Externally there is a beautiful rear garden measuring approximately 145' x 40' with a greenhouse and a mature garden.

The original garage has been converted into a studio/garden room with the benefit of having a shower and WC. To the front there is off street parking for multiple cars.

This property is nearby to Hadley Golf Course, fishing lakes and close proximity to excellent schools.















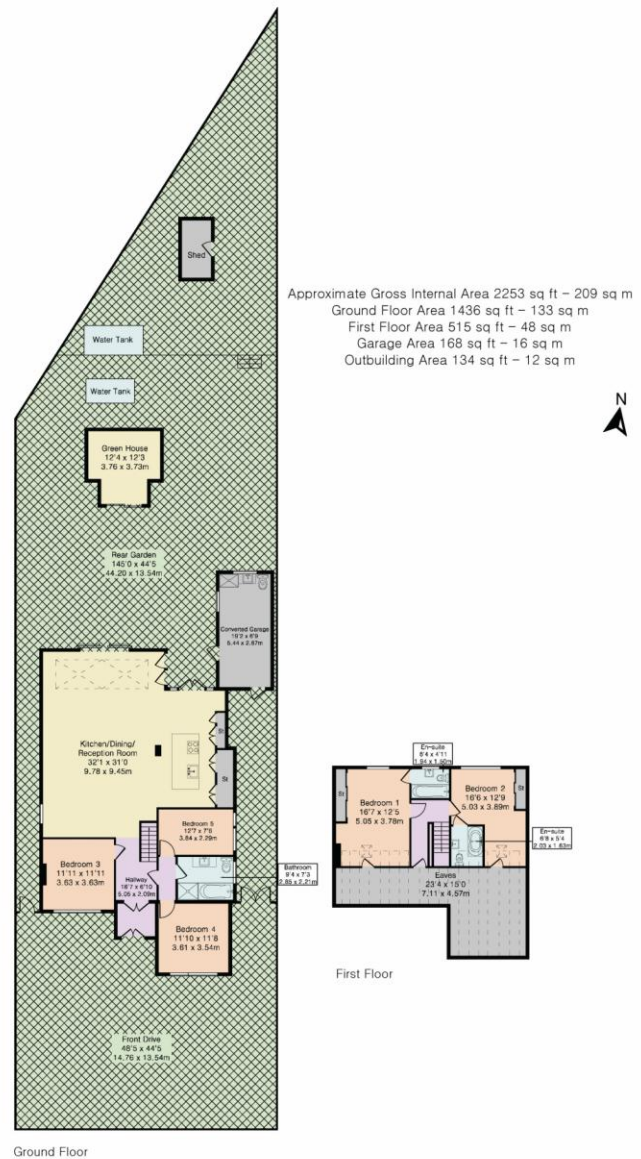












Although Pink Plan Ltd ensures the highest level of accuracy, measurements of doors, windows and rooms are approximate and no responsibility is taken for error, omission or misstatement. These plans are for representation purposes only as defined by RICS code of measuring practise. No guarantee is given on total square footage of the property within this plan. The figure icon is for initial guidance only and should not be relied on as a basis of valuation.



STATONS

www.statons.com



Council Tax - G
Local Authority – Enfield

**STATONS
BARNET**

1-2 Hadley Parade
0208 449 3383
barnet@statons.com

