



Hendon Wood Lane  
Mill Hill, London NW7

# Lee, Hendon Wood Lane, Mill Hill, London NW7

---

Lee is a beautifully renovated residence set on a highly desirable road between Mill Hill and Totteridge, offering modern styling within a characterful and welcoming home.

Approached via a generous driveway with ample parking, the house sits back from the road, creating a sense of privacy and calm while still being within easy reach of local amenities and excellent transport links.

The accommodation is thoughtfully arranged across three floors, with spacious living areas on the ground floor including a stylish kitchen, dining room, and a separate reception, complemented by a versatile study or additional bedroom. Upstairs, five further bedrooms provide flexible family living, with the top floor dedicated to an impressive principal suite, complete with ample storage and en-suite, creating a true retreat.

To the rear, the secluded garden is a standout feature — a private haven framed by mature planting and well-suited for outdoor dining and relaxation.

With greenbelt walks moments away, excellent schools nearby, and easy access to Mill Hill Broadway and Totteridge & Whetstone stations, Lee offers the perfect blend of modern family living and a tranquil North London lifestyle.





























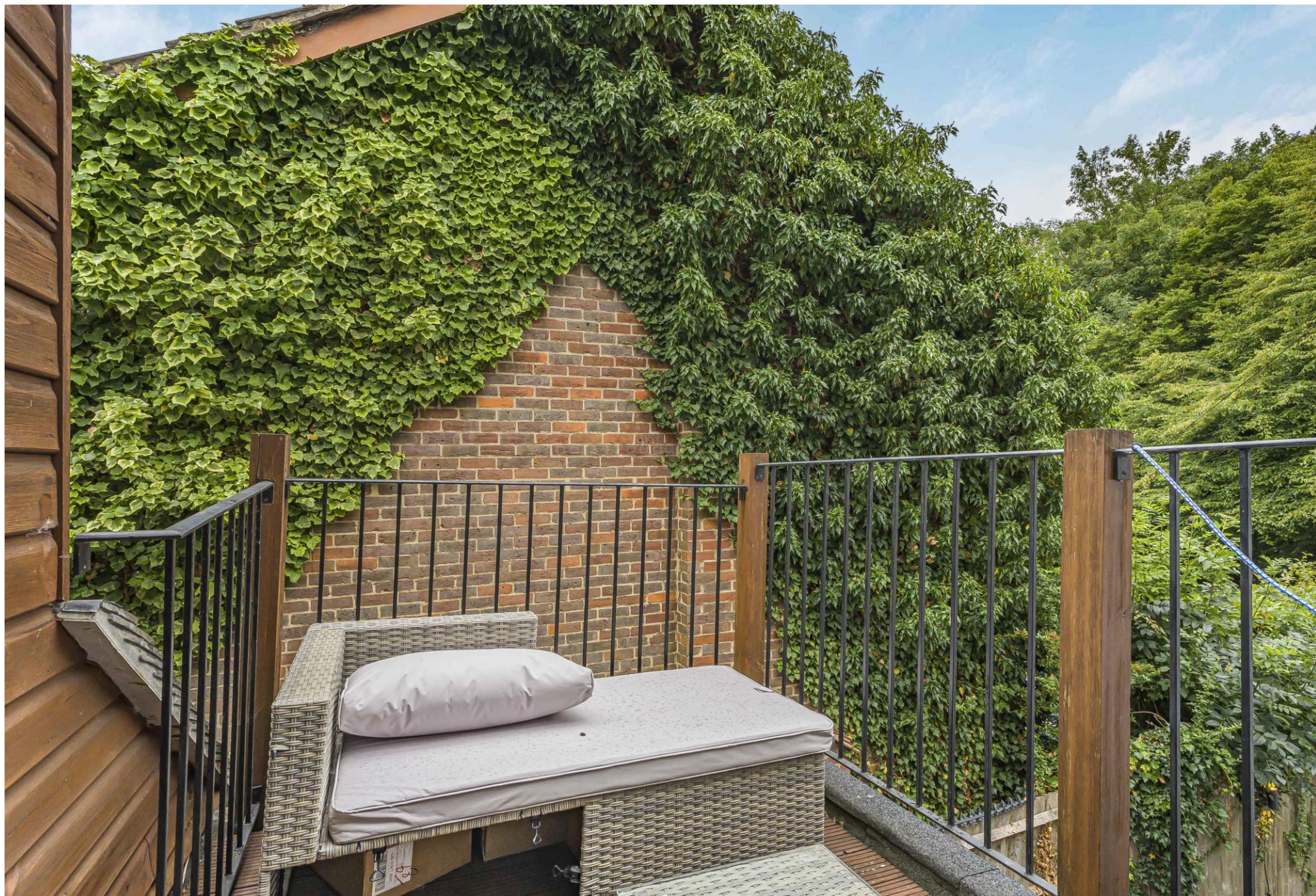












































Score	Energy rating	Current	Potential
92+	A		
81-91	B		
69-80	C	75 C	82 B
55-68	D		
39-54	E		
21-38	F		
1-20	G		

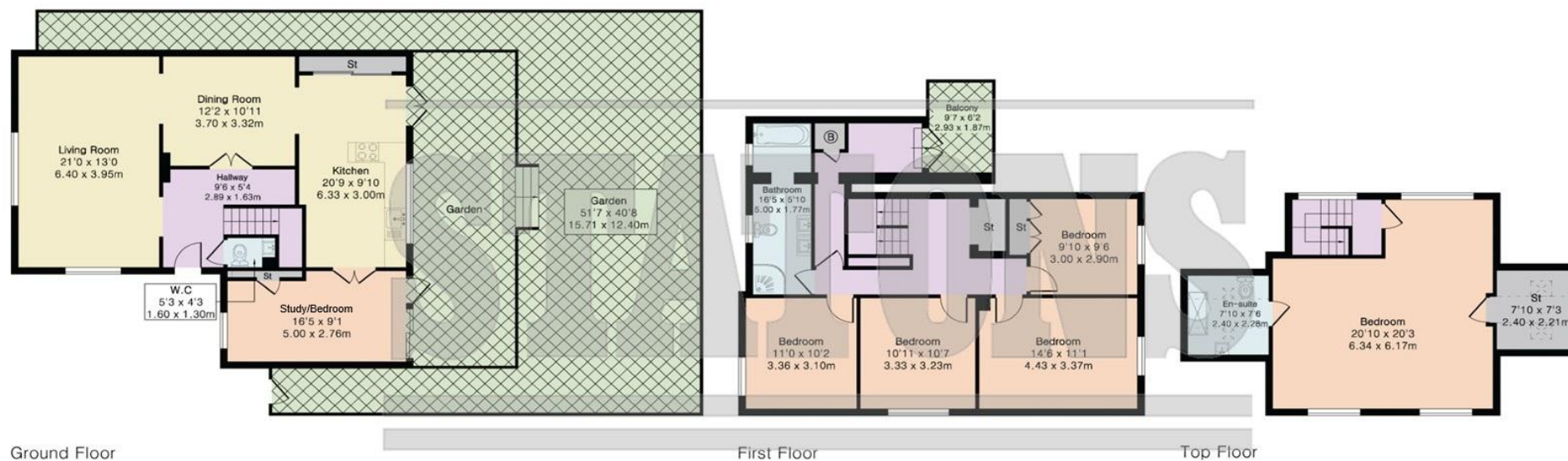
**Local Authority:**  
London Borough of  
Barnet  
**Council Tax Band: G**  
**FREEHOLD**

### Approximate Gross Internal Area 2275 sq ft - 211 sq m

Ground Floor Area 901 sq ft – 84 sq m

First Floor Area 842 sq ft – 78 sq m

Top Floor Area 532 sq ft – 49 sq m



**DISCLAIMER:** In accordance with the 1993 Misrepresentation Act the agent had not tested any apparatus, equipment, fixtures, fittings or services and so, cannot verify they are in working order, or fit for their purpose. Neither has the agent checked the legal documentation to verify the leasehold/freehold status of the property. The buyer is advised to obtain verification from their solicitor or surveyor. Also, photographs are for illustration only and may depict items which are not for sale or included in the sale of the property. All sizes are approximate. All dimensions include wardrobe spaces where applicable.



