

STATONS

www.statons.com

The Stables

Elstree, WD6



The Stables

Elstree, Hertfordshire, WD6 3FR - £8995 per month

The Stables are a development of seven homes with fantastic and uninterrupted views of the rolling hills of Elstree. The stunning views across the unspoilt fields create a sense of idyllic life, yet The Stables enviable location offers first-class connections both into London and Hertfordshire.

The property of offer is a detached five bedroom four bathroom, stable style home with a large entertaining basement with cinema and bar and gym.

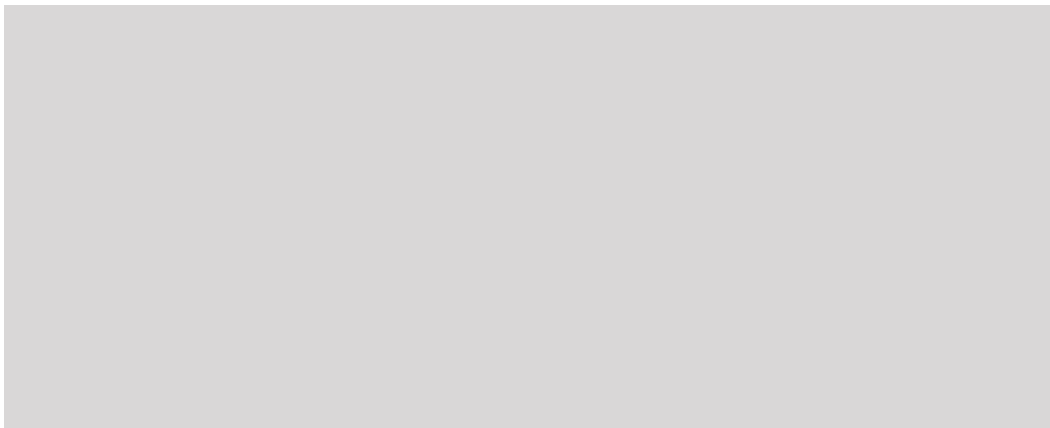
Council Tax Band H

Hertsmere Council

Deposit TBC

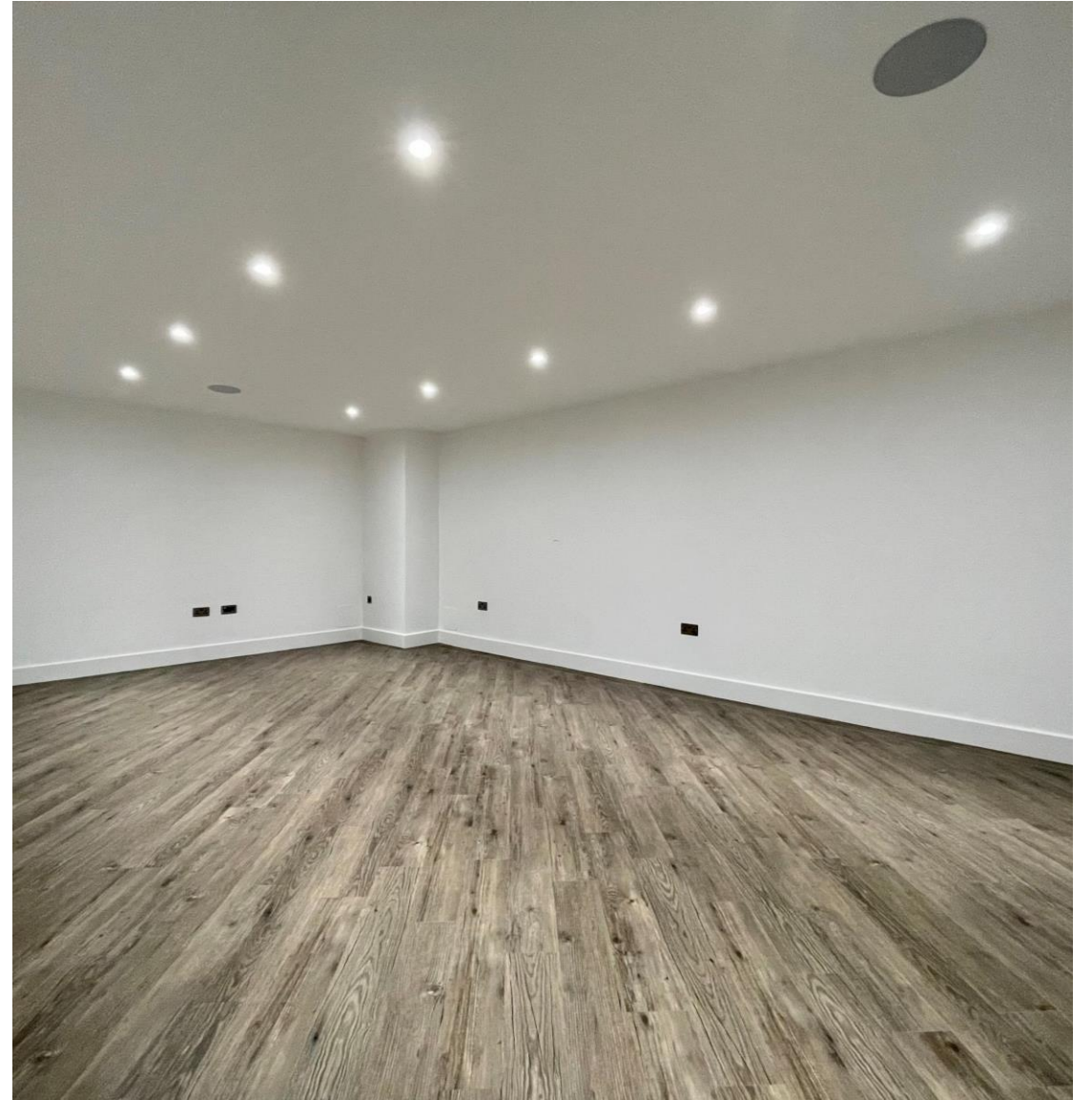






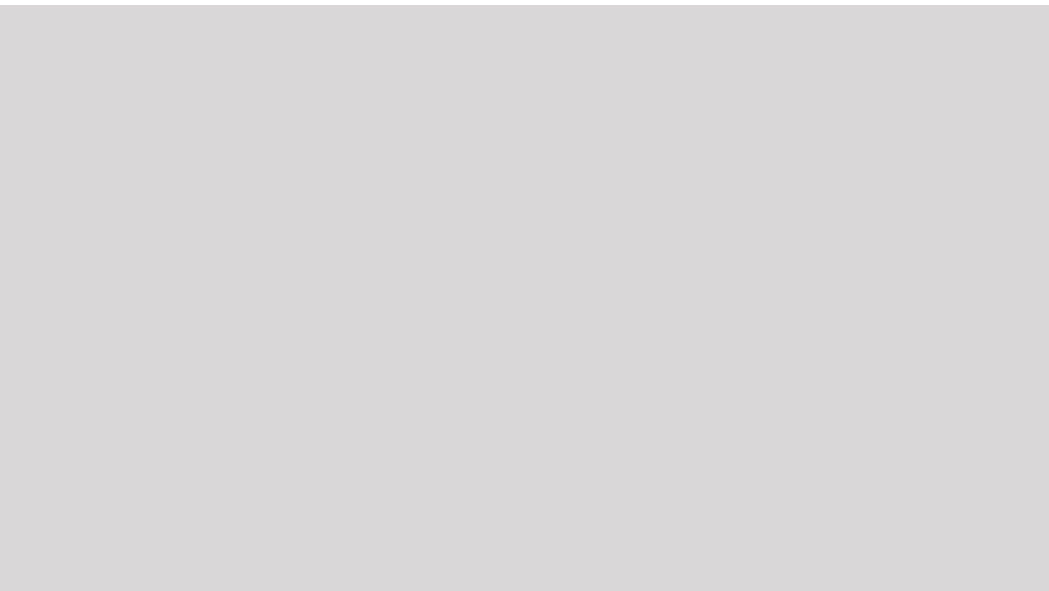











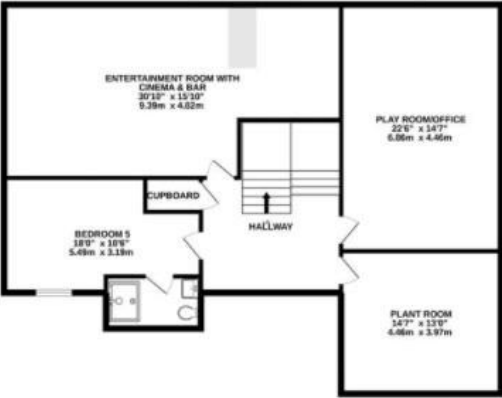




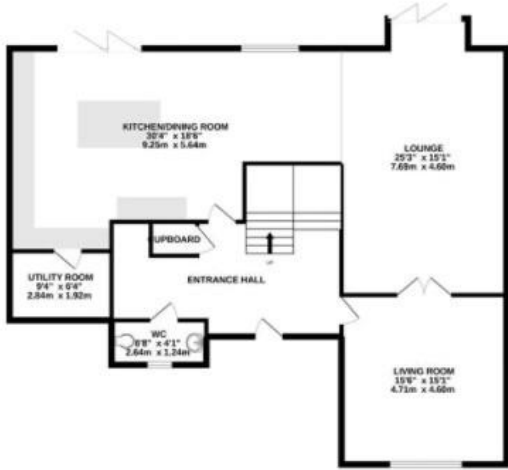


Energy Efficiency Rating		
	Current	Potential
Very energy efficient - lower running costs		
(92+) A	87	91
(81-91) B		
(69-80) C		
(55-68) D		
(39-54) E		
(21-38) F		
(1-20) G		
Not energy efficient - higher running costs		
England, Scotland & Wales	EU Directive 2002/91/EC	

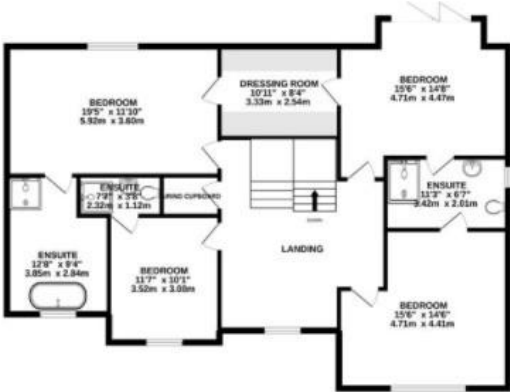
BASEMENT
1358 sq.ft. (126.2 sq.m.) approx.



GROUND FLOOR
1400 sq.ft. (130.0 sq.m.) approx.



1ST FLOOR
1291 sq.ft. (120.0 sq.m.) approx.



TOTAL FLOOR AREA : 4049 sq.ft. (376.2 sq.m.) approx.

Whilst every attempt has been made to ensure the accuracy of the floorplan contained here, measurements of doors, windows, rooms and any other items are approximate and no responsibility is taken for any error, omission or mis-statement. This plan is for illustrative purposes only and should be used as such by any prospective purchaser. The services, systems and appliances shown have not been tested and no guarantee as to their operability or efficiency can be given.
Made with Metrooix ©2022

STATONS

www.statons.com



STATONS PREMIER LETTINGS

1/2 Hadley Parade
Barnet
HERTS
EN5 5SX
020 8441 9796
lettings.office@statons.com