

12, Green Close
Brookmans Park, Hertfordshire, AL9 7ST
£461 Per week

STATONS

Tel: 0208 441 9796
Email: lettings@statons.com
Bedrooms 3 | Bathrooms 3 | Receptions 1





12, Green Close
Brookmans Park, Hertfordshire
AL9 7ST



AVAILABLE IMMEDIATELY.

The charming village of Brookmans Park in Hertfordshire is where you will find Brookmans, a delightful development of just sixteen luxuriously appointed 3/4 bedroom townhouses. With plenty to appeal to the discerning buyer, these three storey family homes feature the very best in modern building design and are beautifully finished inside and out.

Nestling in the very heart of the village, Brookmans is within easy reach of London by road or rail but still feels a world away from the bustle of the city centre. With a wealth of open spaces and countryside to enjoy right on the doorstep, here you can truly enjoy the best of town and country living.

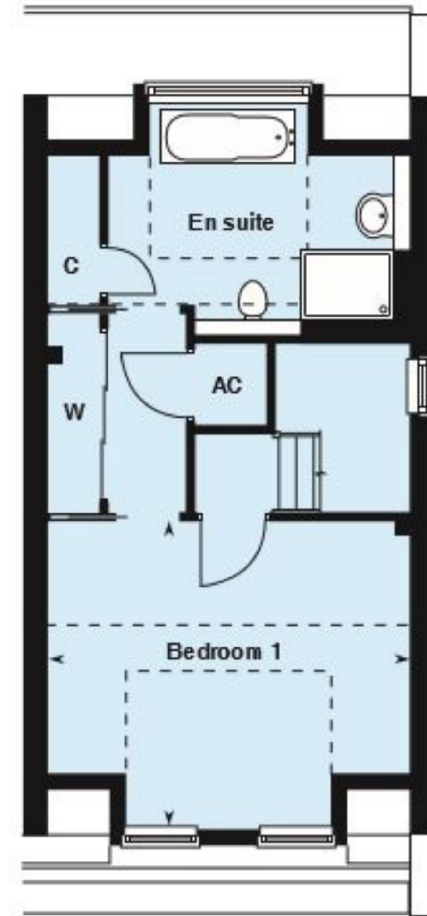
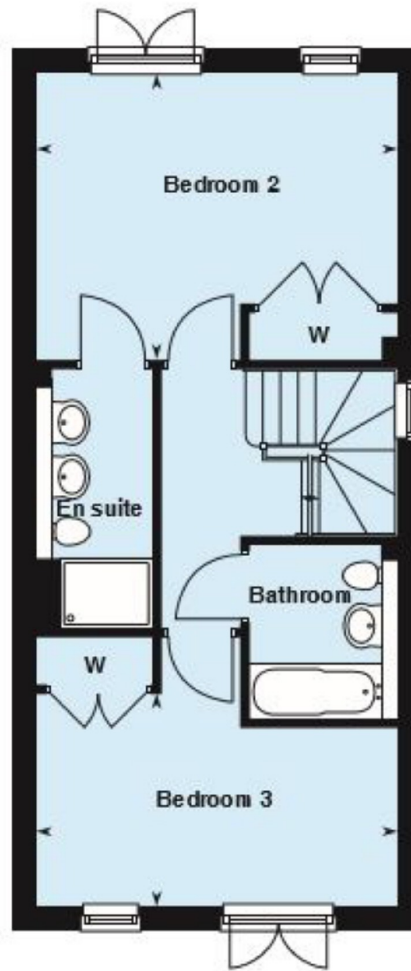
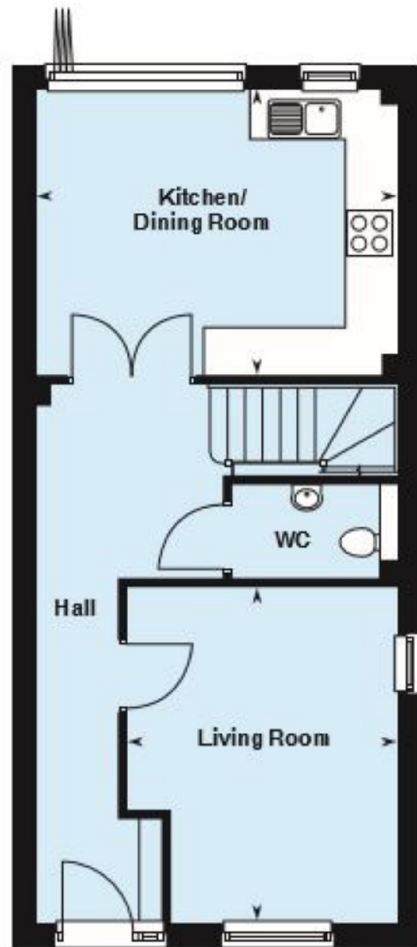
Brookmans Park has retained its village character through the years, and is surrounded on all sides by open countryside, which includes wild woodland, farm fields and the carefully kept greens of Brookmans Park golf course.

The larger towns of St Albans and Hatfield are within easy reach by road, and there are direct rail links to London from Brookmans Park station which is located adjacent to the development. It means that all of the world class culture, renowned shopping and entertainment of the capital are also yours to enjoy when the mood takes you.

Excellent connections are a key element in Brookmans Parks popularity. The railway station is just a few minutes walk from the development, and here you can catch direct trains to Moorgate in the City (37 minutes) or Finsbury Park for interchange with London Underground (23 minutes). London Kings Cross can be reached in just 34 minutes, by changing at Potters Bar. Other destinations include Hatfield (6 minutes), Stevenage (26 minutes), Cambridge (1 hour 14 minutes) and Peterborough (1 hour 25 minutes).

When you take to the road, the A1(M) is 3.4 miles from home. This is a direct route to the M25 at South Mimms, junction 23, which is 7.4 miles away or approximately 11 minutes drive. The A1(M) is of course also a direct route into London or to The North. With Luton airport less than 20 miles away by car and





DISCLAIMER:

In accordance with the 1993 Misrepresentation Act the agent had not tested any apparatus, equipment, fixtures, fittings or services and so, cannot verify they are in working order, or fit for their purpose. Neither has the agent checked the legal documentation to verify the leasehold/freehold status of the property. The buyer is advised to obtain verification from their solicitor or surveyor. Also, photographs are for illustration only and may depict items which are not for sale or included in the sale of the property. All sizes are approximate. All dimensions include wardrobe spaces where applicable.

BARNET

1-2 Hadley Parade
High Street
Barnet, Herts
EN5 5SX
Tel: 020 8449 3383
Fax: 020 8441 7676
barnet@statons.com

RADLETT

50 Watling Street
Radlett
Herts
WD7 7NN
Tel: 01923 604 321
Fax: 01923 859 182
radlett@statons.com

NEW HOMES SHOWCASE

204 High Street
Hadley Green
Barnet, Herts
EN5 5SX
Tel: 020 8441 9555
Fax: 020 8441 7976
newhomes@statons.com

HADLEY WOOD

10 Crescent West
Hadley Wood
Herts
EN4 0EJ
Tel: 020 8440 9797
Fax: 020 8440 8282
hadley@statons.com

TOTTERIDGE

28 - 30 Totteridge Lane
Totteridge
London
N20 9QJ
Tel: 020 8445 3694
Fax: 020 8445 3217
totteridge@statons.com

BROOKMANS PARK

53 Bradmore Green
Brookmans Park
Herts
AL9 7QS
Tel: 01707 661144
Fax: 01707 644111
brookmans@statons.com