



Northcote

The Ridgeway

Price On Application

Northcote, The Ridgeway NW7

Situated in the highly sought-after location off The Ridgeway in Mill Hill, Statons are pleased to offer for sale for the first time in 30 years Northcote, which is an extremely private and secluded residence set in 1 acre with exceptional views across open greenbelt countryside towards Totteridge valley, being unique to North London.

Northcote comprises 4,200 sq ft of expansive living which includes 5 bedrooms, 4 bathrooms, 3 reception rooms with a uniquely positioned mezzanine level ideal for a large work from home office space. The property sits on an acre of land, and benefits from a swimming pool, separate out-house which could be used as a pool house, horse stables, and twin terraces which provide you with a feeling of living on the Italian Riviera.

Upon entry to the house you are greeted with a large double height ceiling with glass top, creating an abundance of natural light which flows through the entire property. To the right is your main reception area with a mezzanine gallery. This reception room leads onto a stunning terrace, taking in the views across the large green spaces. On the same level you will find the principal bedroom with walk in wardrobe, en-suite and mezzanine office space, as well as direct access to the terrace.

On the garden level, you have 3 reception rooms, a further 4 bedrooms as well as the large kitchen breakfast room. The space is flexible in the lay out is ideal for both family living and entertaining on a grand scale.

To the rear of the property there is an expansive garden, swimming pool with pool house. This is a separate outbuilding which would make an ideal granny flat or gym. At the bottom of the garden there are unused horse stables.





240
SORRY I'M
NOT IN SERVICE













FARM FRESH

























Northcote, The Ridgeway, London, NW7

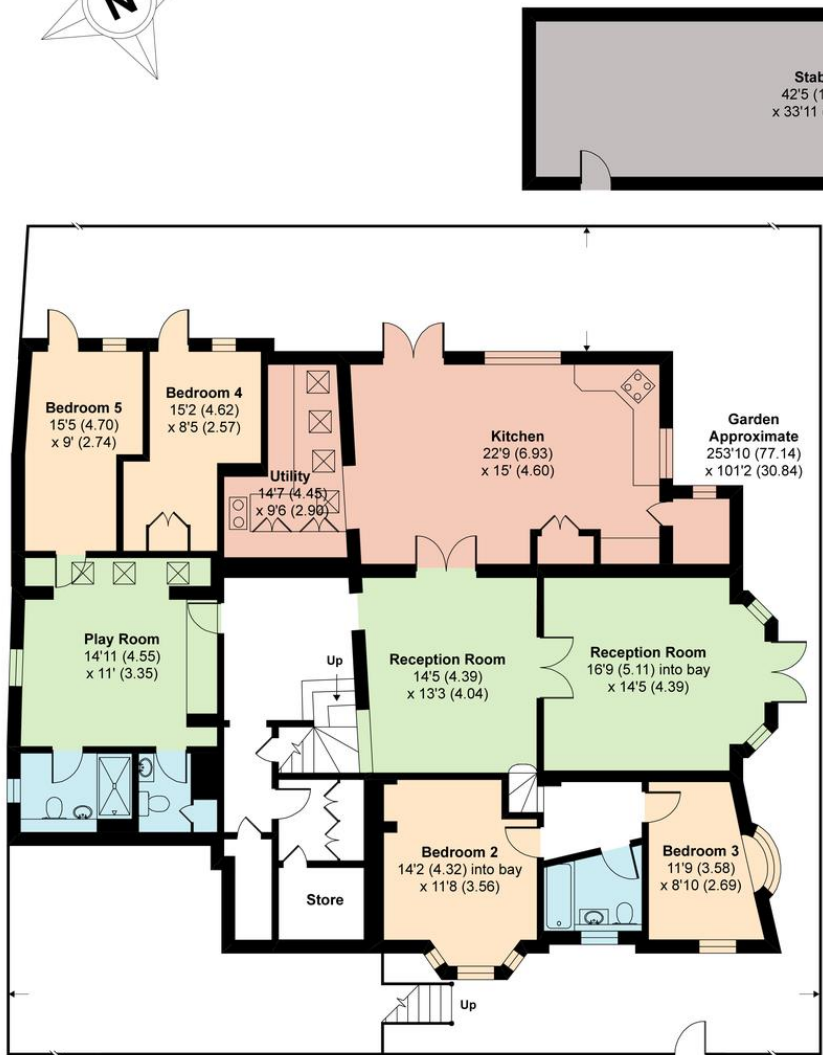
Approximate Area = 4208 sq ft / 390.9 sq m

Limited Use Area(s) = 16 sq ft / 1.5 sq m

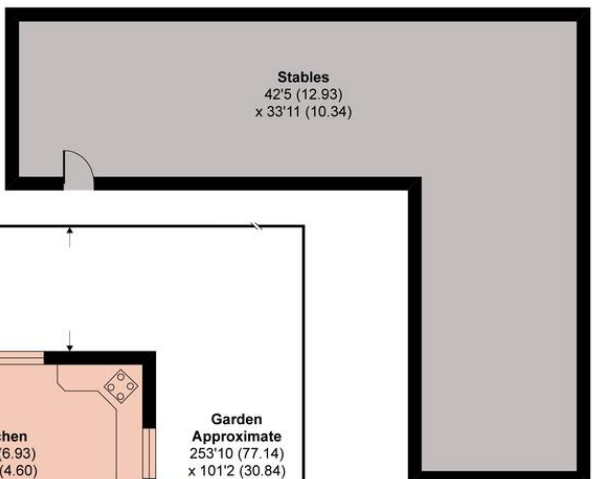
Outbuilding = 1079 sq ft / 100.2 sq m

Total = 5303 sq ft / 492.6 sq m

For identification only - Not to scale

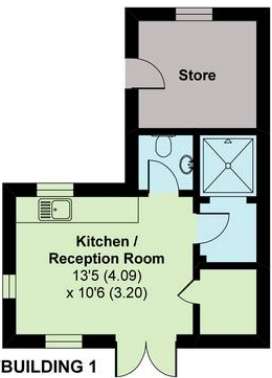


LOWER GROUND FLOOR



OUTBUILDING 2

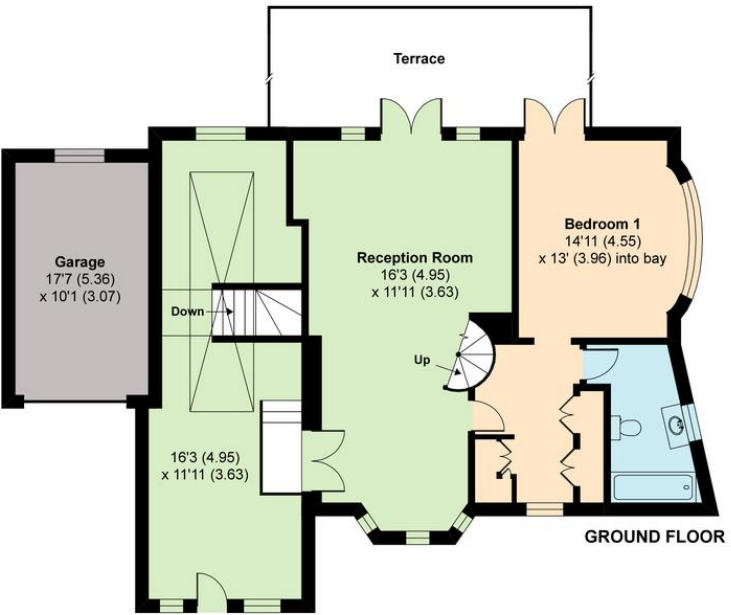
Denotes restricted head height



OUTBUILDING 1



FIRST FLOOR



GROUND FLOOR



Certified
Property
Measurer

Floor plan produced in accordance with RICS Property Measurement Standards incorporating International Property Measurement Standards (IPMS2 Residential). © n/checom 2020.
Produced for Statons REF: 673763

STATONS TOTTERIDGE

28-30 Totteridge Lane
Totteridge
London
N20 9QJ
020 8445 3694
totteridge@statons.com

