



Oak Tree Cottage

Totteridge N20

Oak Tree Cottage, Barnet Lane, N20

Discreetly located on a private and secluded corner setting is this deceptively bright and spacious cottage style character detached residence which has been well maintained and improved by the current owners.

On arrival you are greeted by a spacious reception hall entrance from which all principal rooms lead and include a guest cloakroom, a spacious 30' lounge/dining room which is divided by an open feature fireplace. There is a separate family/television room and a luxury fitted kitchen which opens onto the conservatory style breakfast room, which in turn opens directly onto the landscaped garden's. There is also a good size utility room.

A delightful turning staircase leads to the first floor landing which leads to the master bedroom suite, complete with dressing area and en suite bathroom. There are three further bedrooms, an en suite dressing room and two further bathrooms, one of which is en suite. The top level comprises of the fifth bedroom and fourth bathroom.

Externally, the house sits in spacious and secluded landscaped gardens, complete with a private patio and an irrigation system, and there is an attached garage and ample off street visitor parking. The house is also well protected by CCTV.

The property is ideally located within easy reach of Totteridge Village, complete with The Orange Tree public house. Whetstone high street with multiple shops and restaurants, Totteridge and Whetstone Underground Station, local schools, golf clubs and the A1M and M25.

































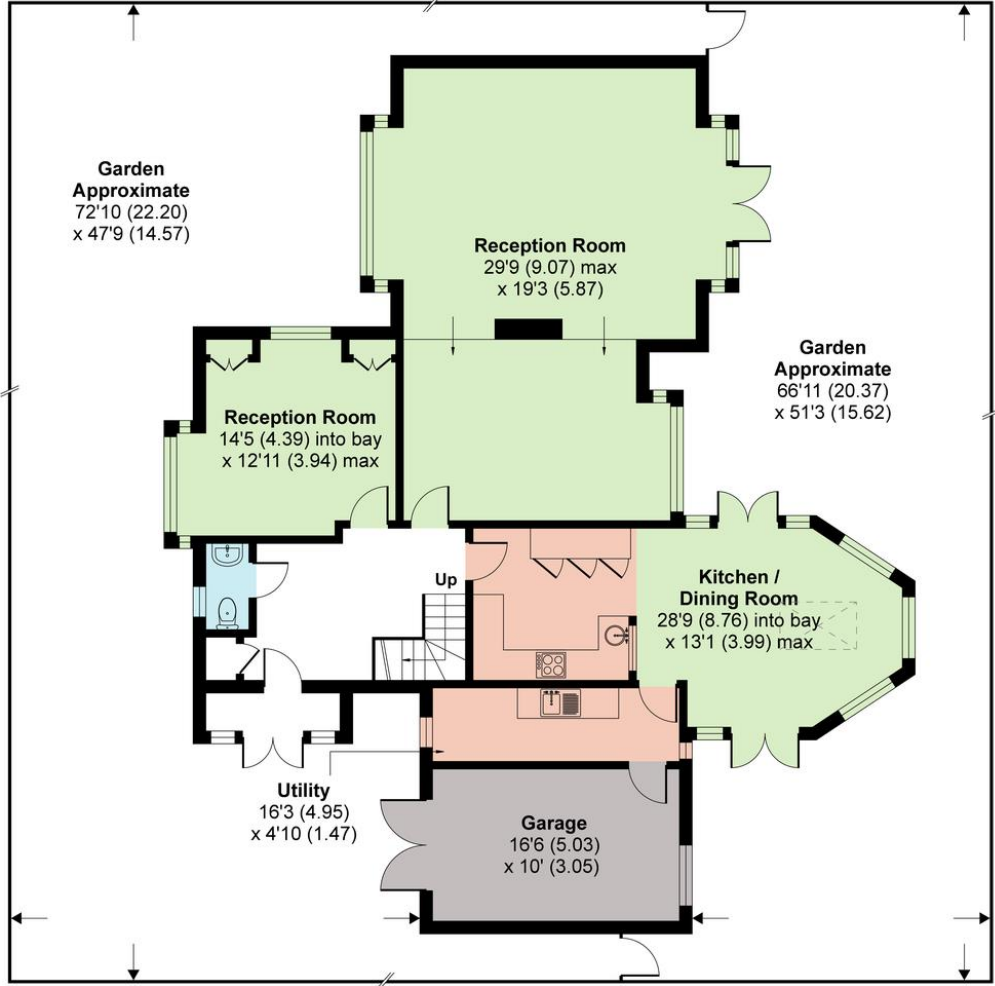


Barnet Lane, London, N20

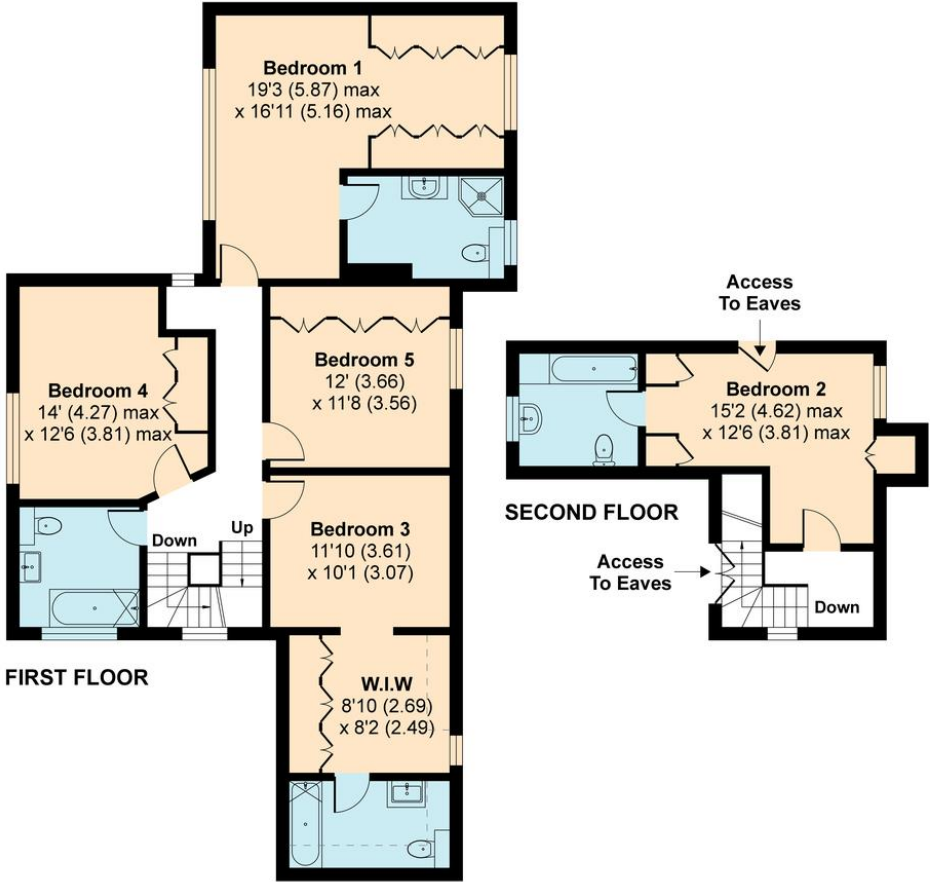
Approximate Area = 2757 sq ft / 256.1 sq m
 Limited Use Area(s) = 32 sq ft / 3 sq m
 Garage = 163 sq ft / 15.1 sq m
 Total = 2952 sq ft / 274.2 sq m

For identification only - Not to scale

Denotes restricted head height



GROUND FLOOR



FIRST FLOOR

SECOND FLOOR





STATONS

www.statons.com

STATONS

TOTTERIDGE

28-30 Totteridge Lane

Totteridge

London

N20 9QJ

020 8445 3694

totteridge@statons.com