

**STATONS**

[www.statons.com](http://www.statons.com)

# Antlia Court

Hadley Road



# The Churchwood, Antlia Court, 57 Hadley Road, EN2 8LA

This luxury three bedroom, two bathroom. second floor apartment has a private roof terrace with panoramic views of greenbelt and the London skyline. The apartment is approximately 1800 square foot and offers versatile and flexible living accommodation for either someone up scaling or downsizing. The is set behind electric gates with residents parking available and large communal gardens.

Council Tax Band G

Enfield Council

1 Weeks rent holding deposit.

6 weeks rent as security deposit

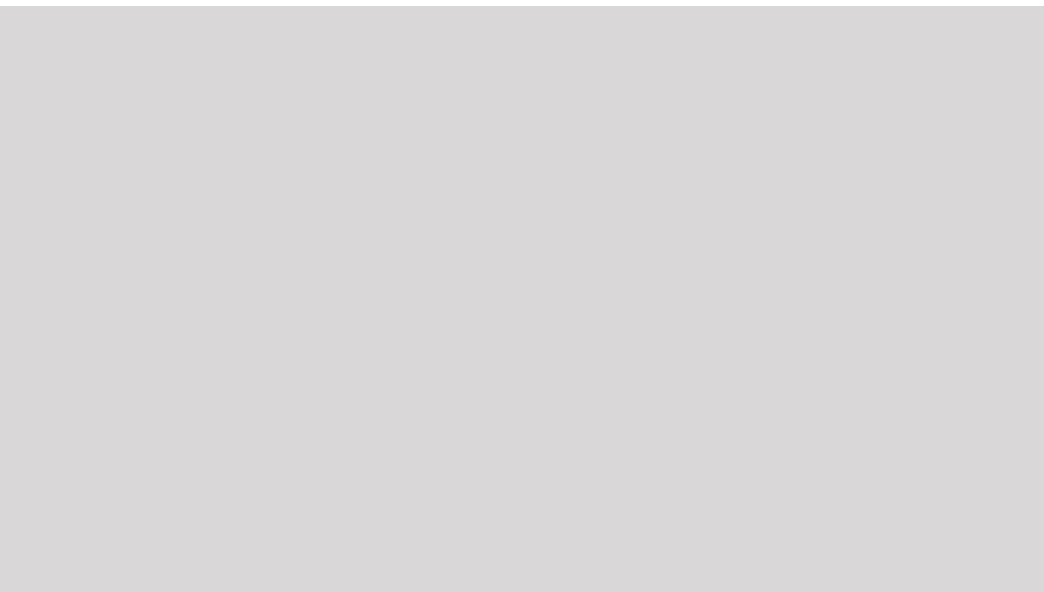


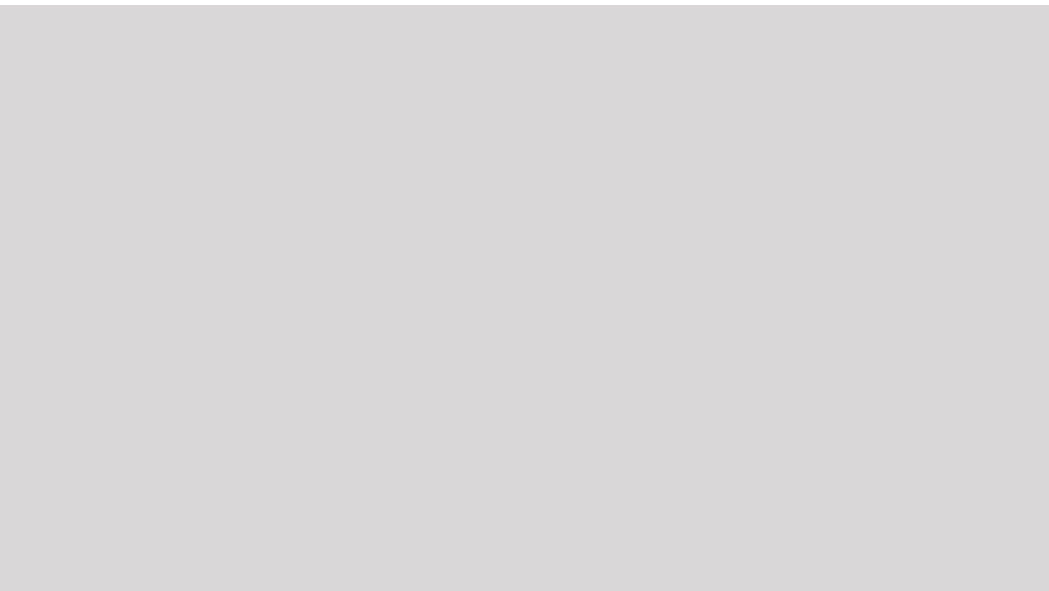
















Energy Efficiency Rating		
	Current	Potential
Very energy efficient - lower running costs		
(92+) <b>A</b>		
(81-91) <b>B</b>	83	83
(69-80) <b>C</b>		
(55-68) <b>D</b>		
(39-54) <b>E</b>		
(21-38) <b>F</b>		
(1-20) <b>G</b>		
Not energy efficient - higher running costs		
England, Scotland & Wales	EU Directive 2002/91/EC	



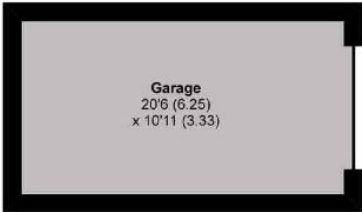
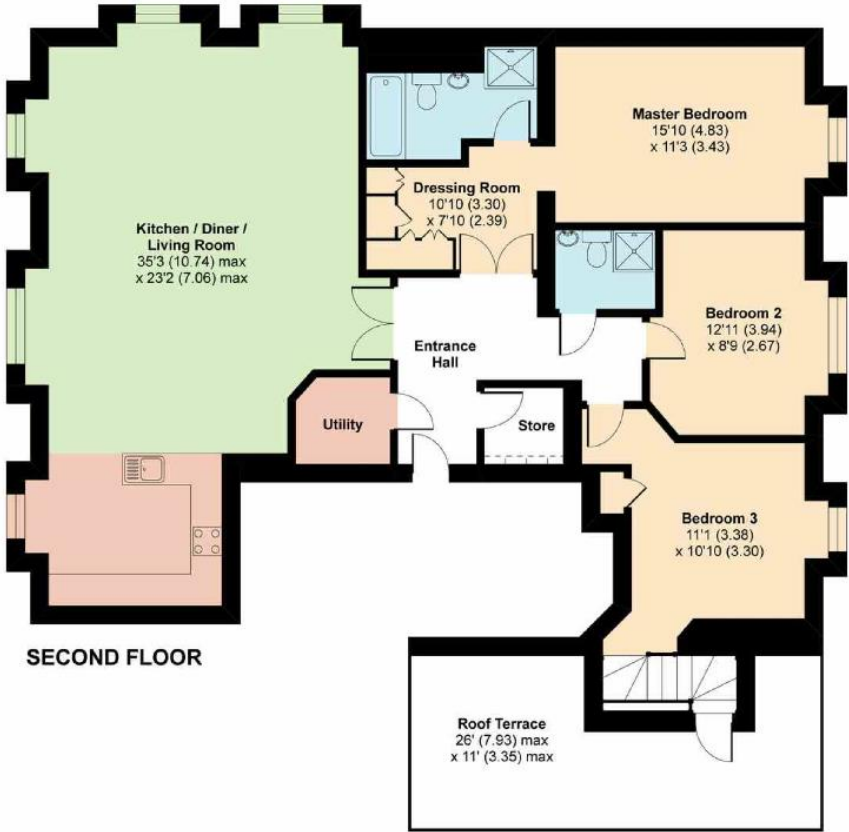
Certified  
Property  
Measurer

Floor plan produced in accordance with RICS Property Measurement Standards incorporating International Property Measurement Standards (IPMS2 Residential). © n/checom 2020.  
Produced for Statons. REF: 613404

Hadley Road, EN2

Approximate Area = 1581 sq ft / 146.9 sq m  
Limited Use Area(s) = 2 sq ft / 0.2 sq m  
Garage = 225 sq ft / 20.9 sq m  
Total = 1808 sq ft / 168 sq m  
For identification only - Not to scale

Denotes restricted  
head height





# **STATONS**

[www.statons.com](http://www.statons.com)

## **STATONS PREMIER LETTINGS**

1/2 Hadley Parade  
Barnet  
HERTS  
EN5 5SX  
020 8441 9796  
[lettings.office@statons.com](mailto:lettings.office@statons.com)

