

**STATONS**



# Whetstone Square

Penthouse Apartment



Penthouse  
1066 High Road  
Whetstone Square  
N20 0FS

SOLE AGENTS... This exclusive gated development is home to this stunning one bedroom penthouse apartment. Located in N20, the property boasts superb transport links to central London as well as local amenities and picturesque parks. Allocated parking, lift acces, communal gardens and walking distance to Totteridge & Whetstone underground station.

Coucil Tax Band D  
Barnet Council  
5 Weeks deposit.









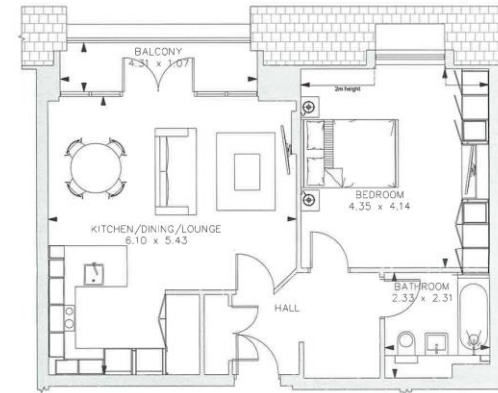
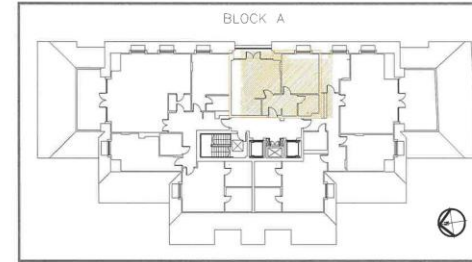






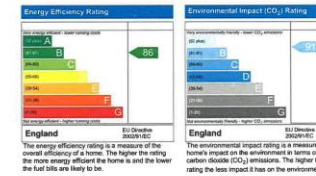






FLAT 28 - 60.99m<sup>2</sup>

Kitchen/Dining/Lounge 6.10 x 5.43m 20' 0" x 17' 10"  
 Bedroom 4.35 x 4.14m 14' 3" x 13' 7"  
 Bathroom 2.33 x 2.31m 7' 8" x 7' 7"  
 Amenity Space  
 Balcony 4.31 x 1.07m 14' 2" x 3' 6"



Consumers should note that this illustration is an example of the house type. All dimensions indicated are approximate and furniture layout is for illustrative purposes only. Buyers may see handed versions of the illustration. Samples, items and specifications are available for inspection to each plot at our Sales Centre during marketing and customers must check their individual specifications prior to making a reservation.

Energy Efficiency Rating		Current	Potential
Very energy efficient - lower running costs			
(92+)	A		
(81-91)	B	86	86
(69-80)	C		
(55-68)	D		
(39-54)	E		
(21-38)	F		
(1-20)	G		
Not energy efficient - higher running costs			
England, Scotland & Wales		EU Directive 2002/91/EC	

**DISCLAIMER:** In accordance with the 1993 Misrepresentation Act the agent had not tested any apparatus, equipment, fixtures, fittings or services and so, cannot verify they are in working order, or fit for their purpose. Neither has the agent checked the legal documentation to verify the leasehold/freehold status of the property. The buyer is advised to obtain verification from their solicitor or surveyor. Also, photographs are for illustration only and may depict items which are not for sale or included in the sale of the property. All size are approximate. All dimensions include wardrobe spaces where applicable.

# STATONS

## STATONS PREMIER LETTINGS

1 HADLEY PARADE  
BARNET  
HERTS  
EN5 5SX

[lettings.office@statons.com](mailto:lettings.office@statons.com)  
020 8441 9796

