



Cannon Hill  
London, N14

































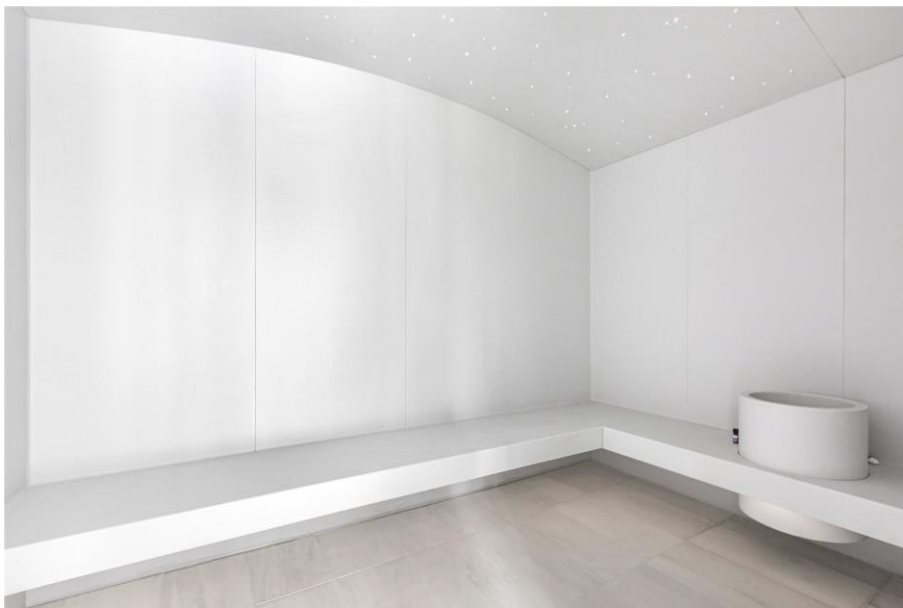












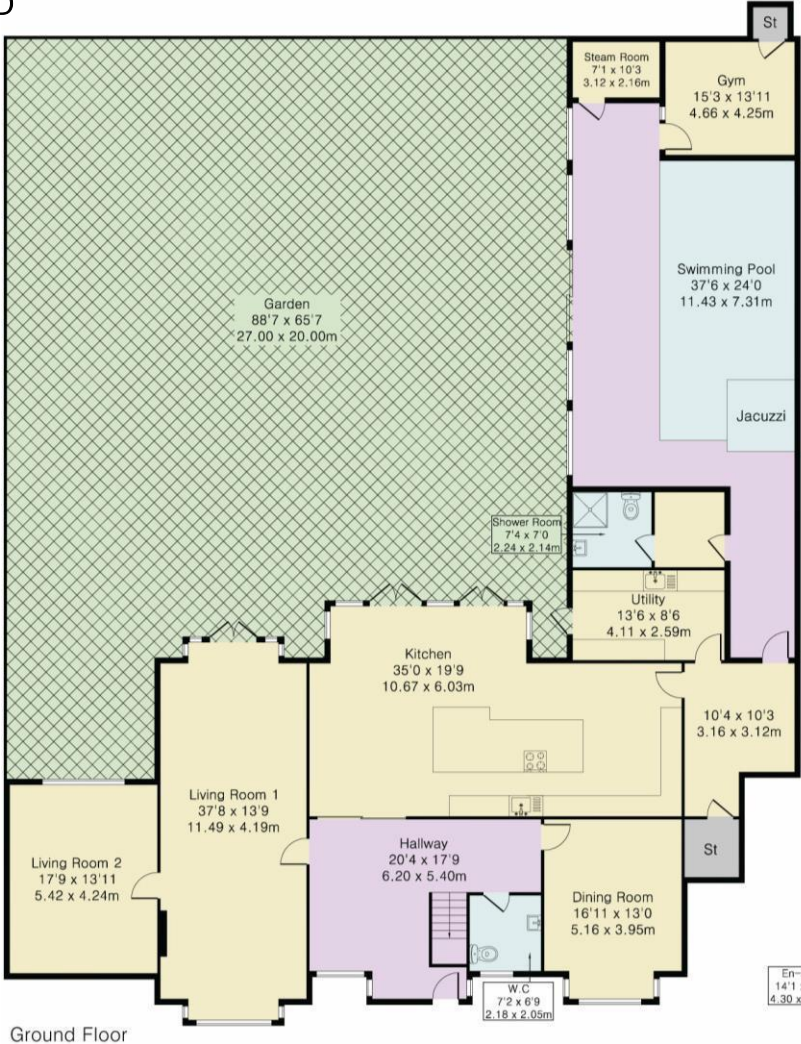




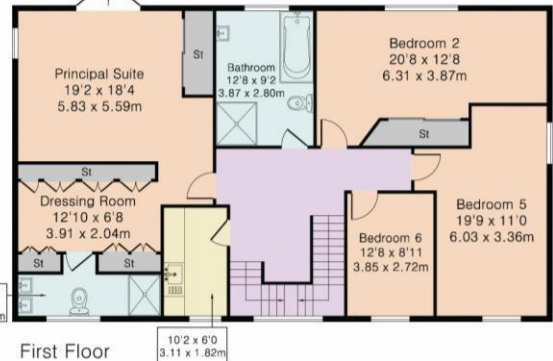
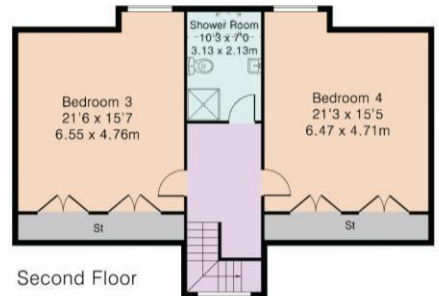








Approximate Gross Internal Area 5532 sq ft – 515 sq m  
Ground Floor Area 3280 sq ft – 305 sq m  
First Floor Area 1427 sq ft – 133 sq m  
Second Floor Area 825 sq ft – 77 sq m



Energy Efficiency Rating		
	Current	Potential
Very energy efficient - lower running costs		
(92+) <b>A</b>		
(81-91) <b>B</b>		
(69-80) <b>C</b>	77	79
(55-68) <b>D</b>		
(39-54) <b>E</b>		
(21-38) <b>F</b>		
(1-20) <b>G</b>		
Not energy efficient - higher running costs		
England, Scotland & Wales	EU Directive 2002/91/EC	



Although Pink Plan Ltd ensures the highest level of accuracy, measurements of doors, windows and rooms are approximate and no responsibility is taken for error, omission or misstatement. These plans are for representation purposes only as defined by RICS code of measuring practise. No guarantee is given on total square footage of the property within this plan. The figure icon is for initial guidance only and should not be relied on as a basis of valuation.





STATONS  
HADLEY WOOD

10 Crescent West, Hadley Wood,  
Herts, EN4 0EJ

Tel: 0208 440 9797

Email: [hadley@statons.com](mailto:hadley@statons.com)

**STATONS**  
[www.statons.com](http://www.statons.com)