

The logo for STATONS, featuring the word in a bold, black, sans-serif font on a yellow rectangular background with horizontal lines above and below the text.

STATONS

A photograph of a modern mews house with a stone wall and a large glass door leading to a bright interior. The patio is paved with grey tiles and has a wooden fence on the right side.

Mews House

Nursery Row



6 Nursery Row
Barnet
Hertfordshire
EN5 4JY

A BRAND NEW 2 BEDROOM MEWS HOUSE.

Entering through the traditional front door to the hallway and into the large, bright through room with living, dining and kitchen areas, limed oak floors and bi-fold doors to the newly-flagged patio garden, two double bedrooms, a bathroom, and a downstairs WC. cleverly placed skylights bring the light flooding in throughout the property.

Located in Nursery Row just off the High Street close to boutique shops, coffee shops, restaurants and within walking distance of High Barnet (Northern Line) underground station and The Spires shopping centre.




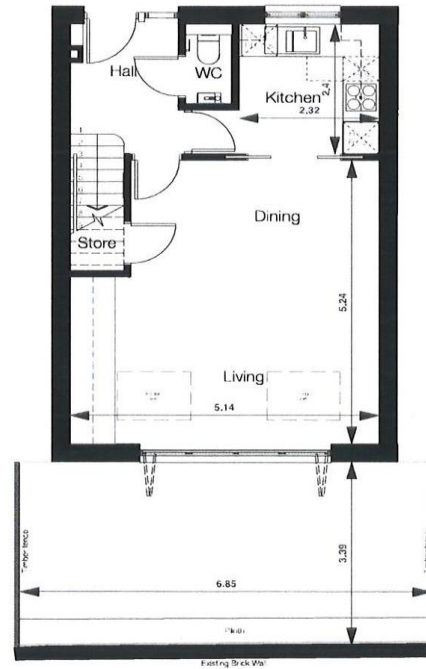




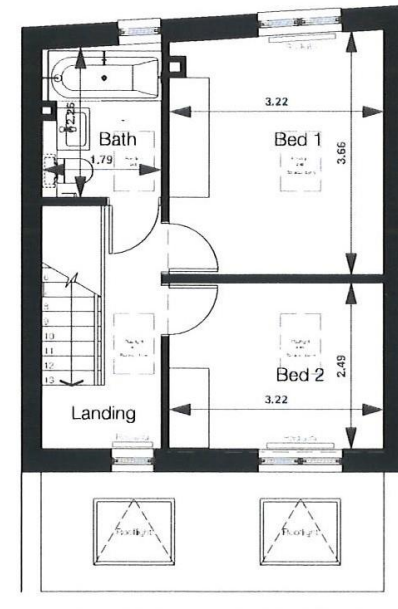




Energy Efficiency Rating		
	Current	Potential
Very energy efficient - lower running costs		
(92+) A		97
(81-91) B	84	
(69-80) C		
(55-68) D		
(39-54) E		
(21-38) F		
(1-20) G		
Not energy efficient - higher running costs		
England, Scotland & Wales	EU Directive 2002/91/EC	



Ground Floor Plan



1st Floor Plan

DISCLAIMER: In accordance with the 1993 Misrepresentation Act the agent had not tested any apparatus, equipment, fixtures, fittings or services and so, cannot verify they are in working order, or fit for their purpose. Neither has the agent checked the legal documentation to verify the leasehold/freehold status of the property. The buyer is advised to obtain verification from their solicitor or surveyor. Also, photographs are for illustration only and may depict items which are not for sale or included in the sale of the property. All size are approximate. All dimensions include wardrobe spaces where applicable.

STATONS

STATONS PREMIER LETTINGS

1 HADLEY PARADE
BARNET
HERTS
EN5 5SX

020 8441 9796

