

STATONS

www.statons.com



Beech Hill

Hadley Wood

Beech Hill

Hadley Wood, Hertfordshire, EN4 0JP

Magnificent, secluded seven bedroom, new build mansion residence, set behind gates on Hadley Woods premier road, Beech Hill. Oakdale has been completed to an extremely high specification and boasts an indoor leisure complex complete with Swimming Pool, Sauna & shower.

Enfield Council

Band H

Deposit TBC



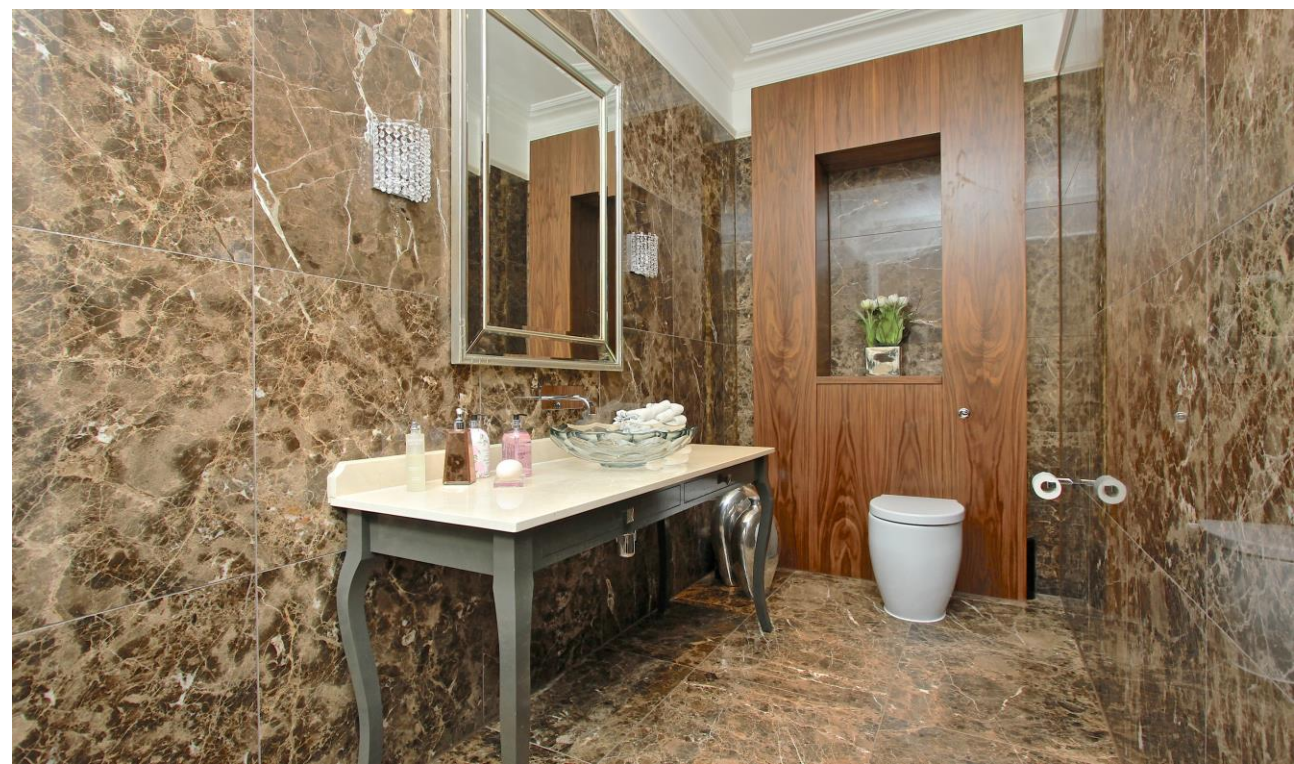
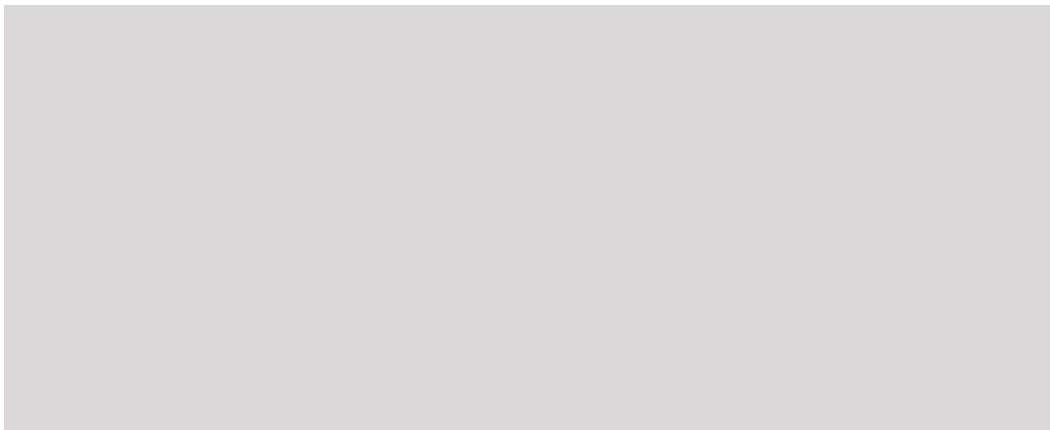











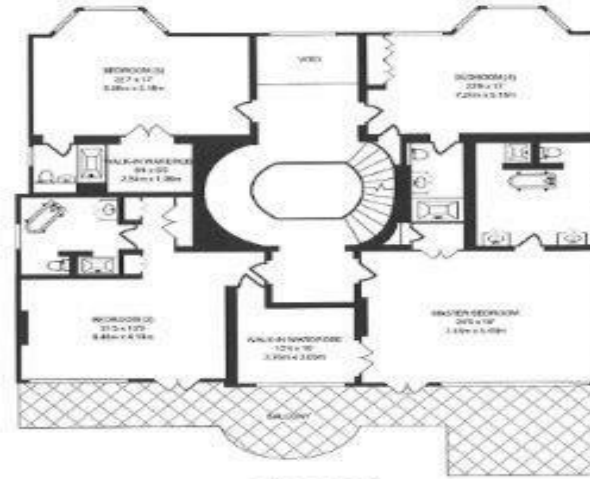




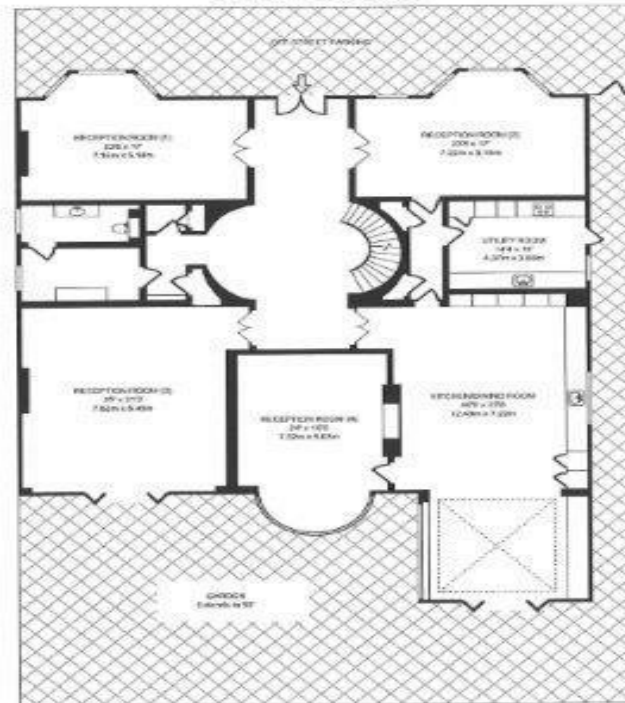


Energy Efficiency Rating

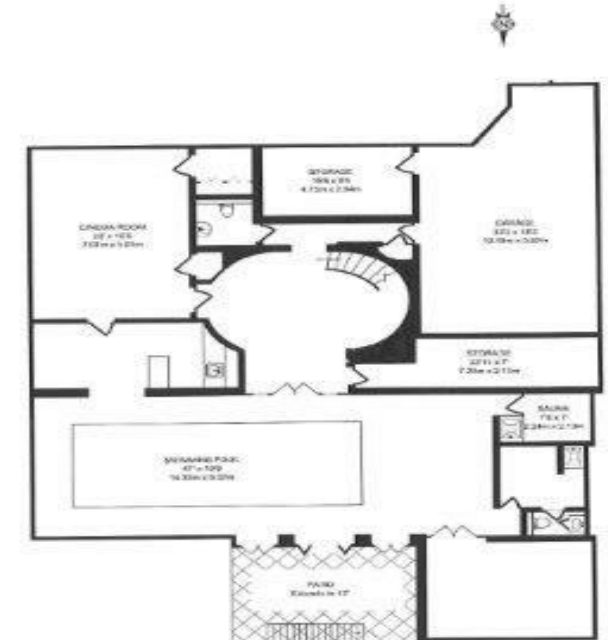
	Current	Potential
Very energy efficient - lower running costs		
(92+) A		
(81-91) B	82	84
(69-80) C		
(55-68) D		
(39-54) E		
(21-38) F		
(1-20) G		
Not energy efficient - higher running costs		
England, Scotland & Wales	EU Directive 2002/91/EC	



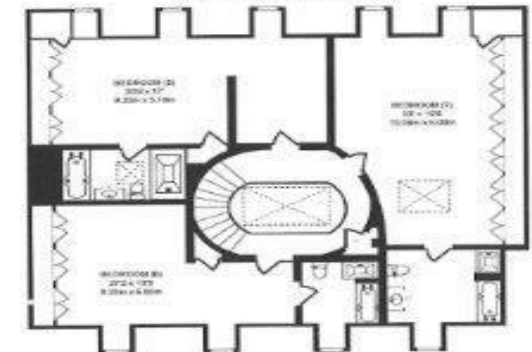
FIRST FLOOR
2,818 SQ FT/261.93 SQ M



GROUND FLOOR
3,432 SQ FT/319.01 SQ M



LOWER GROUND FLOOR
3,374 SQ FT/313.62 SQ M



SECOND FLOOR
2,097 SQ FT/194.92 SQ M

Representation of current layout, floor area approx 11,721 Sq Ft (1,088 Sq M)

STATONS

www.statons.com



STATONS PREMIER LETTINGS

1/2 Hadley Parade
Barnet
HERTS
EN5 5SX
020 8441 9796
lettings.office@statons.com