

Harrison Close, London, N20 9JX

**STATONS**  
www.statons.com



A 4-bedroom detached family home situated in a private gated close off Oakleigh Park South.

Downstairs comprises a large open plan kitchen /living space, 2 spacious bedrooms, an office, family bathroom and a guest w/c. Access to both the garden & patio area can be found on either side of the house. The principle bedroom, along with bedroom 2 are located on the first floor, both of which have en suite bathrooms.

The lower ground floor benefits from multiple storage areas and internal access to the garage. Further benefits include a utility room, ample storage throughout and off-street parking.

























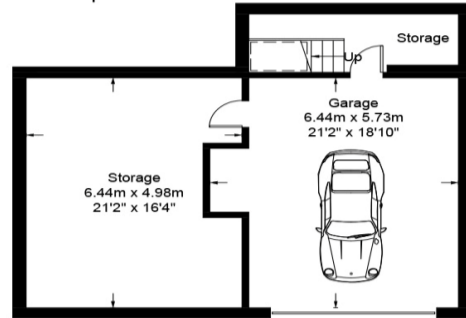
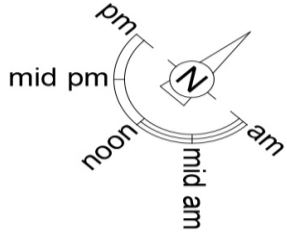




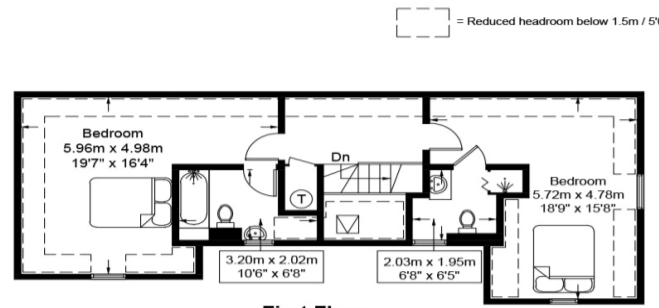
# Harrison Close, N20

Approximate Gross Internal Area = 3033 sq ft / 281.8 sq m

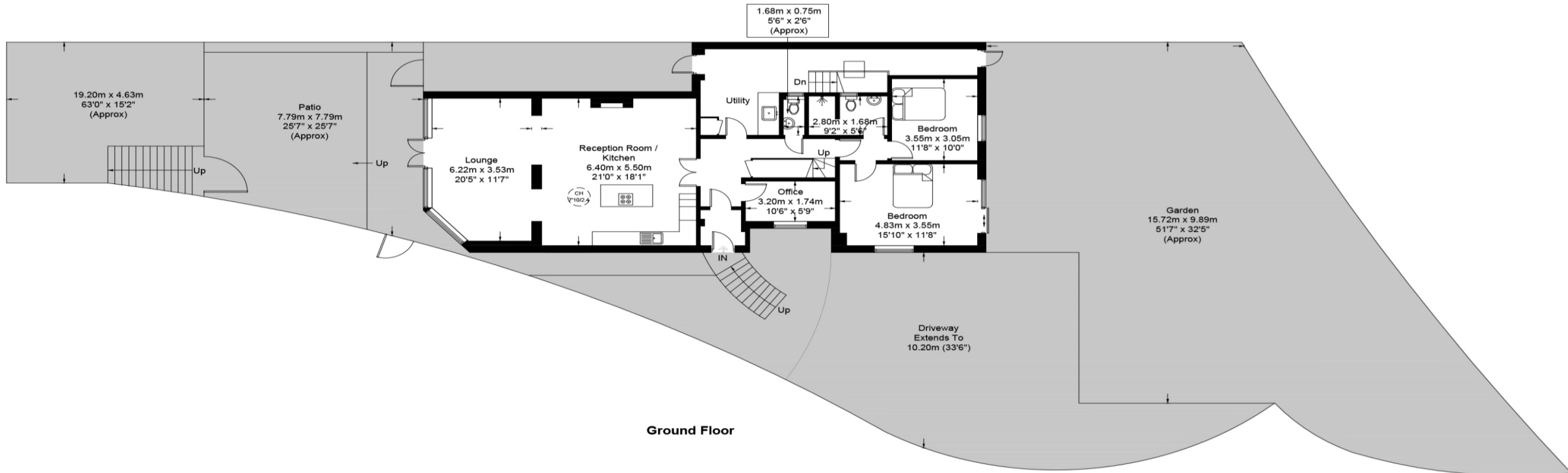
Restricted Height = 212 sq ft / 19.7 sq m



Lower Ground Floor



First Floor



Ground Floor

This plan is for layout guidance only and is not drawn to scale unless stated. All dimensions, including windows, doors, and the Total Gross Internal Area (GIA), are approximate. For precise measurements, please consult a qualified architect or surveyor before making any decisions based on this plan.



# STATONS

www.statons.com



Energy Efficiency Rating		Current	Potential
Very energy efficient - lower running costs			
(92+)	A		
(81-91)	B		
(69-80)	C		
(55-68)	D	65	71
(39-54)	E		
(21-38)	F		
(1-20)	G		
Not energy efficient - higher running costs			
England, Scotland & Wales		EU Directive 2002/91/EC	

Council Tax - Band G  
Local Authority - Barnet

**STATONS**  
**TOTTERDIGE**

28-30 Totteridge Lane,  
London, N20 9QJ  
020 8445 3694  
totteridge@statons.com

