

STATONS

www.statons.com

Warner Close

Hadley Wood, EN4



Warner Close Hadley Wood, Hertfordshire, EN4 0HE

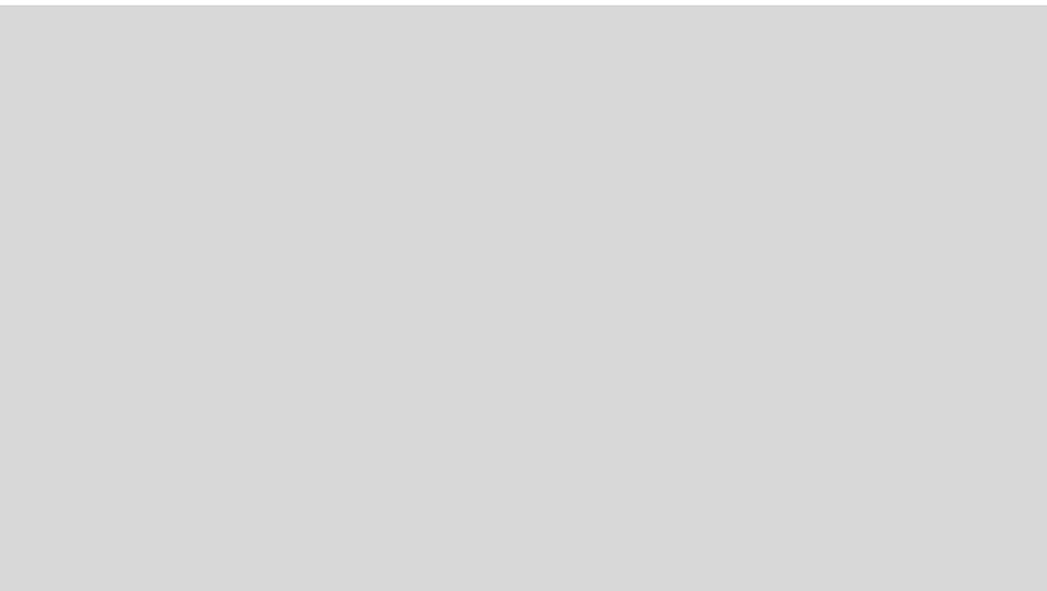
- 6 Bedroom
- 4 Reception
- 5 Bathroom
- 4348 Square Foot
- Set behind Electric Gates
- Gymnasium
- Spread over 3 floors
- Cinema Room
- Double Garage

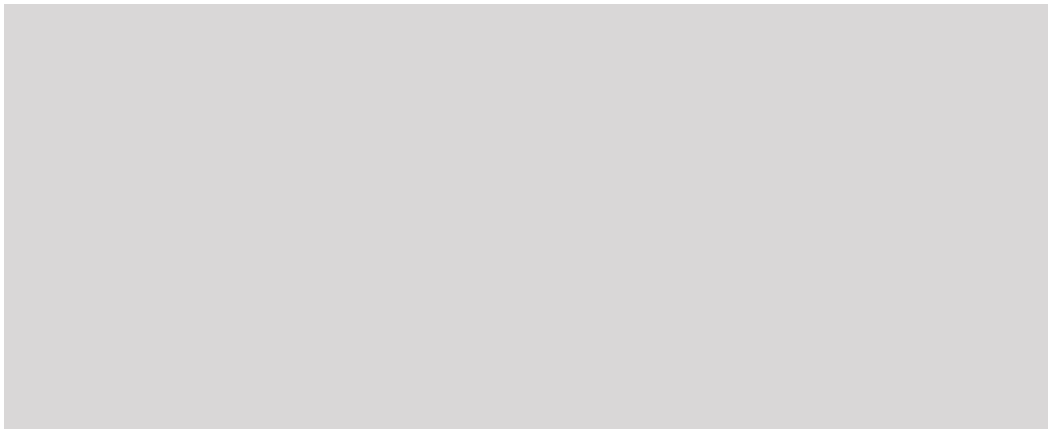
Local authority: Enfield Council

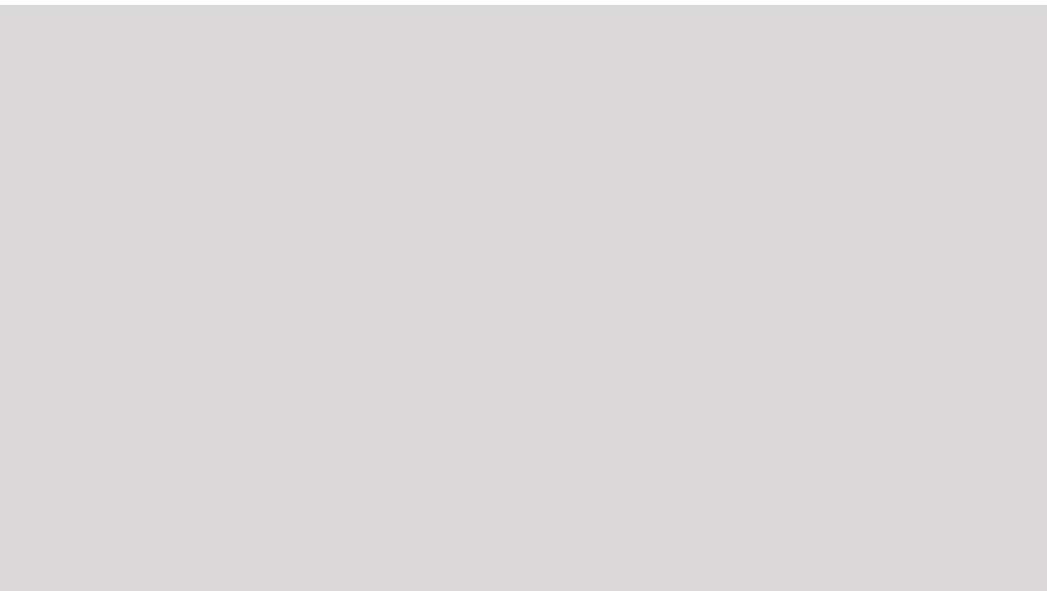
Council tax band: H









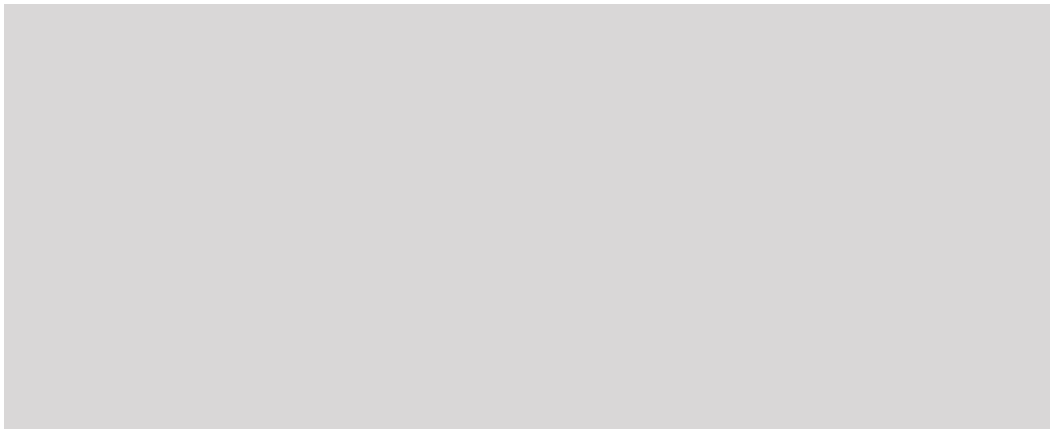


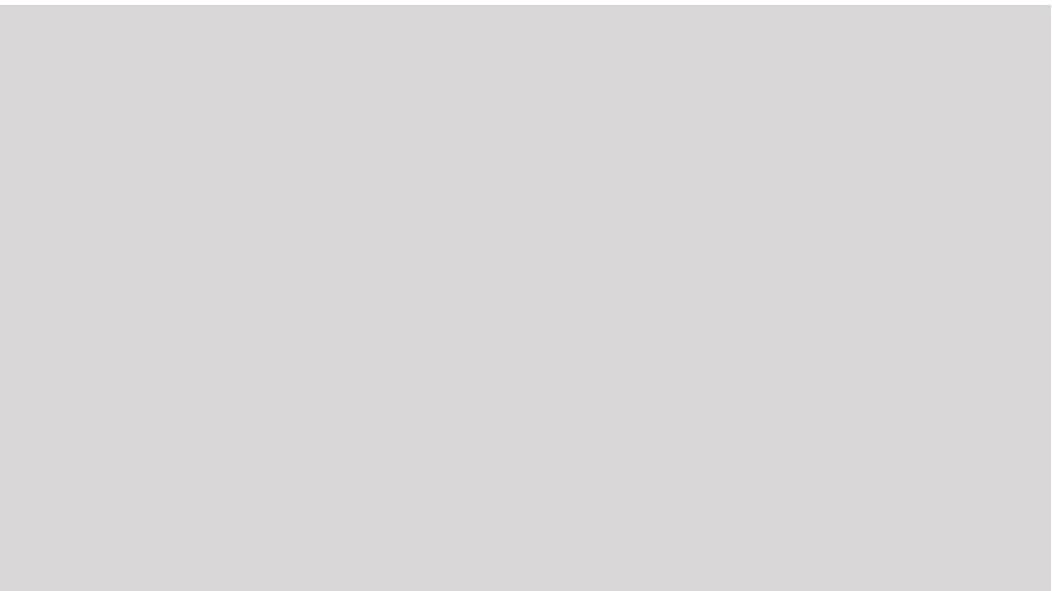









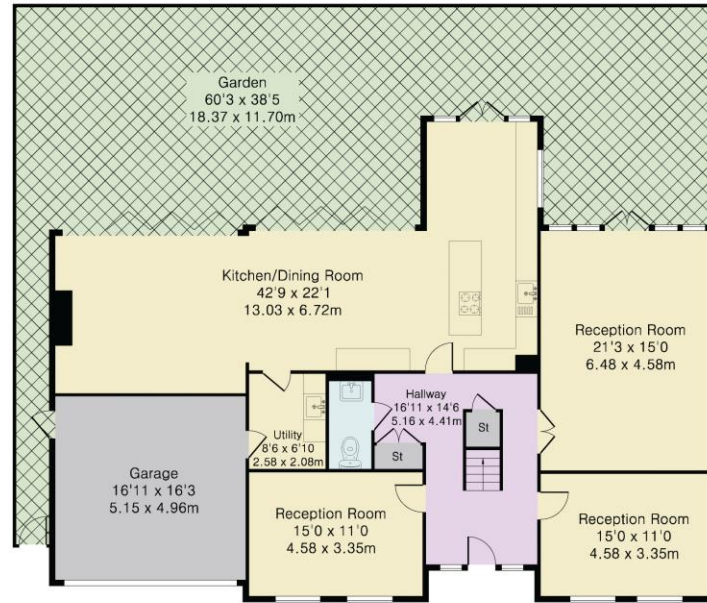






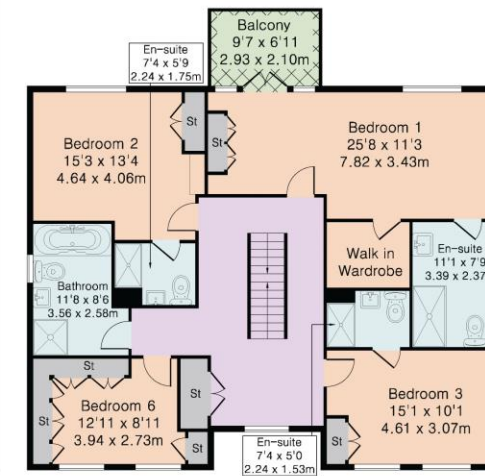


Energy Efficiency Rating		Current	Potential
Very energy efficient - lower running costs			
(92+)	A	72	76
(81-91)	B		
(69-80)	C		
(55-68)	D		
(39-54)	E		
(21-38)	F		
(1-20)	G		
Not energy efficient - higher running costs			
England, Scotland & Wales		EU Directive 2002/91/EC	

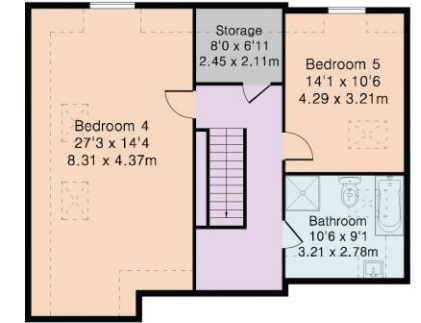


Ground Floor

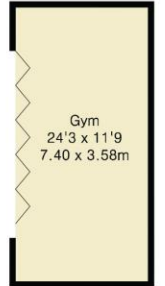
Approximate Gross Internal Area 4348 sq ft – 404 sq m
 Ground Floor Area 1912 sq ft – 178 sq m
 First Floor Area 1321 sq ft – 123 sq m
 Second Floor Area 830 sq ft – 77 sq m
 Outbuilding Area 285 sq ft – 26 sq m



First Floor



Second Floor



Outbuilding



STATONS

www.statons.com



STATONS PREMIER LETTINGS

1/2 Hadley Parade
Barnet
HERTS
EN5 5SX
020 8441 9796
lettings.office@statons.com