



Camlet Way,
Hadley Wood, EN4 0LJ



Camlet Way

A modern and luxurious ground floor two-bedroom apartment with underground parking and a desirable south-facing sun terrace.

This lovely home comprises of a large open plan kitchen with integrated Miele appliances and lounge area with a feature bay window opening out onto the private patio area.

There are two double bedrooms with bespoke built in wardrobes and modern ensembles.

To complete this apartment there is a further family bathroom, cloakroom and utility.

The apartment comes with one underground parking space and a large storage cupboard.

This property is perfectly located on one of Hadley Woods most prestigious Roads and is walking distance to Hadley Wood station & local shops.

Council Tax - H

Local Authority - Enfield





















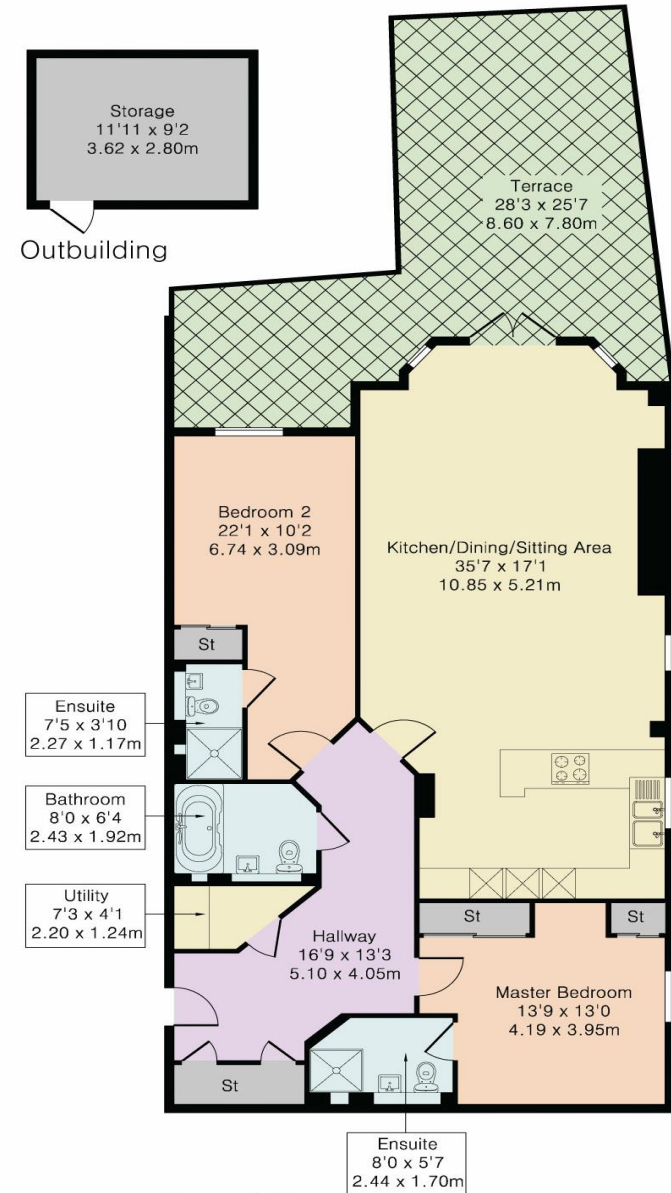
Approximate Gross Internal Area 1370 sq ft – 127 sq m
 Ground Floor Area 1261 sq ft – 117 sq m
 Outbuilding Area 109 sq ft – 10 sq m

Energy Efficiency Rating		Current	Potential
Very energy efficient - lower running costs			
(92+)	A		
(81-91)	B	86	86
(69-80)	C		
(55-68)	D		
(39-54)	E		
(21-38)	F		
(1-20)	G		
Not energy efficient - higher running costs			
England, Scotland & Wales		EU Directive 2002/91/EC	



Although Pink Plan Ltd ensures the highest level of accuracy, measurements of doors, windows and rooms are approximate and no responsibility is taken for error, omission or misstatement. These plans are for representation purposes only as defined by RICS code of measuring practise. No guarantee is given on total square footage of the property within this plan. The figure icon is for initial guidance only and should not be relied on as a basis of valuation.

DISCLAIMER: In accordance with the 1993 Misrepresentation Act the agent had not tested any apparatus, equipment, fixtures, fittings or services and so, cannot verify they are in working order, or fit for their purpose. Neither has the agent checked the legal documentation to verify the leasehold/freehold status of the property. The buyer is advised to obtain verification from their solicitor or surveyor. Also, photographs are for illustration only and may depict items which are not for sale or included in the sale of the property. All sizes are approximate. All dimensions include wardrobe spaces where applicable.



Ground Floor



STATONS
HADLEY WOOD

10 Crescent West, Hadley Wood, EN4 0EJ

Tel: 020 8440 9797

Email: hadley.office@statons.com

STATONS
www.statons.com