

STATONS

www.statons.com

Derwent Crescent

London, N20



Derwent Crescent

London, N20 - £4000 per month

4 Bedroom

3 Bathroom

2 Reception Rooms

Home Office

Modern Throughout

Extended Well

Large Rear Garden

Council Tax Band E

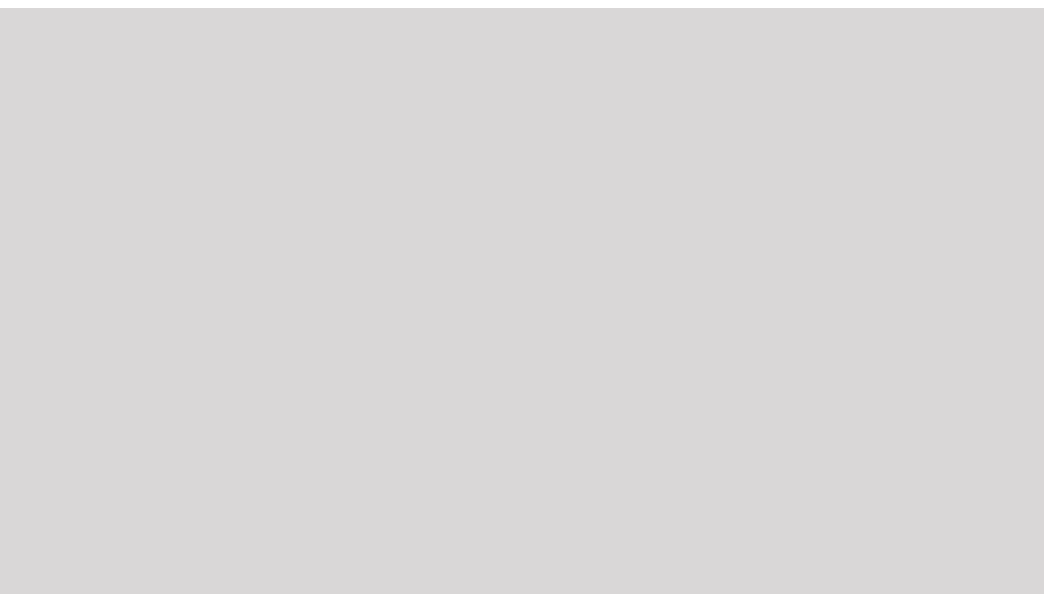


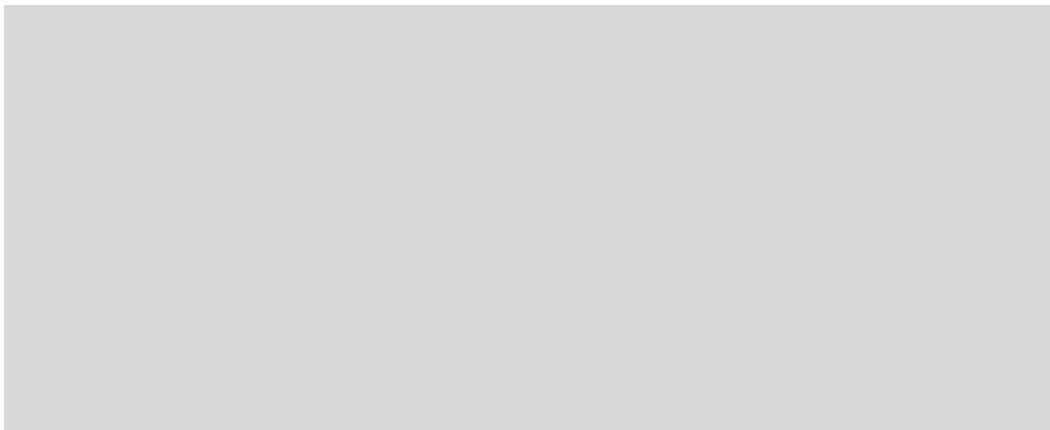








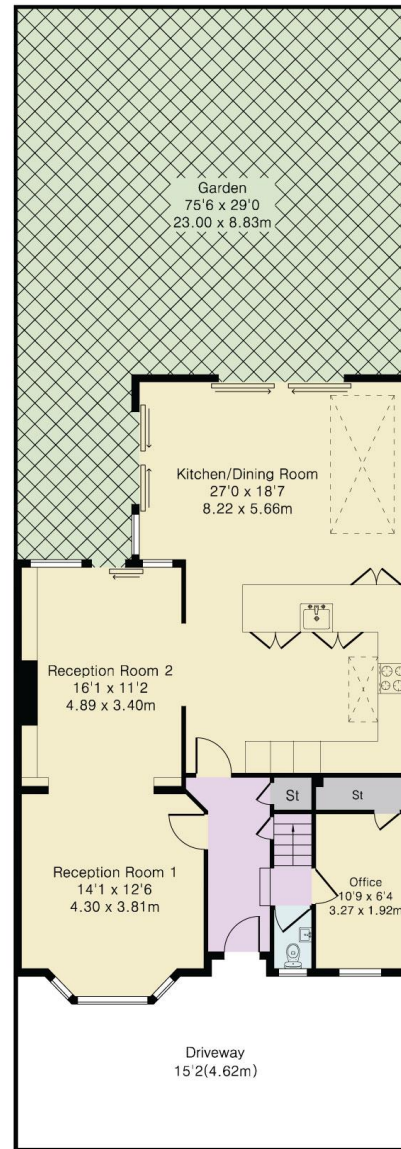






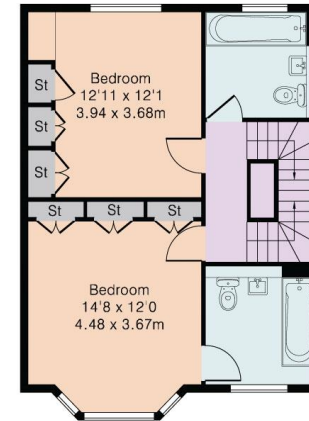


Energy Efficiency Rating		
	Current	Potential
<i>Very energy efficient - lower running costs</i>		
(92+) A		
(81-91) B		
(69-80) C	71	78
(55-68) D		
(39-54) E		
(21-38) F		
(1-20) G		
<i>Not energy efficient - higher running costs</i>		
England, Scotland & Wales	EU Directive 2002/91/EC	

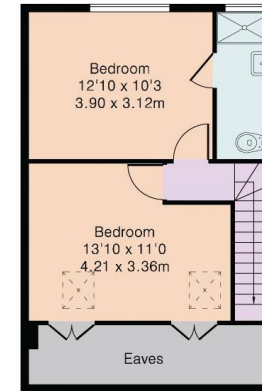


Ground Floor

Approximate Gross Internal Area 1894 sq ft – 176 sq m
 Ground Floor Area 995 sq ft – 92 sq m
 First Floor Area 534 sq ft – 50 sq m
 Second Floor Area 365 sq ft – 34sq m



First Floor



Second Floor

STATONS

www.statons.com



STATONS PREMIER LETTINGS

1/2 Hadley Parade
Barnet
HERTS
EN5 5SX
020 8441 9796
lettings.office@statons.com