

48 Toye Avenue, London, N20 0FH

STATONS
www.statons.com



48 Toye Avenue, London, N20 0FH



A beautifully presented three/four double bedroom end of terrace townhouse, located in a tranquil tree lined street, built in 2019 to an excellent standard.

Downstairs features an open plan TV room & dining area with a spacious kitchen to the rear, boasting a range of high specification modern fitted wall and base units with fully integrated appliances. There are bi-folding doors leading out to a well maintained garden, also featuring side access. There is also the benefit of a downstairs guest w/c.

The reception room/fourth bedroom is on the first floor overlooking the garden and is accompanied by bedroom three and a family bathroom. On the top floor, the principal bedroom with fitted wardrobes and ensuite bathroom are located, along with a spacious second bedroom, also with fitted wardrobes.

Further benefits include 2 parking space and ample storage throughout.

Toye Avenue is perfectly placed for convenient access to Whetstone High Road, Totteridge and Whetstone Tube Station & Oakleigh Park main line station. It is also close to several schools in the area such as Alma Primary School and Queenswell Junior School.

































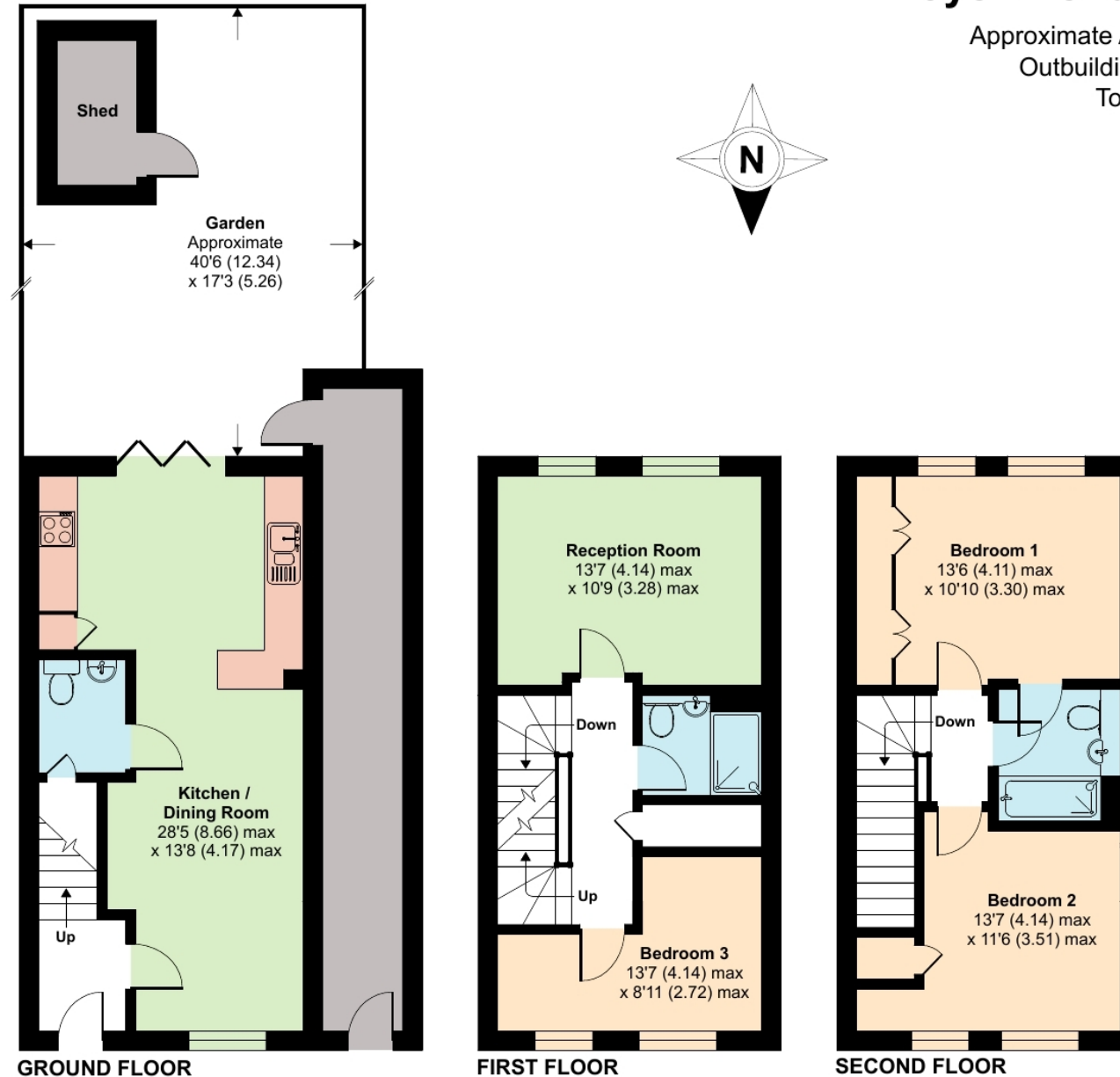
Toye Avenue, London, N20

Approximate Area = 1173 sq ft / 109 sq m

Outbuilding(s) = 169 sq ft / 15.7 sq m

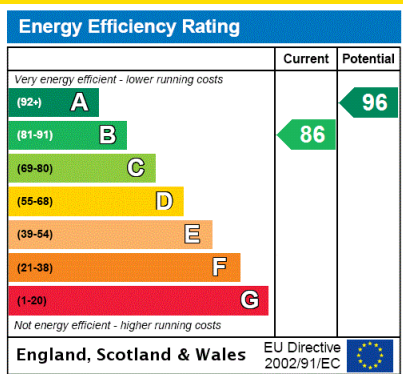
Total = 1342 sq ft / 124.7 sq m

For identification only - Not to scale



STATONS

www.statons.com



Council Tax - F
Local Authority - Barnet

STATONS
TOTTERIDGE

28-30 Totteridge Lane,
London, N20 9QL
020 8445 3694
totteridge@statons.com