



# Tudor Villas

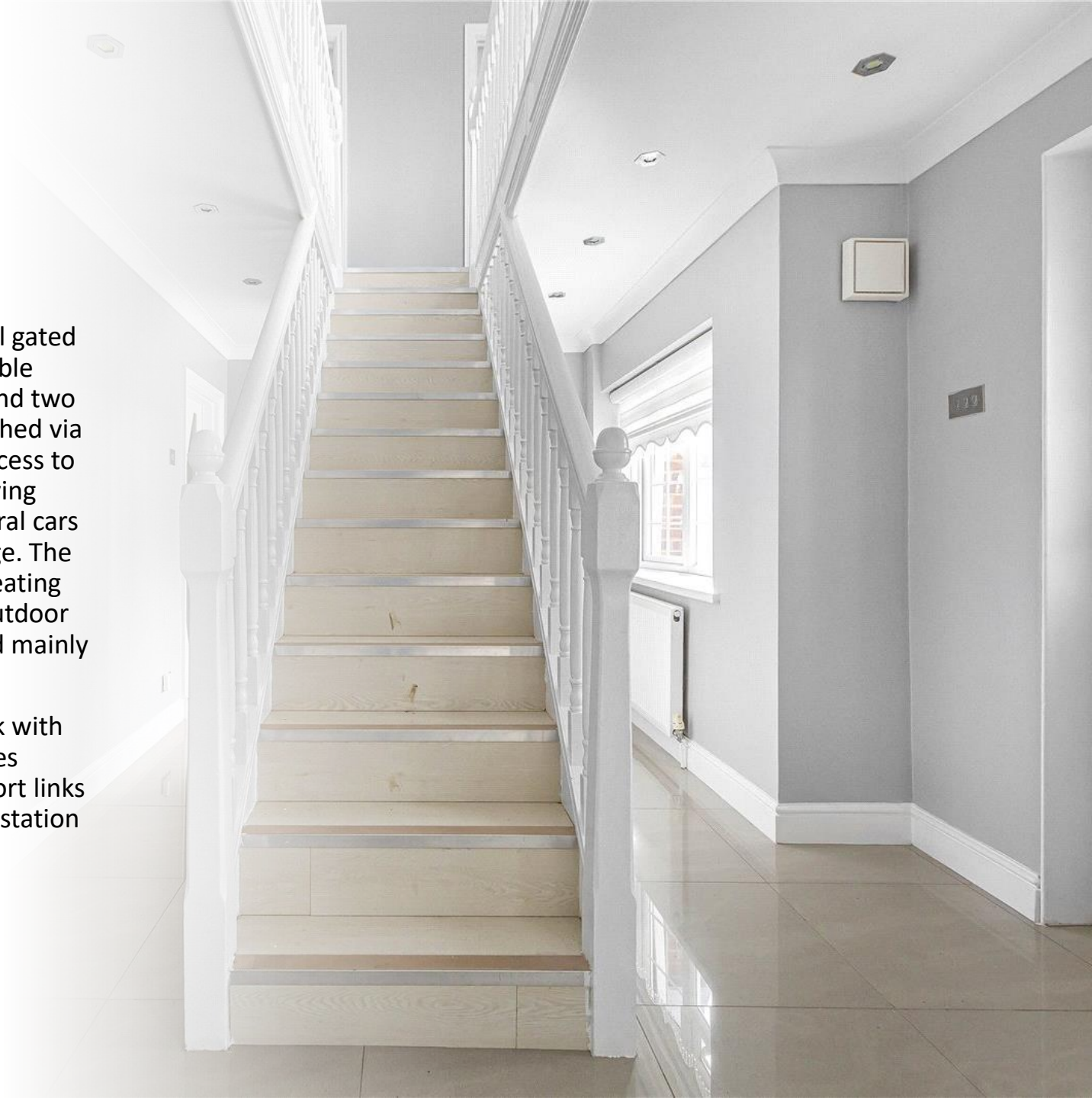
Burton Lane, Goffs Oak, EN7 6SG



# Tudor Villas

NO ONWARD CHAIN. This wonderful gated detached residence boasts four double bedrooms, three reception rooms and two bathrooms. The property is approached via electric security gates and allows access to the large frontage laid mainly to paving providing off street parking for several cars and allows access to the triple garage. The rear garden has a covered decked seating area ideal for al fresco dining and outdoor entertaining with the remainder laid mainly to lawn.

Located on Burton Lane in Goffs Oak with an excellent variety of local amenities including schools, shops and transport links including the M25 and mainline rail station (Cuffley) are all nearby.






























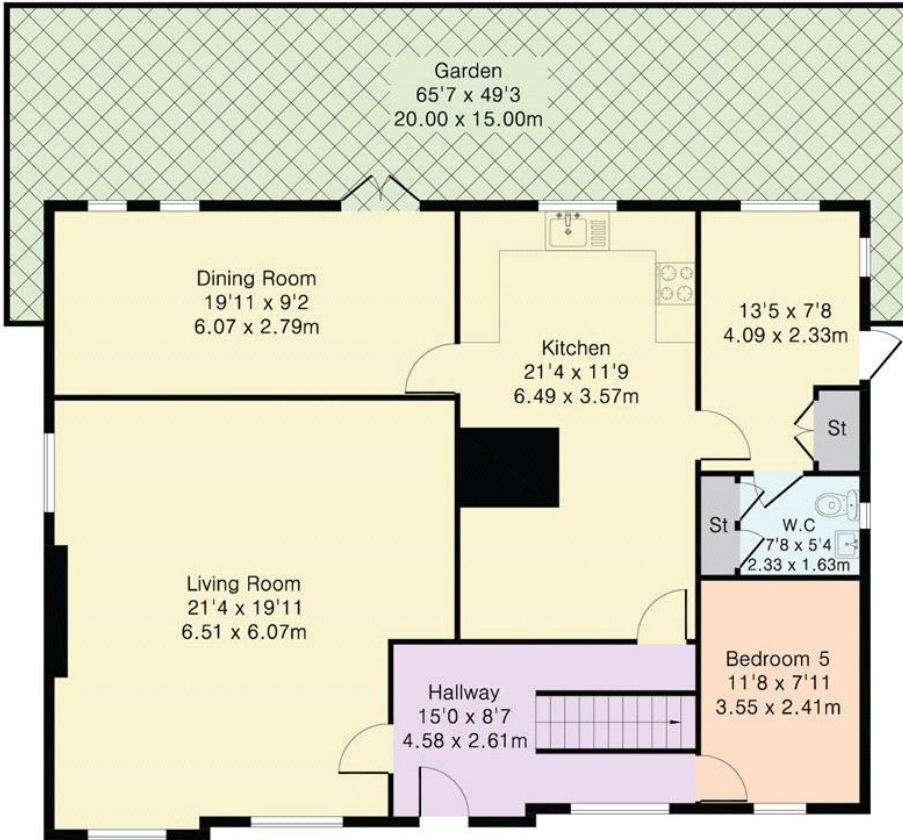




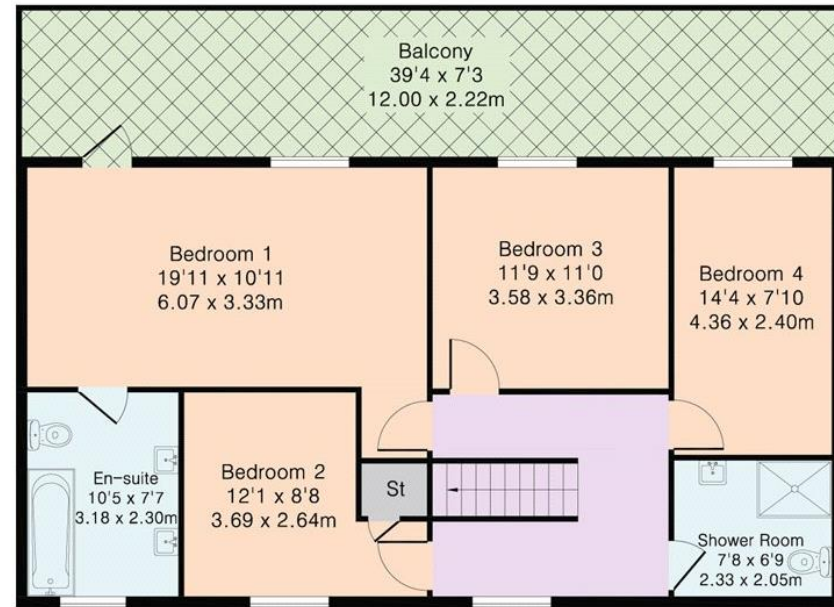


Approximate Gross Internal Area 2056 sq ft – 191 sq m  
 Ground Floor Area 1200 sq ft – 112 sq m  
 First Floor Area 856 sq ft – 79 sq m

Energy Efficiency Rating		
	Current	Potential
Very energy efficient - lower running costs		
(92+) <b>A</b>		
(81-91) <b>B</b>		<b>81</b>
(69-80) <b>C</b>		
(55-68) <b>D</b>	<b>68</b>	
(39-54) <b>E</b>		
(21-38) <b>F</b>		
(1-20) <b>G</b>		
Not energy efficient - higher running costs		
England, Scotland & Wales	EU Directive 2002/91/EC	



Ground Floor



First Floor

