



STATONS

Beulah Court

Hadley Wood



Beulah Court Hadley Wood Hertfordshire EN4 0JW

Welcome to luxurious living in the heart of Hadley Wood! Nestled within a gated community is this 2-bedroom, 2-bathroom apartment on the 2nd floor with lift.

The modern kitchen, featuring modern countertops and appliances, and ample storage space.

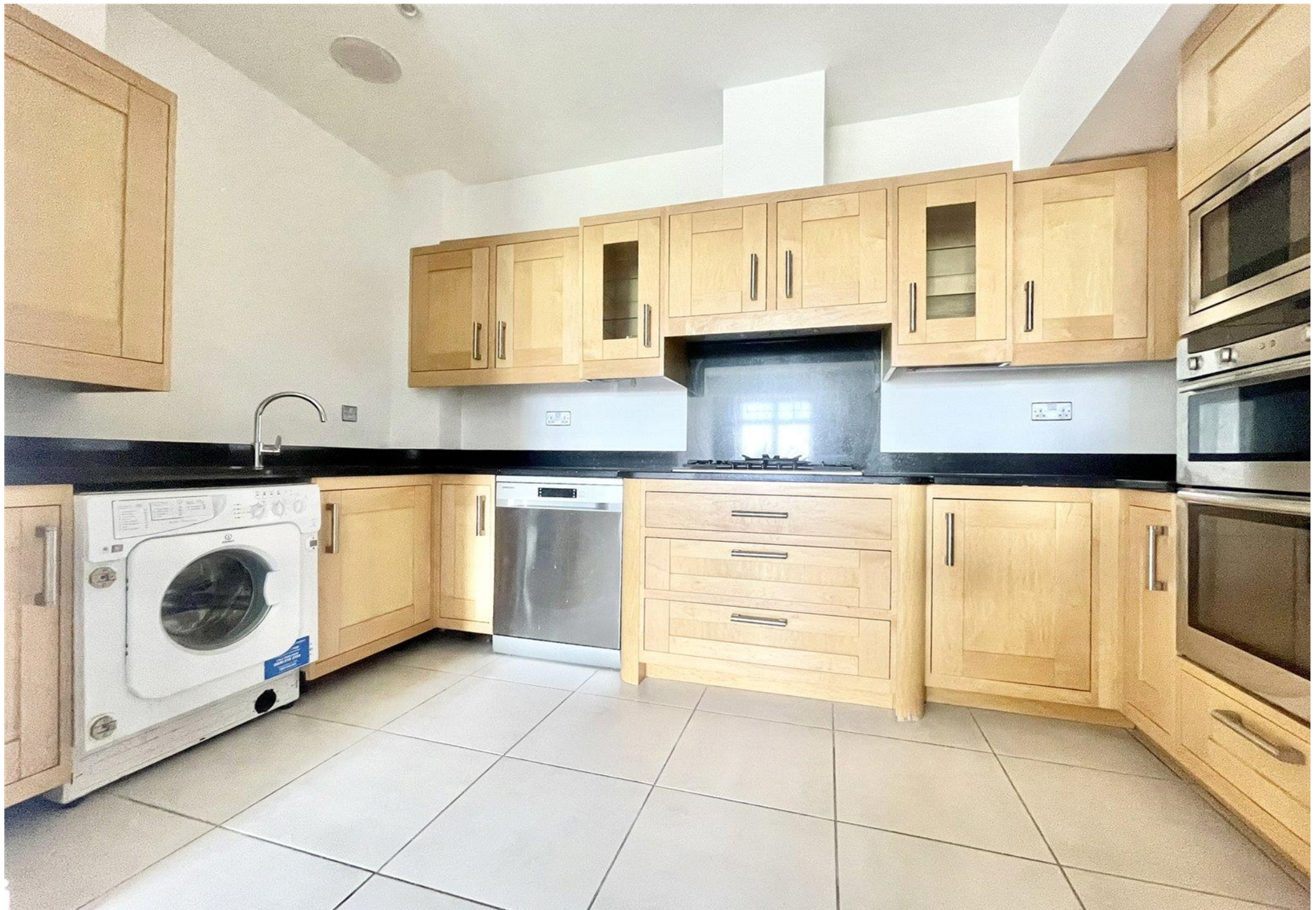
The master bedroom is a tranquil retreat, offering a peaceful place to unwind at the end of the day. Complete with an en-suite bathroom, it provides the ultimate in comfort and convenience. The second bedroom is equally inviting, ideal for guests or as a home office or den.

Convenience is key with this apartment, as it features a lift for easy access to the 2nd floor. Additionally, being set behind gates adds an extra layer of security and privacy, providing you with peace of mind and a sense of exclusivity.

With 861 square feet of thoughtfully designed living space, this apartment offers the perfect blend of comfort and sophistication. Whether you're enjoying the serenity of your private retreat or exploring the vibrant community of Hadley Wood, this is truly a place to call home.











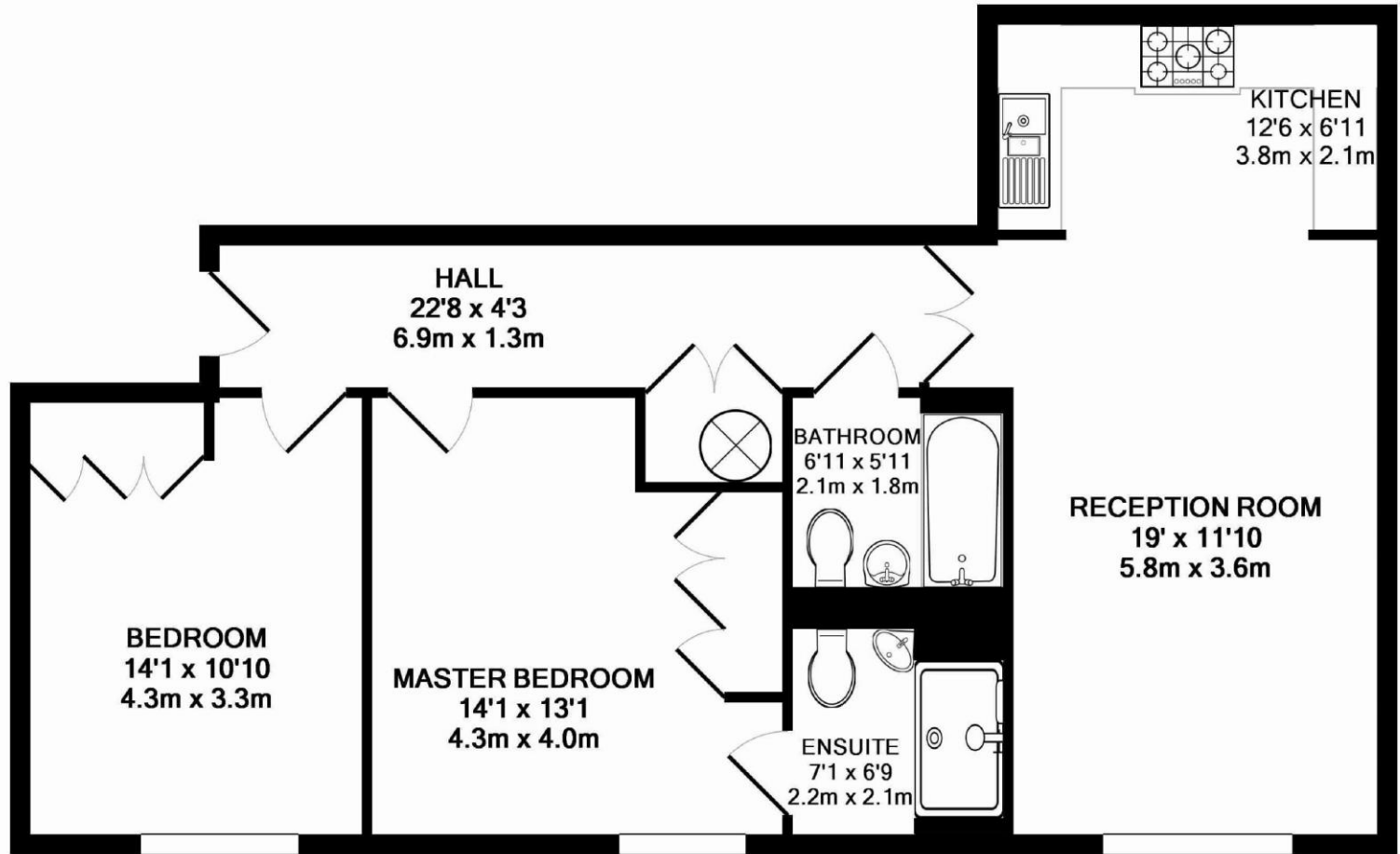












Energy Efficiency Rating		Current	Potential
Very energy efficient - lower running costs			
(92+)	A		
(81-91)	B	82	82
(69-80)	C		
(55-68)	D		
(39-54)	E		
(21-38)	F		
(1-20)	G		
Not energy efficient - higher running costs			
England, Scotland & Wales		EU Directive 2002/91/EC	

TOTAL APPROX. FLOOR AREA 853 SQ.FT. (79.3 SQ.M.)

Whilst every attempt has been made to ensure the accuracy of the floor plan contained here, measurements of doors, windows, rooms and any other items are approximate and no responsibility is taken for any error, omission, or mis-statement. This plan is for illustrative purposes only and should be used as such by any prospective purchaser. The services, systems and appliances shown have not been tested and no guarantee as to their operability or efficiency can be given
 Made with Metropix ©2013



DISCLAIMER: In accordance with the 1993 Misrepresentation Act the agent had not tested any apparatus, equipment, fixtures, fittings or services and so, cannot verify they are in working order, or fit for their purpose. Neither has the agent checked the legal documentation to verify the leasehold/freehold status of the property. The buyer is advised to obtain verification from their solicitor or surveyor. Also, photographs are for illustration only and may depict items which are not for sale or included in the sale of the property. All size are approximate. All dimensions include wardrobe spaces where applicable.

STATONS

STATONS
PREMIER LETTINGS

1 HADLEY PARADE
BARNET
HERTS
EN5 5SX

020 8441 9796
lettings.office@statons.com

