

Daffodil Crescent

Trent Park

Daffodil Crescent

Trent Park, Barnet, EN4 0EB

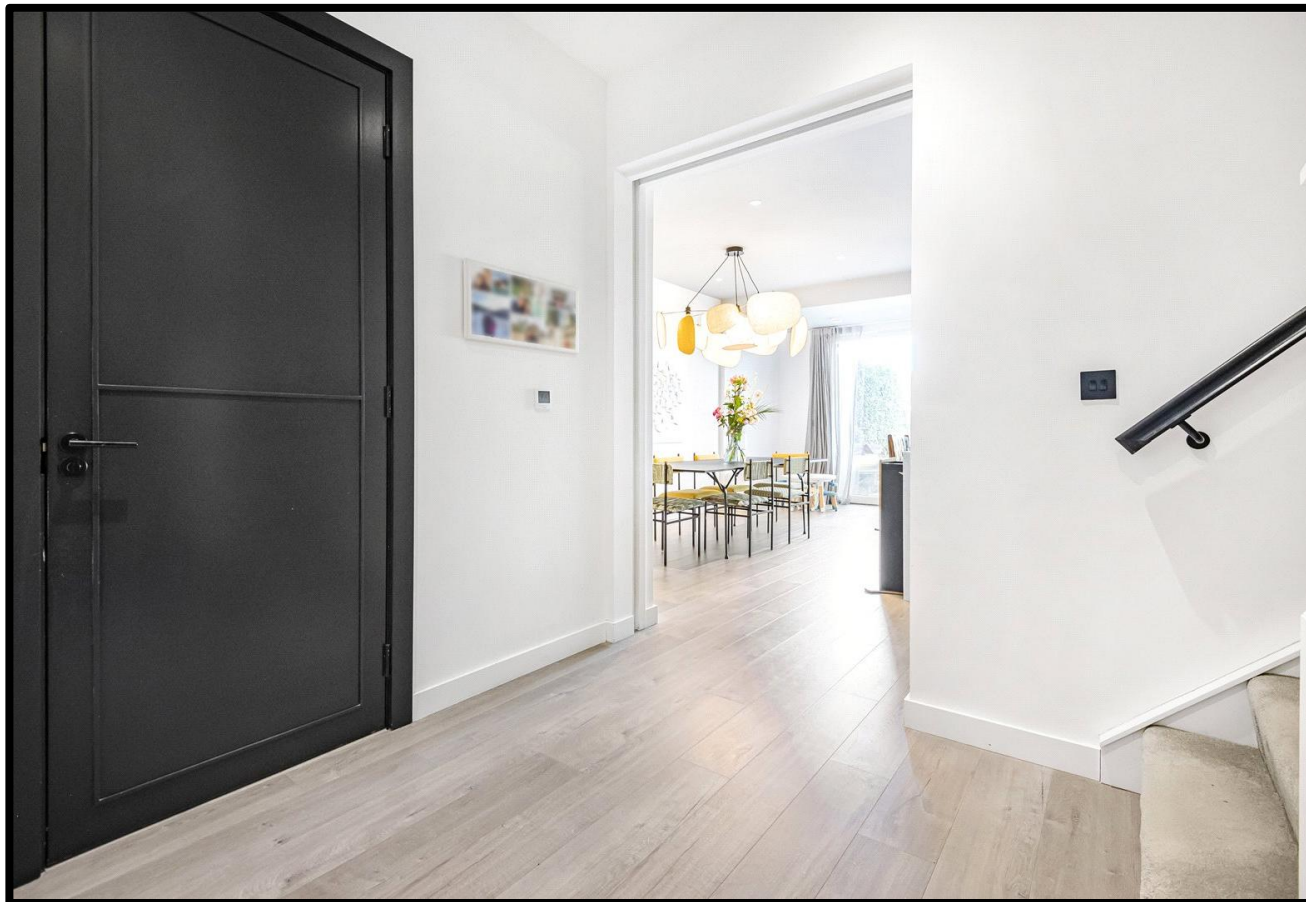
This stunning four-bedroom end-of-terrace home spans three floors, each featuring outdoor spaces with uninterrupted views of Trent Park. Part of a unique Berkeley Homes development, it is crafted to the highest standards of modern luxury.

As the largest in a row of five, it offers expansive living areas and generous outdoor space, seamlessly blending with the 413 acres of lush greenery and forest that define the Trent Park lifestyle. The property also benefits from two underground parking spaces for added convenience.

As a Trent Park resident, you will also have access to private outdoor tennis courts, a gym, and a swimming pool, which include changing rooms and shower facilities. There is also the added benefit of 24-hour security with a gated entrance.

Council Tax - G

Local Authority - Enfield













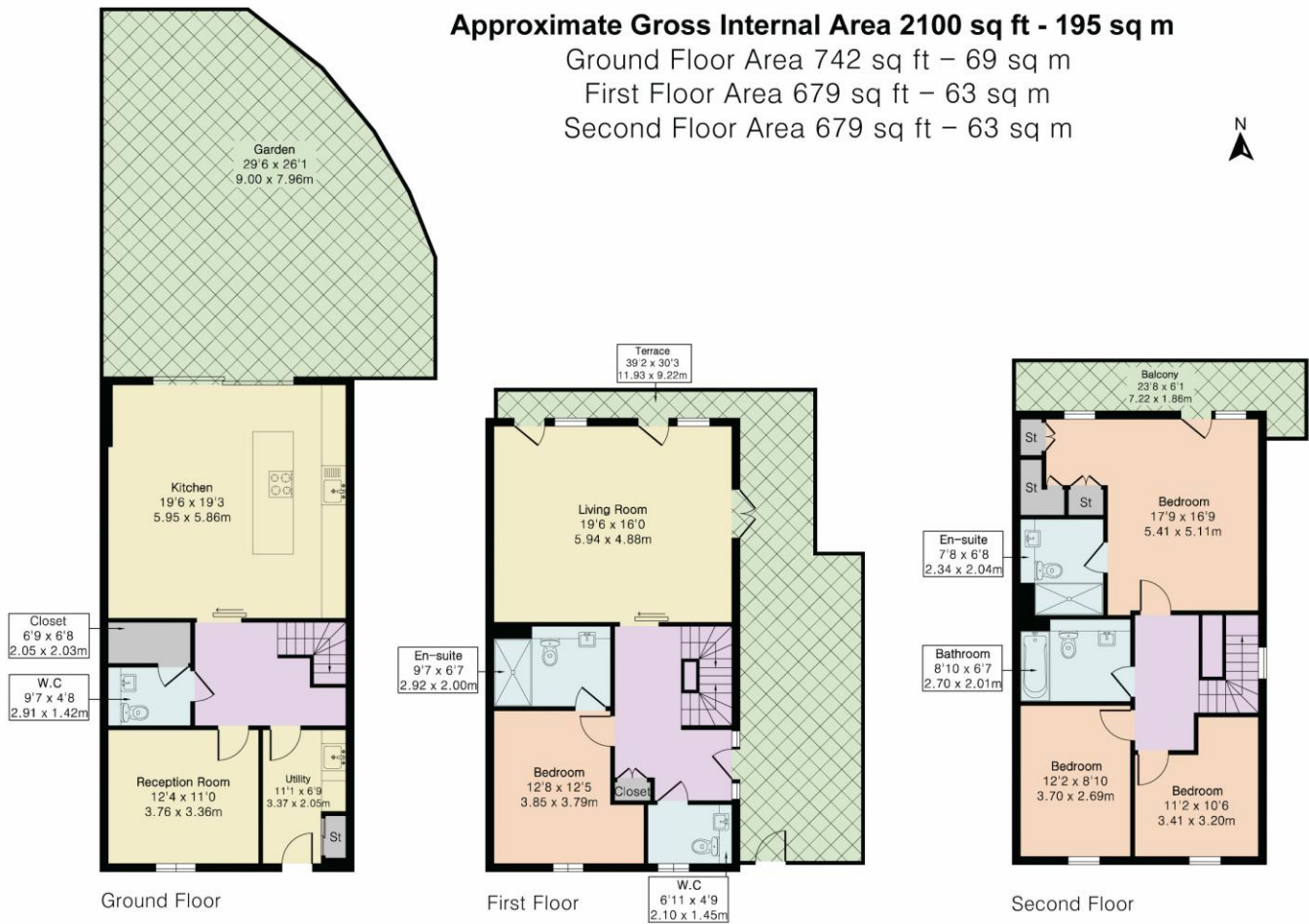








Score	Energy rating	Current	Potential
92+	A		
81-91	B	86 B	91 B
69-80	C		
55-68	D		
39-54	E		
21-38	F		
1-20	G		



Although Pink Plan Ltd ensures the highest level of accuracy, measurements of doors, windows and rooms are approximate and no responsibility is taken for error, omission or misstatement. These plans are for representation purposes only as defined by RICS code of measuring practise. No guarantee is given on total square footage of the property within this plan. The figure icon is for initial guidance only and should not be relied on as a basis of valuation.



STATONS

www.statons.com

STATONS PREMIER LETTINGS

1/2 Hadley Parade
Barnet
HERTS
EN5 5SX
020 8441 9796
lettings.office@statons.com

