



**Albemarle Road**  
**East Barnet, Barnet, EN4**





## Albemarle Road

We are pleased to offer a beautifully presented semi-detached home offering an exceptional blend of modern style and family-friendly living.

Situated in a desirable neighbourhood within walking distance of Oakleigh Park mainline station, Oakhill Park.

The property comprises of four bedrooms, including a light and airy master bedroom with its own en-suite bathroom. The heart of the home is a contemporary kitchen, designed with and a functional breakfast bar.

The open-plan living and dining areas are bright and inviting, creating the ideal space for both everyday life and entertaining, whilst the front reception makes a wonderful tranquil living space for everyday living.

Additional highlights of this property include off-street parking and a location that offers convenience to excellent schools, shopping amenities, and transport links.

With its versatile layout, this property is move-in ready and perfectly suited to modern family living. Viewing is highly recommended to fully appreciate its many features and charm.

ST



**STATONS**





Always remember  
you're BRAVER  
than you BELIEVE  
STRONGER  
than you SEEM  
SMARTER  
than you THINK  
& LOVED  
more than you know

**STATONS**





**STATONS**





**STATONS**





**STATONS**





**STATONS**





**STATONS**





**STATONS**





**STATONS**









**STATONS**





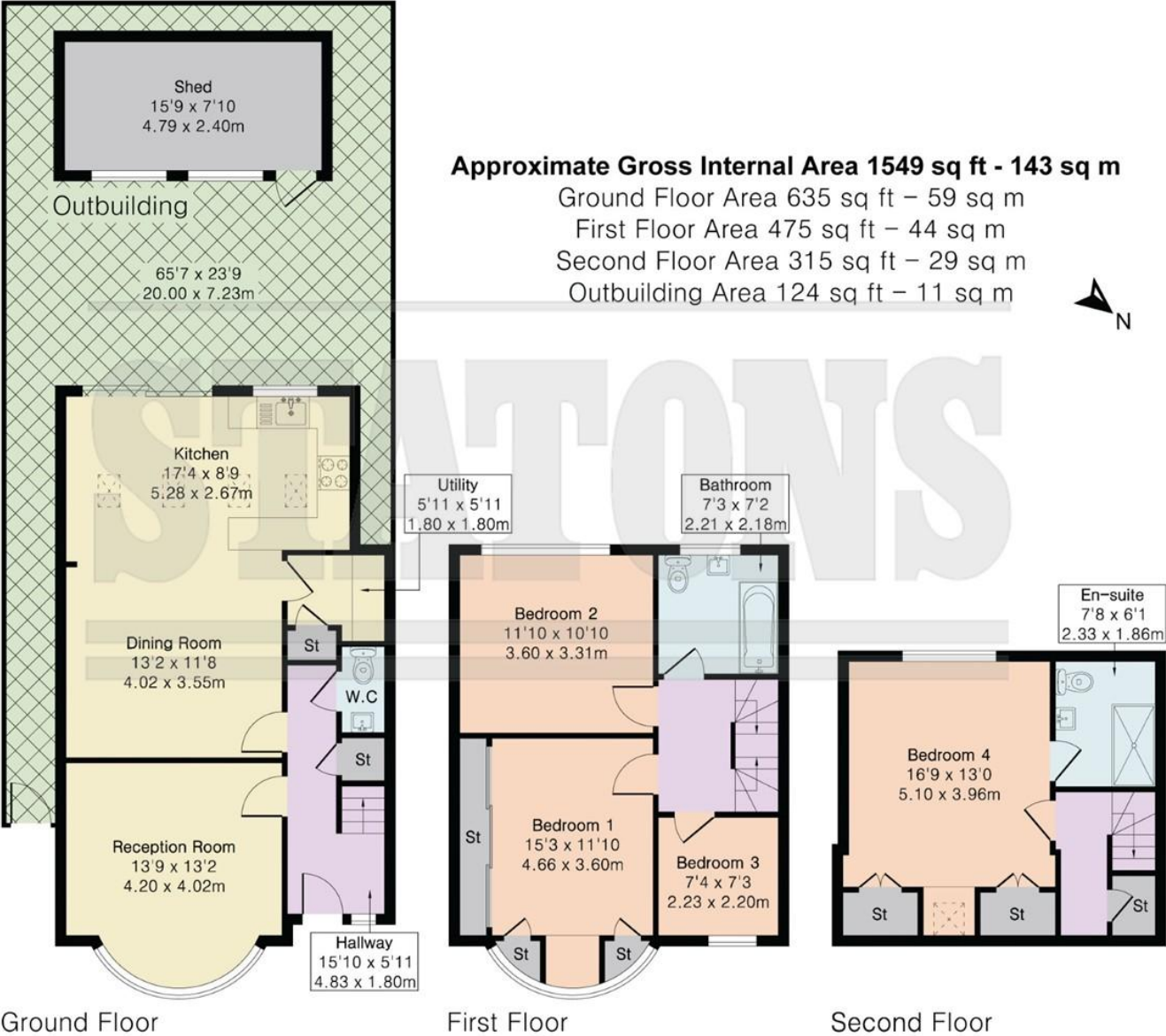
**STATONS**





**STATONS**







# STATONS

[www.statons.com](http://www.statons.com)



Score	Energy rating	Current	Potential
92+	A		
81-91	B		85 B
69-80	C		
55-68	D	59 D	
39-54	E		
21-38	F		
1-20	G		

Council Tax - D  
Local Authority – Barnet

**STATONS  
BARNET**

**1 HADLEY PARADE  
HIGH STREET  
BARNET  
EN5 5SX**

0208 449 3383  
[barnet@statons.com](mailto:barnet@statons.com)



**STATONS**