

STATONS

www.statons.com

One Rosebury Close

Goffs Oak, EN7

Rosebury Close

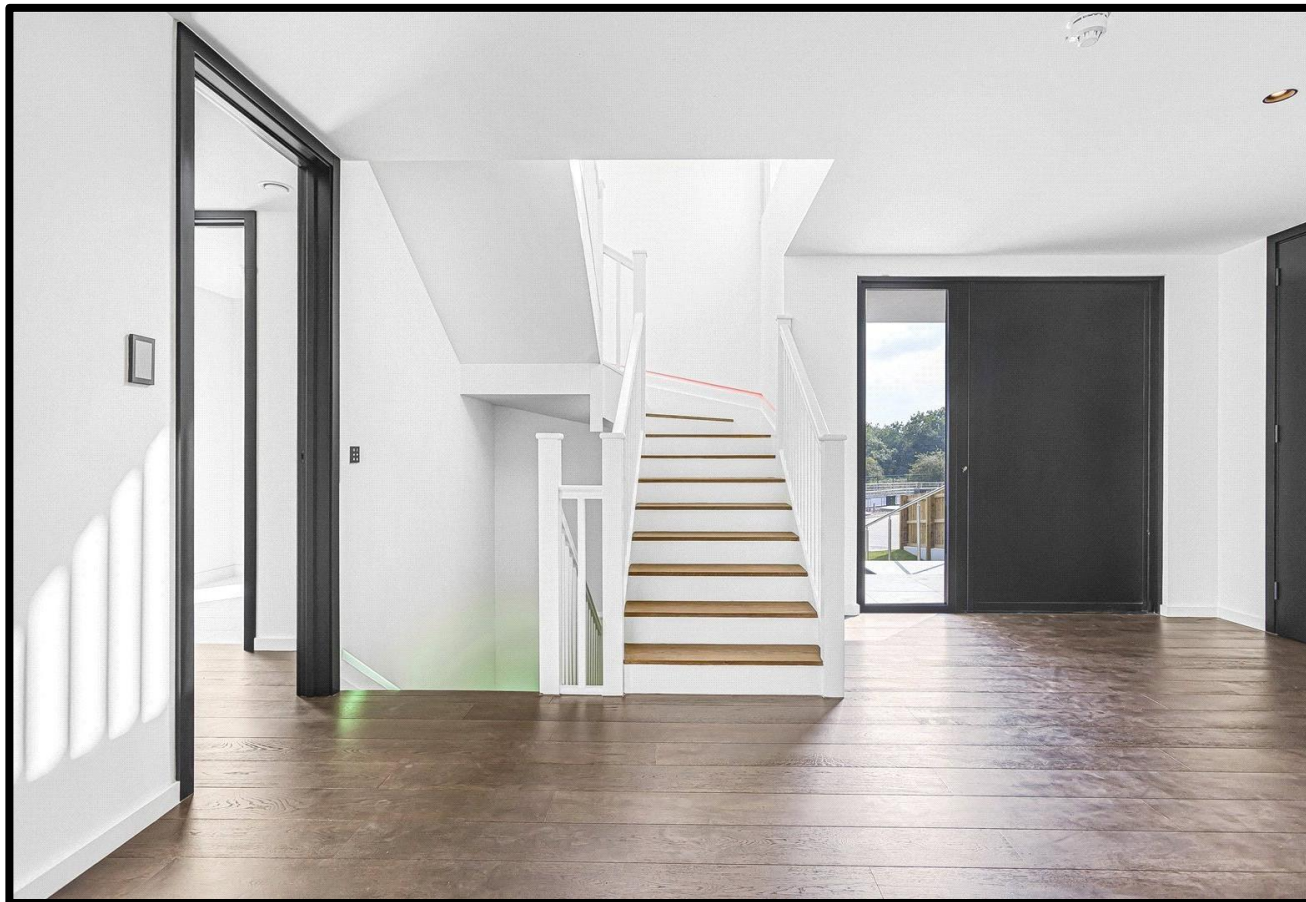
Goffs Oak, Hertfordshire, EN7 6UZ

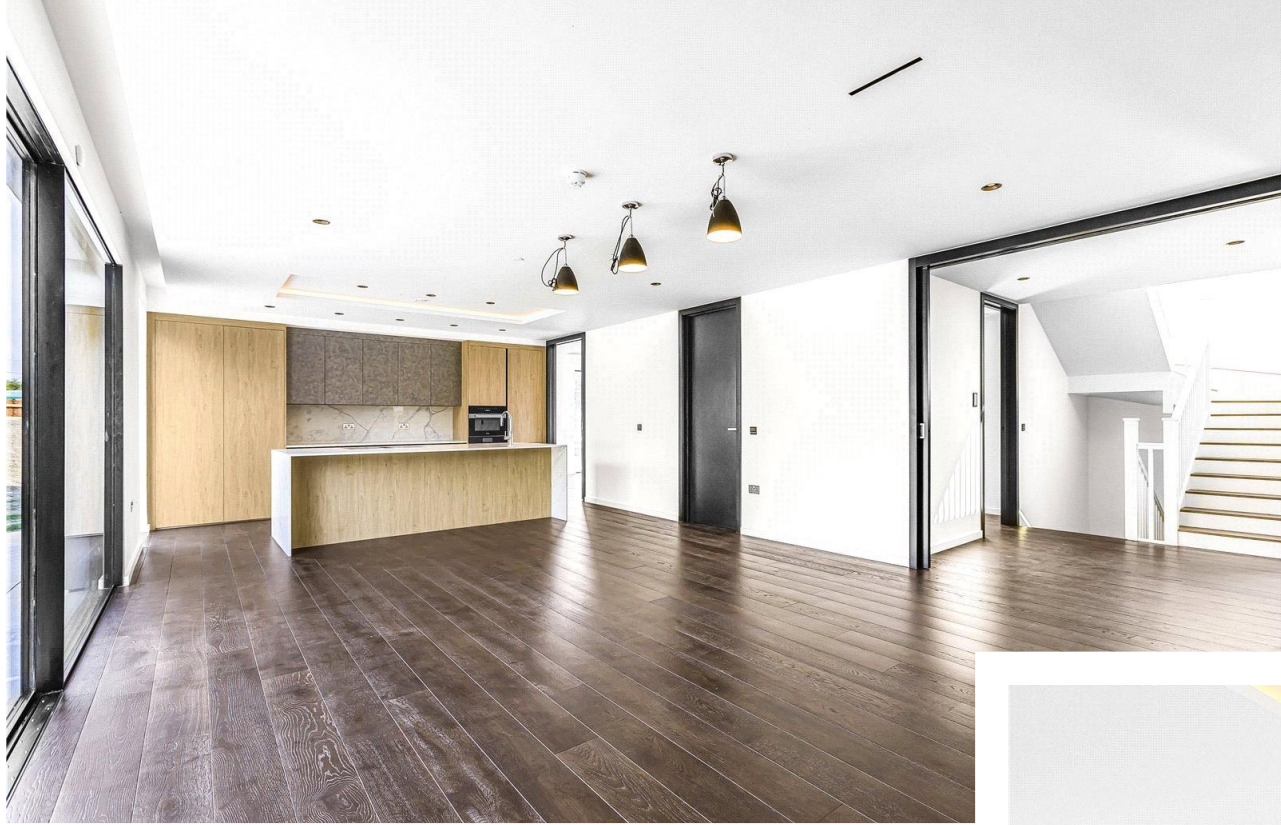
Introducing an extraordinary residence that epitomizes modern luxury living at its finest. This unparalleled detached house, encompassing a sprawling 6638 square feet, stands majestically on a generous 0.6-acre of land, offering a rare oasis of space and tranquility. This distinguished property boasts a total of 6 spacious bedrooms, each designed with a meticulous attention to detail, ensuring both comfort and style.

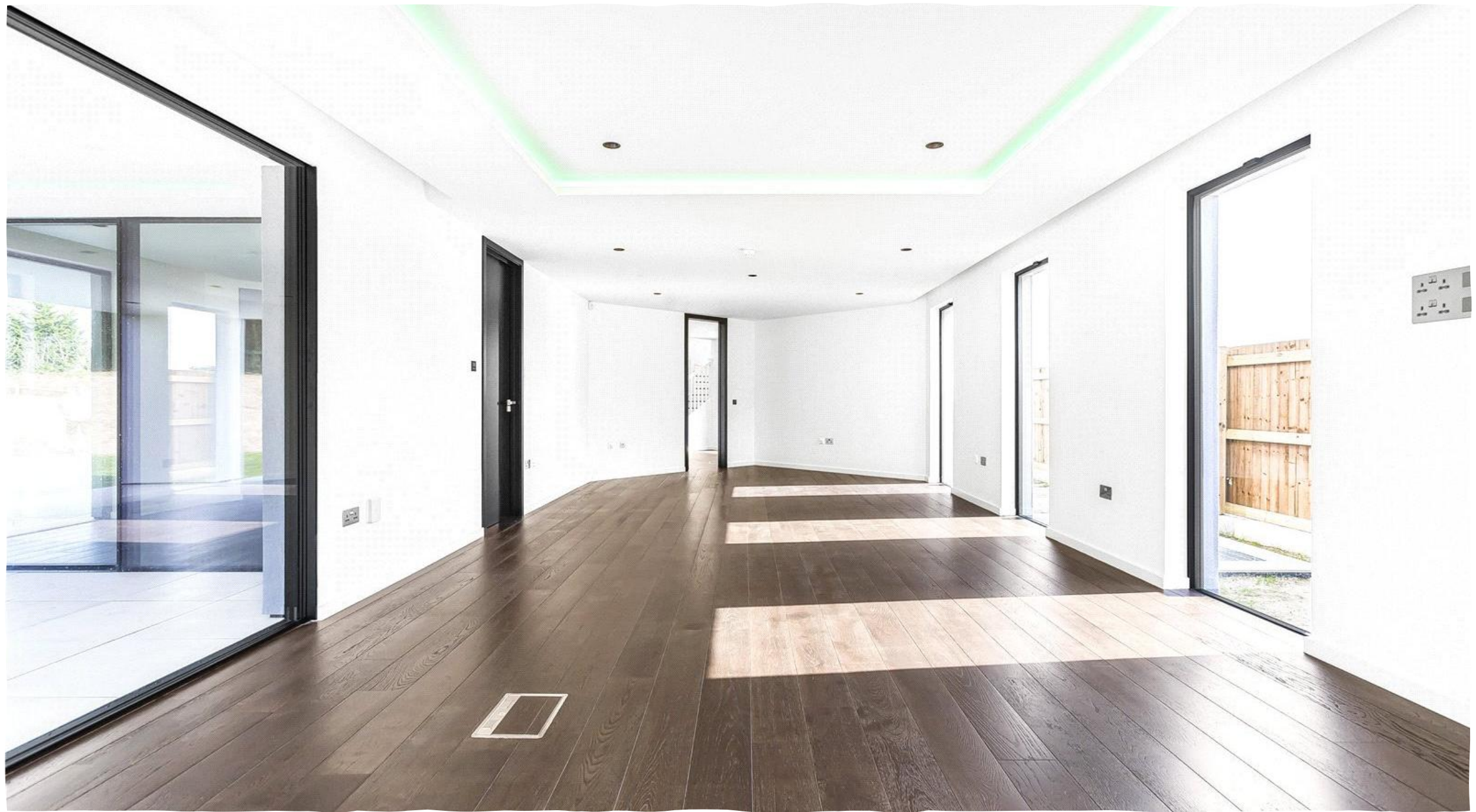
Please note that the bedroom adjacent to the main suite has been converted into a walk-in wardrobe with an additional en suite, serving the main suite. Immerse yourself in the epitome of sophistication with high-quality finishes that set this home apart from others. Every detail, from flooring to fixtures, has been chosen to exceed expectations. Revel in specifications that redefine the standard, setting this residence apart as a truly unique and exceptional property. From cutting-edge technology to bespoke design elements, every aspect has been carefully curated.

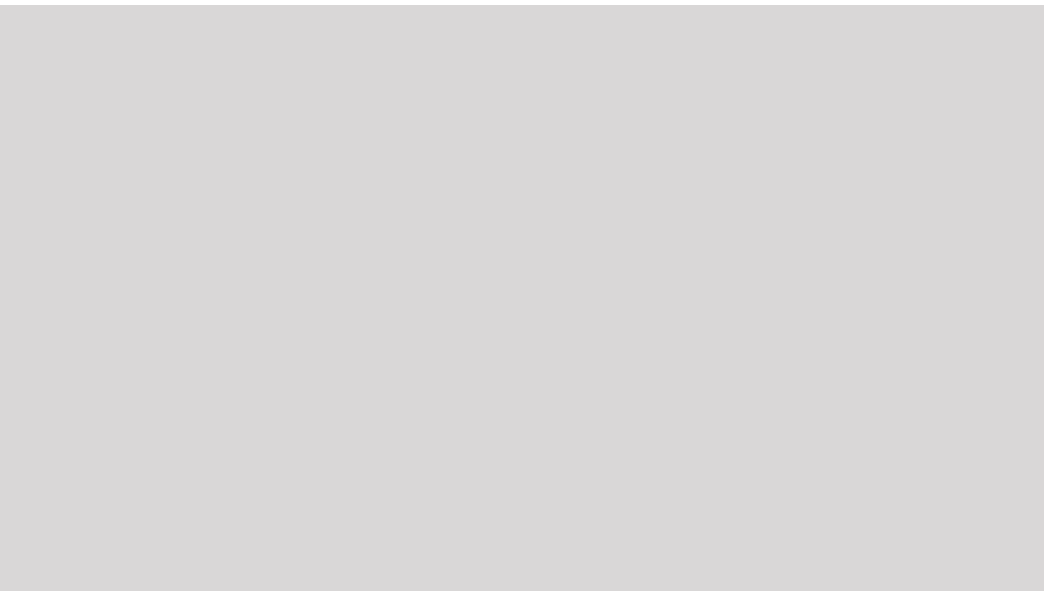
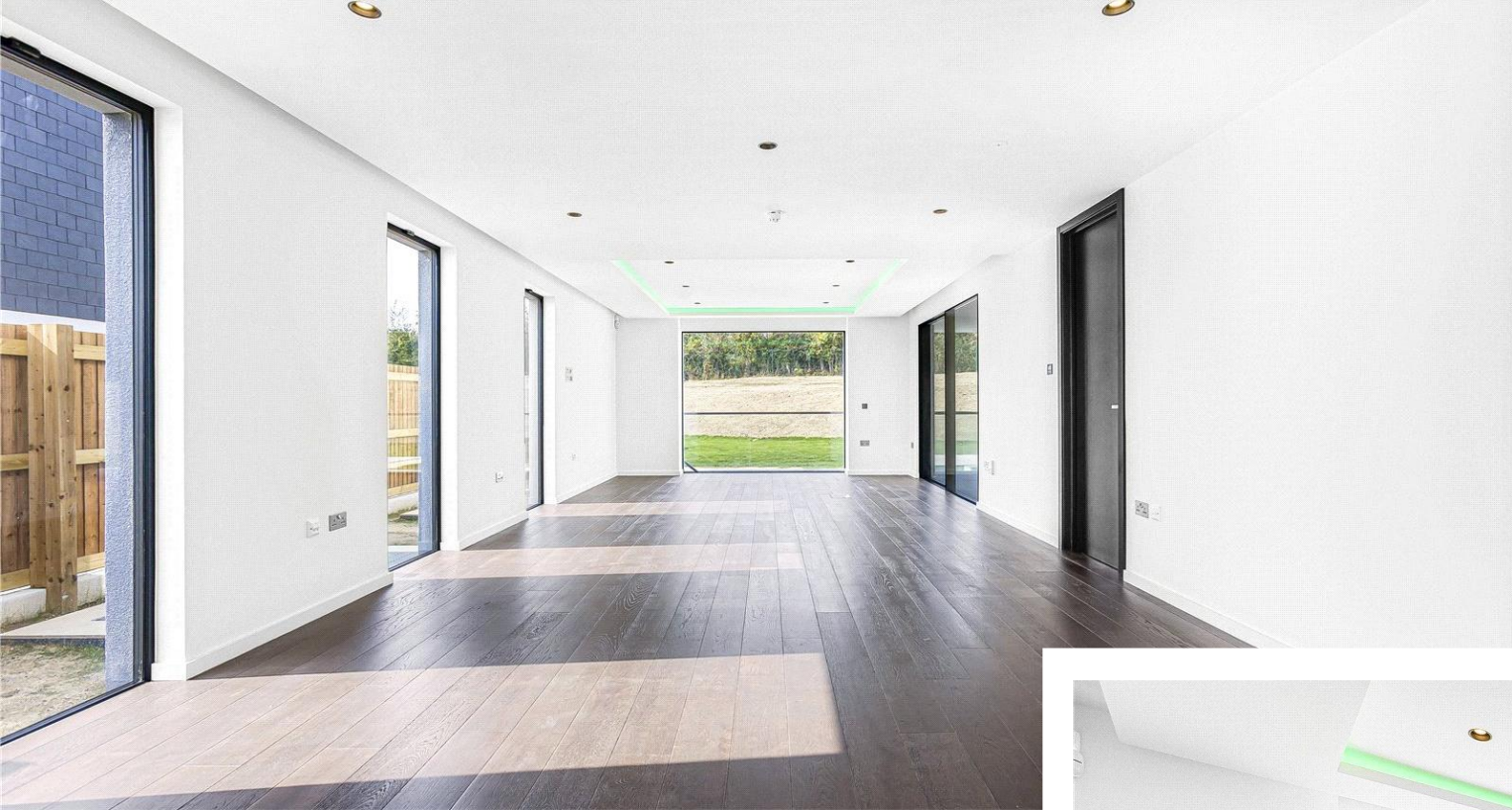
Local authority: Broxbourne Borough Council

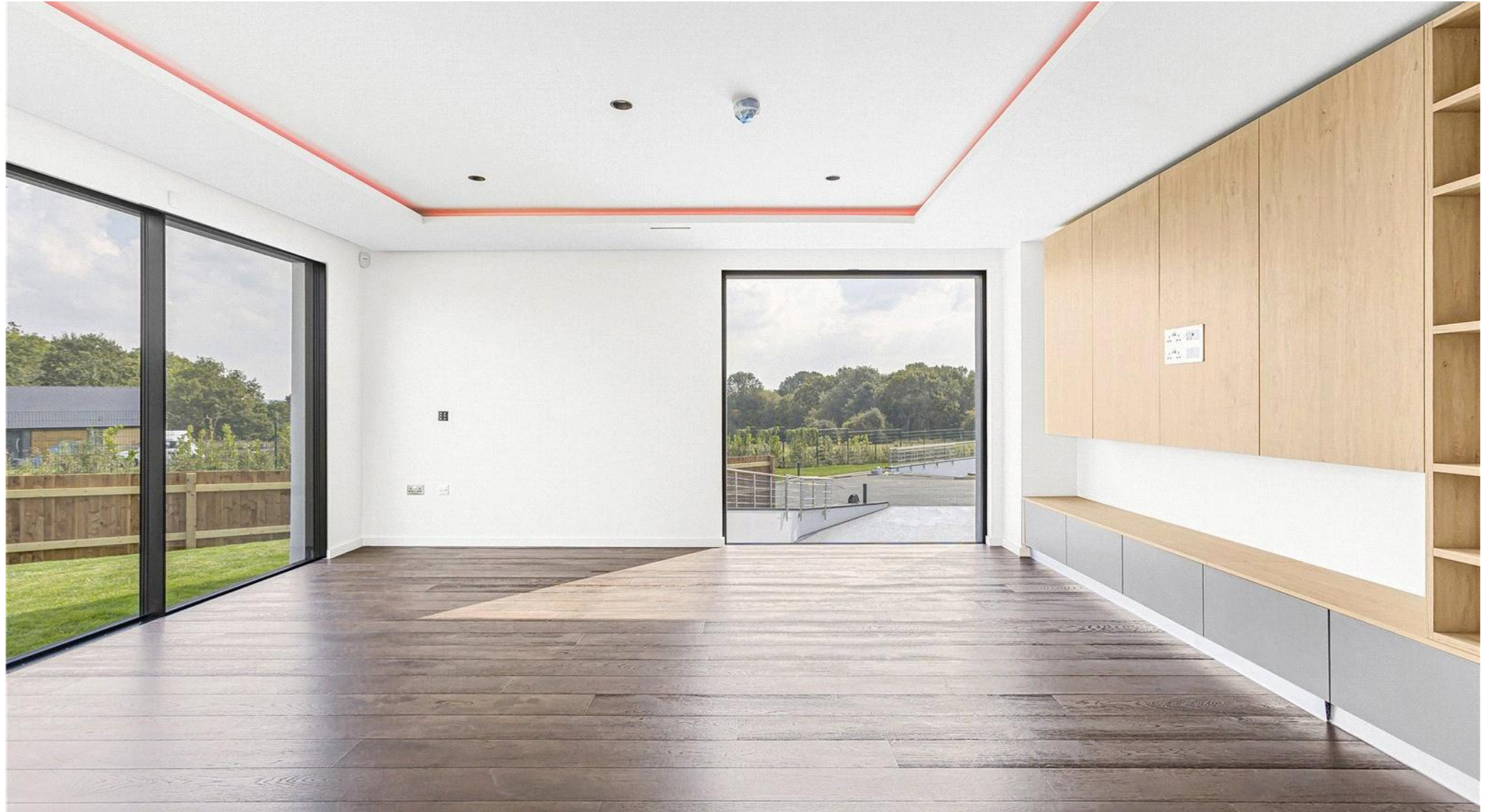
Council tax band: TBC

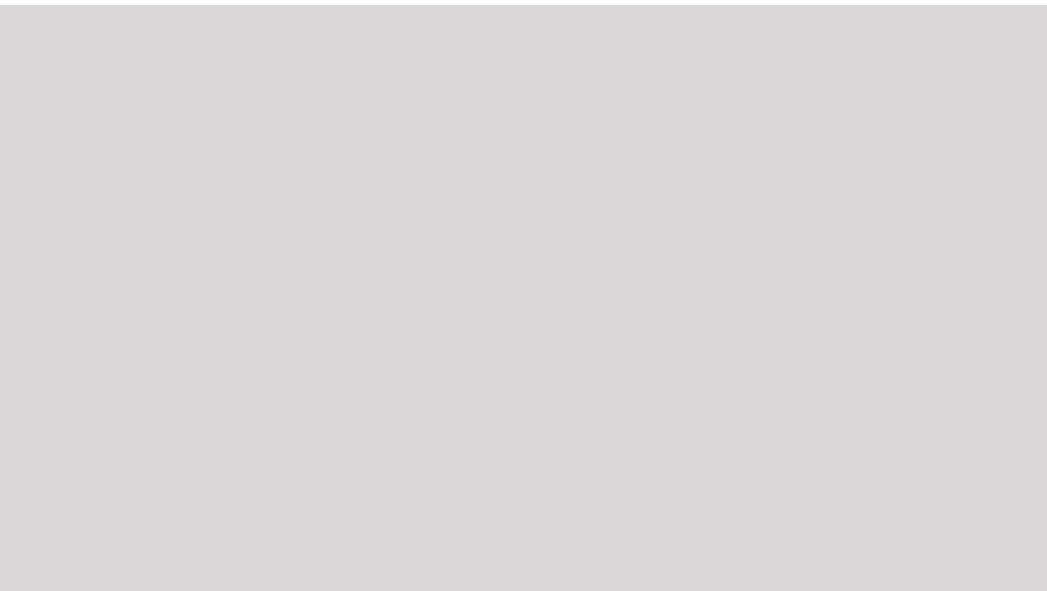
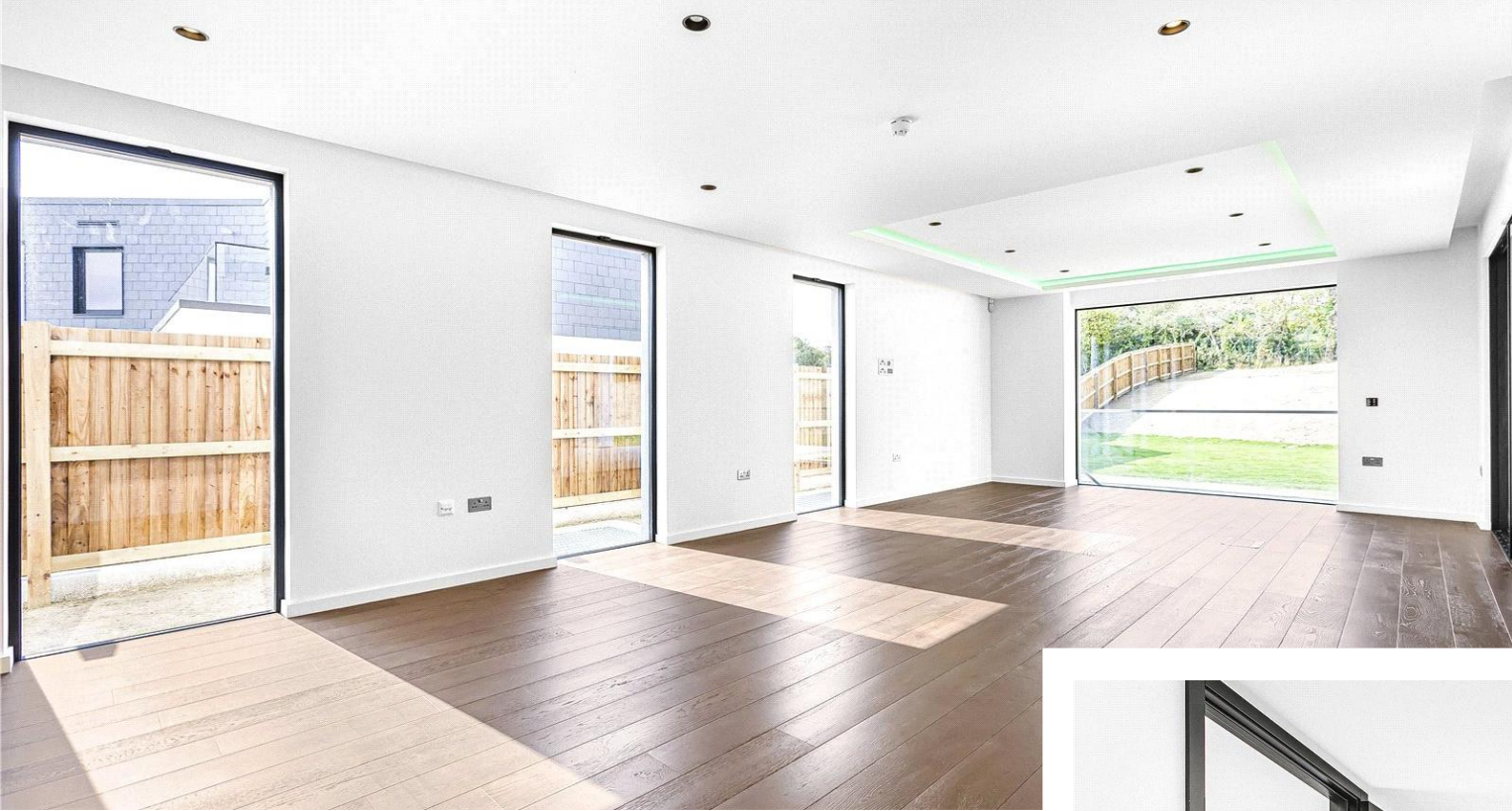


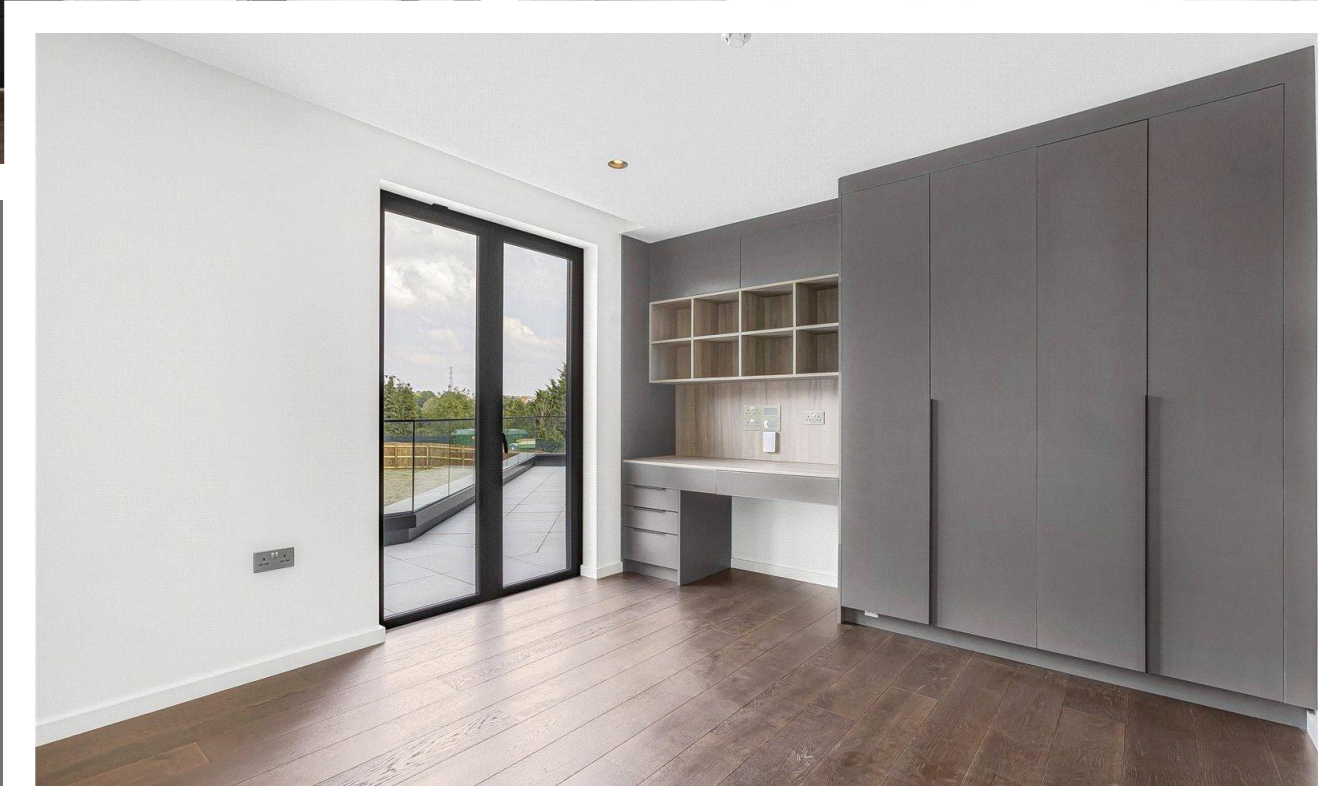
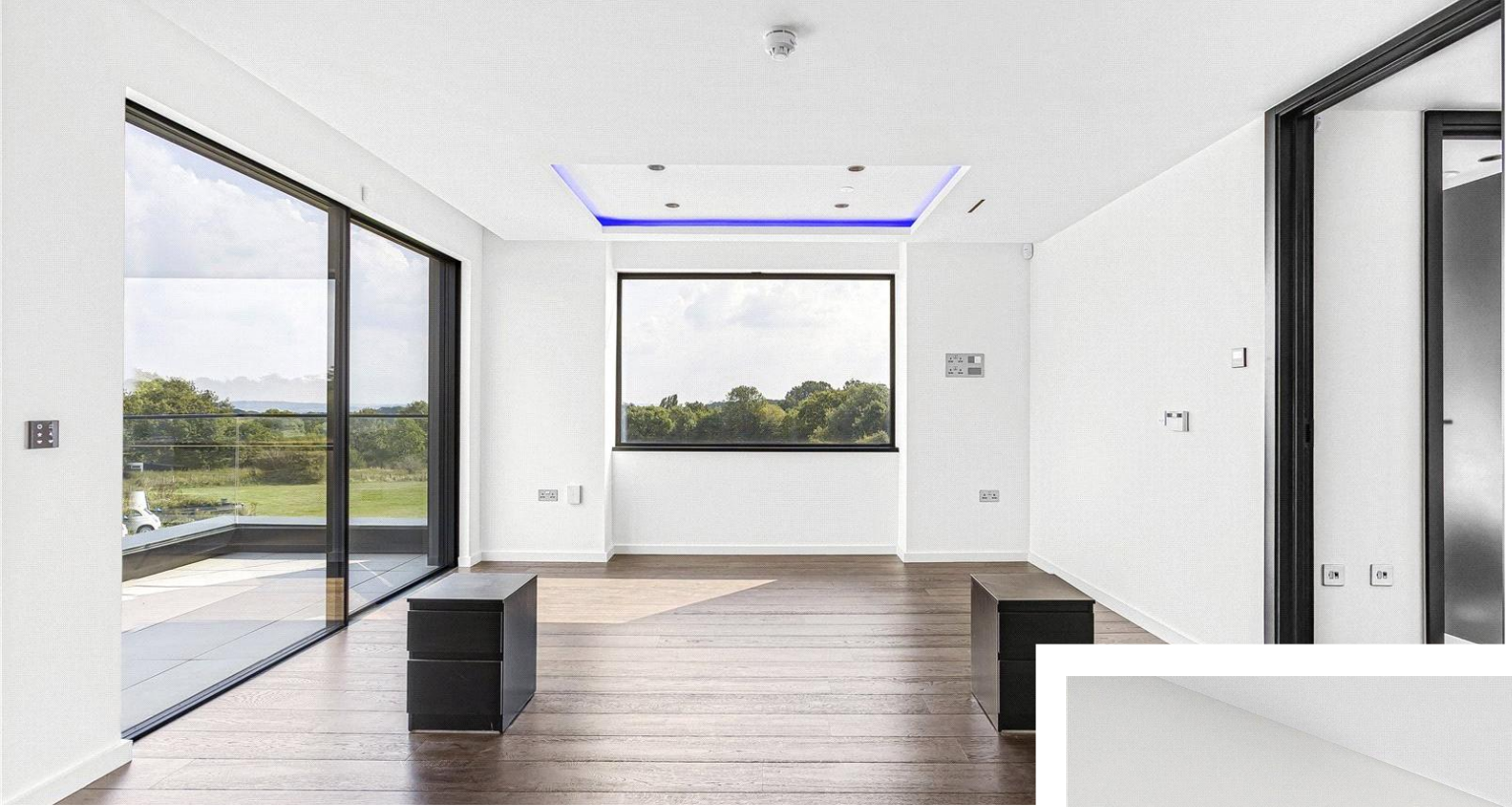


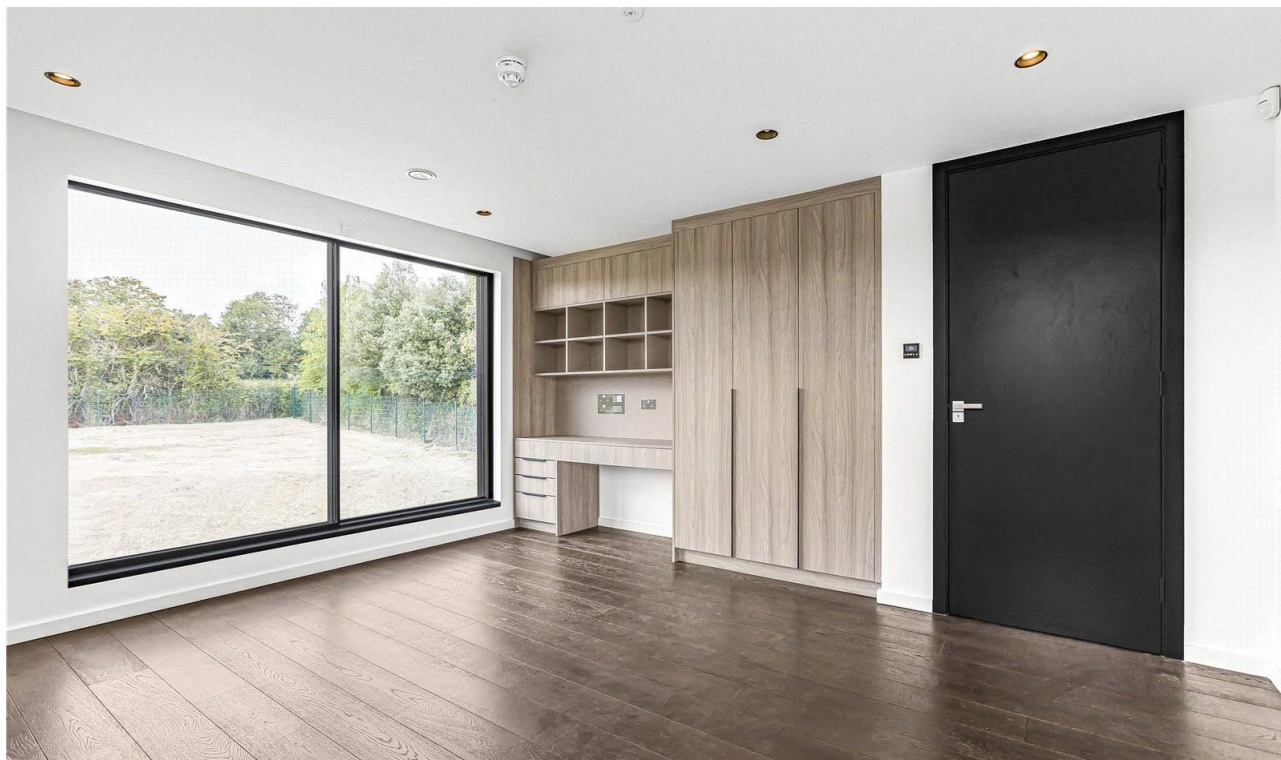


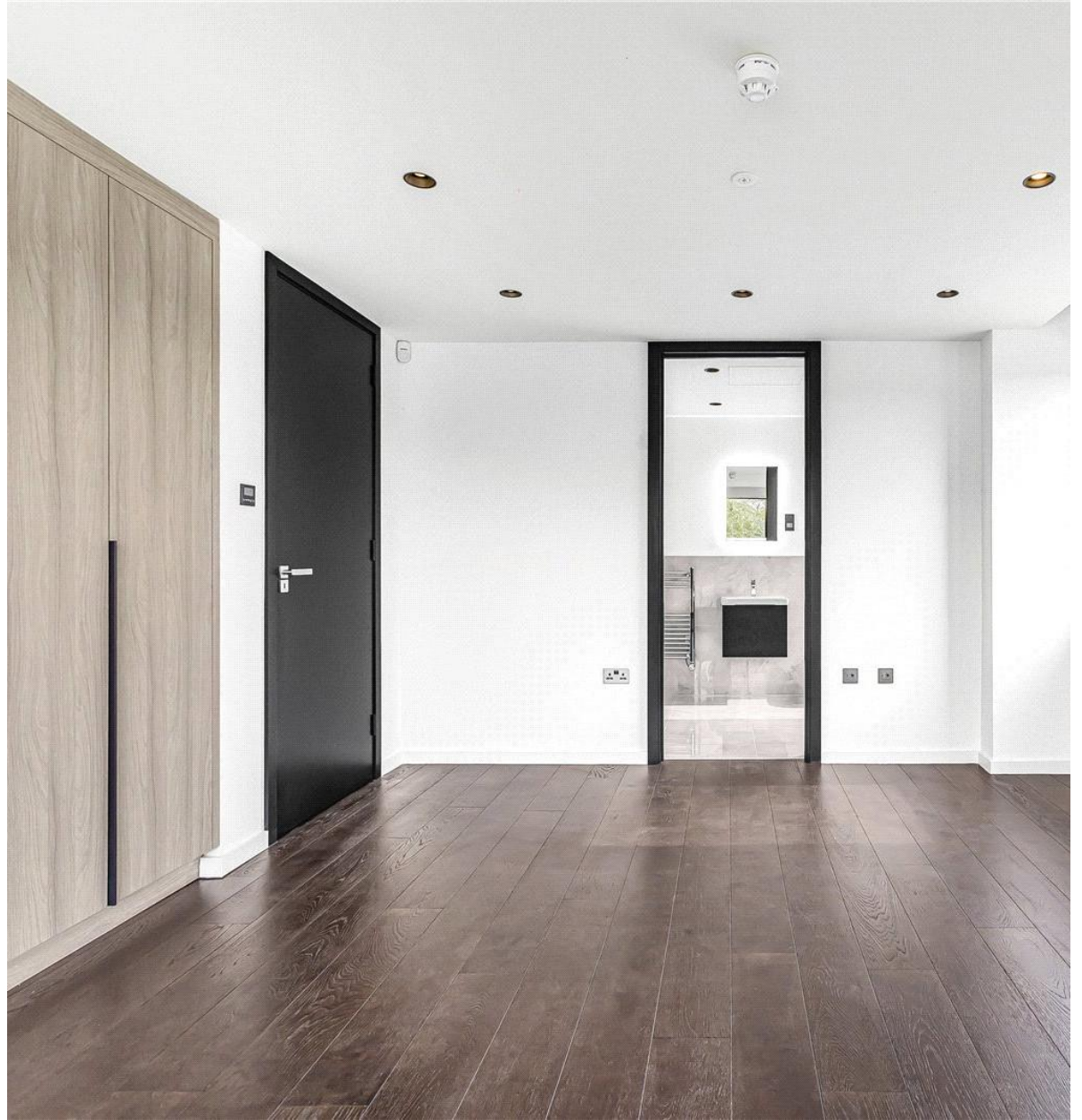
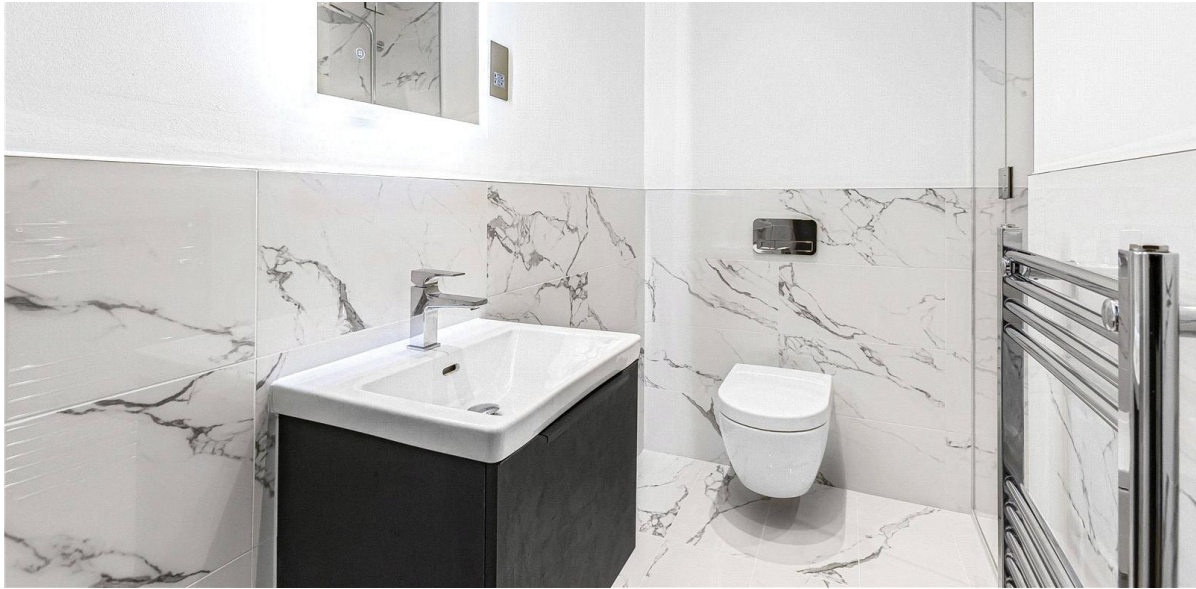
















PROPOSED GROUND FLOOR



PROPOSED GROUND FLOOR
AREA (GFA) 198.66MF (2131.8 SQFT)

NO.	DESCRIPTION	UNIT	QUANTITY
1	PROPOSED GROUND FLOOR	SQ. METERS	198.66
2	PROPOSED GROUND FLOOR	SQ. FEET	2131.8
3	PROPOSED GROUND FLOOR	SQ. METERS	198.66
4	PROPOSED GROUND FLOOR	SQ. FEET	2131.8

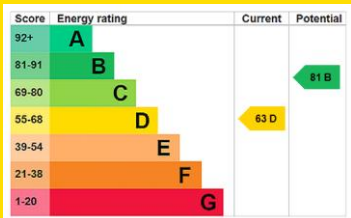


PROPOSED BASEMENT
AREA (GFA) 174.86MF (1878 SQFT)
Floor Garage: 57.26MF (613 SQFT)
Floor Floor: 117.60MF (1265 SQFT)

PLANNING

STATONS

www.statons.com



STATONS PREMIER LETTINGS

1/2 Hadley Parade
Barnet
HERTS
EN5 5SX
020 8441 9796
lettings.office@statons.com