



St Albans Road East
Hatfield AL10

14 St Albans Road East Hatfield AL10 0EH

This beautifully presented and deceptively spacious semi-detached townhouse offers approximately 1,460 sq ft (135 m²) of versatile, three-story accommodation designed for effortless modern family living. The home showcases refined finishes, featuring Junkers Black Oak hardwood flooring throughout the upper floors, comfortable underfloor heating across the ground level, and air conditioning in the master bedroom.

Key Features:

Living Space: The heart of the home is an impressive open-plan living and dining zone extending over 21 ft, complemented by a kitchen equipped with premium Fisher & Paykel appliances.

Bedrooms & Bathrooms: Four substantial double bedrooms are arranged over the upper floors, including two private en-suites, a contemporary family bathroom, and a convenient ground-floor guest cloakroom (WC).

Outdoor Retreat: French doors from the living area open to a private, minimalist, architecturally landscaped rear garden (approx. 36 ft in length) finished with basalt slabs—a perfect, low-maintenance space for relaxing or dining.

Comfort & Efficiency: Features include energy-efficient solar hot water, air conditioning and quality fittings

Parking & Location: Situated just a short stroll from the station, the property includes a private carport plus two additional parking spaces.

With its generous proportions and an excellent natural light throughout, this impressive home seamlessly blends practical design with flexible spaces—perfectly catering to modern family life, guest hosting, and a dedicated home-working environment.































Score	Energy rating	Current	Potential
92+	A		
81-91	B		
69-80	C	73 C	78 C
55-68	D		
39-54	E		
21-38	F		
1-20	G		

Approximate Gross Internal Area 1460 sq ft - 135 sq m

Ground Floor Area 546 sq ft – 51 sq m

First Floor Area 457 sq ft – 42 sq m

Second Floor Area 457 sq ft – 42 sq m



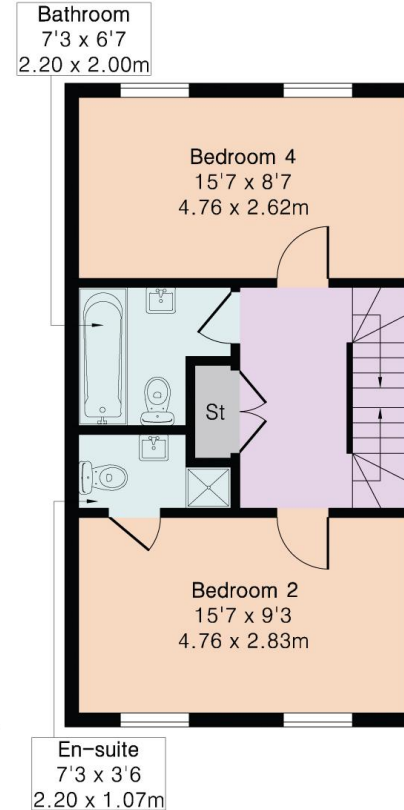
Local Authority:
Welwyn & Hatfield
Council Tax Band: E
Tenure: FREEHOLD



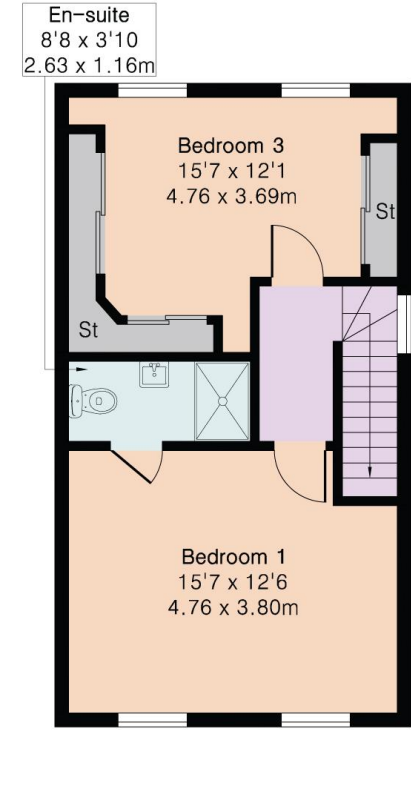
DISCLAIMER: In accordance with the 1993 Misrepresentation Act the agent had not tested any apparatus, equipment, fixtures, fittings or services and so, cannot verify they are in working order, or fit for their purpose. Neither has the agent checked the legal documentation to verify the leasehold/freehold status of the property. The buyer is advised to obtain verification from their solicitor or surveyor. Also, photographs are for illustration only and may depict items which are not for sale or included in the sale of the property. All sizes are approximate. All dimensions include wardrobe spaces where applicable.



Ground Floor



First Floor



Second Floor



Brookmans
Park Office

53 Bradmore Green, Brookmans Park, Herts, AL9 7QS

T: 01707 661144

E: brookmans@statons.com

STATONS
www.statons.com