



Odette Court

High Road, Whetstone London N20

Odette Court, High Road, Whetstone, London N20

Ideally located just a short distance from Totteridge & Whetstone High Road, this two-bedroom, two-bathroom apartment offers comfortable and practical living.

The property features a bright and well-proportioned living room with large windows that bring in plenty of natural light, creating a pleasant space to relax or entertain. The fitted kitchen is functional and equipped with integrated appliances, providing good worktop and storage space for everyday use.

Both bedrooms are of a generous size and each benefits from its own en-suite bathroom, making the layout suitable for sharers or small families. There is also a separate guest cloakroom and two storage cupboards off the hallway, offering useful additional space. Overall, this apartment presents a great opportunity for buyers looking to add their own touch.

Residents enjoy the peace of mind that comes with a secure entry system, lift access to all floors, and well-maintained communal areas.

Conveniently located close to local amenities, shops, transport links, and green spaces, this property offers an ideal blend of tranquillity and connectivity. Whether you're a first-time buyer, downsizer, or investor, this superb apartment represents an exceptional opportunity to enjoy contemporary living in a desirable location.





















Approximate Gross Internal Area 912 sq ft - 85 sq m

Score	Energy rating	Current	Potential
92+	A		
81-91	B		
69-80	C	75 C	78 C
55-68	D		
39-54	E		
21-38	F		
1-20	G		

Local Authority:

London Borough of Barnet

Council Tax Band: F

Tenure: LEASEHOLD

Years Remaining: 94 years

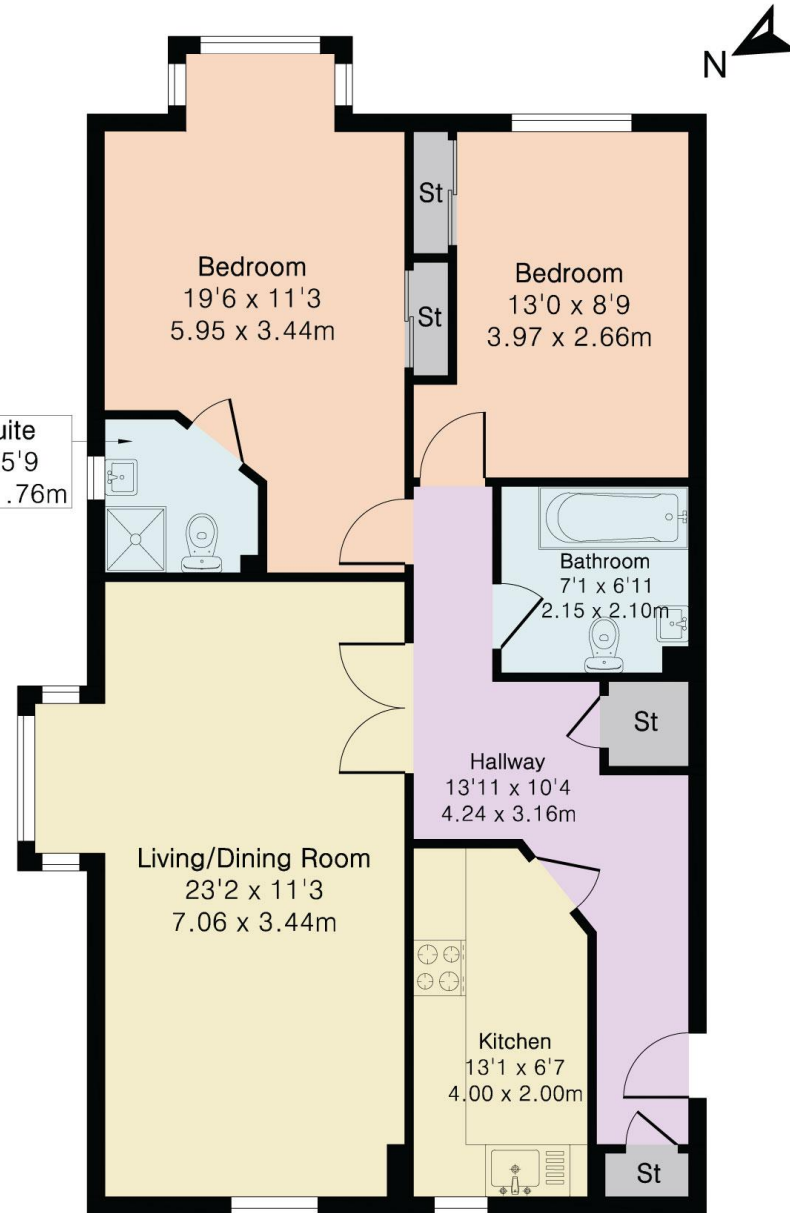
Service Charge: TBC

Ground Rent: TBC



DISCLAIMER: In accordance with the 1993 Misrepresentation Act the agent had not tested any apparatus, equipment, fixtures, fittings or services and so, cannot verify they are in working order, or fit for their purpose. Neither has the agent checked the legal documentation to verify the leasehold/freehold status of the property. The buyer is advised to obtain verification from their solicitor or surveyor. Also, photographs are for illustration only and may depict items which are not for sale or included in the sale of the property. All sizes are approximate. All dimensions include wardrobe spaces where applicable.

En-suite
5'9 x 5'9
1.76 x 1.76m



Second Floor

