

**STATONS**

# Old Orchard Close

Hadley Wood EN4





Old Orchard Close  
Hadley Wood  
Hertfordshire  
EN4 0ND

Presenting this stunning modern detached 5-bedroom house located in a peaceful and quiet neighbourhood. Spanning 2,335 sq ft, this property offers a comfortable and homely living space with 4 reception rooms and 3 bathrooms. The house is unfurnished, providing a blank canvas for you to make it your own.

The property boasts a beautifully maintained garden, perfect for outdoor relaxation or entertaining guests. Additionally, off-street parking is available for convenience.

This bright and spacious house is ideal for families looking for a contemporary and stylish home. With ample living space and modern amenities, this property provides a perfect blend of comfort and functionality. Don't miss the opportunity to make this house your dream home. Contact us today to arrange a viewing.

please note some images have used AI to create a clear and empty room.

Council Tax Band H & Enfield Council



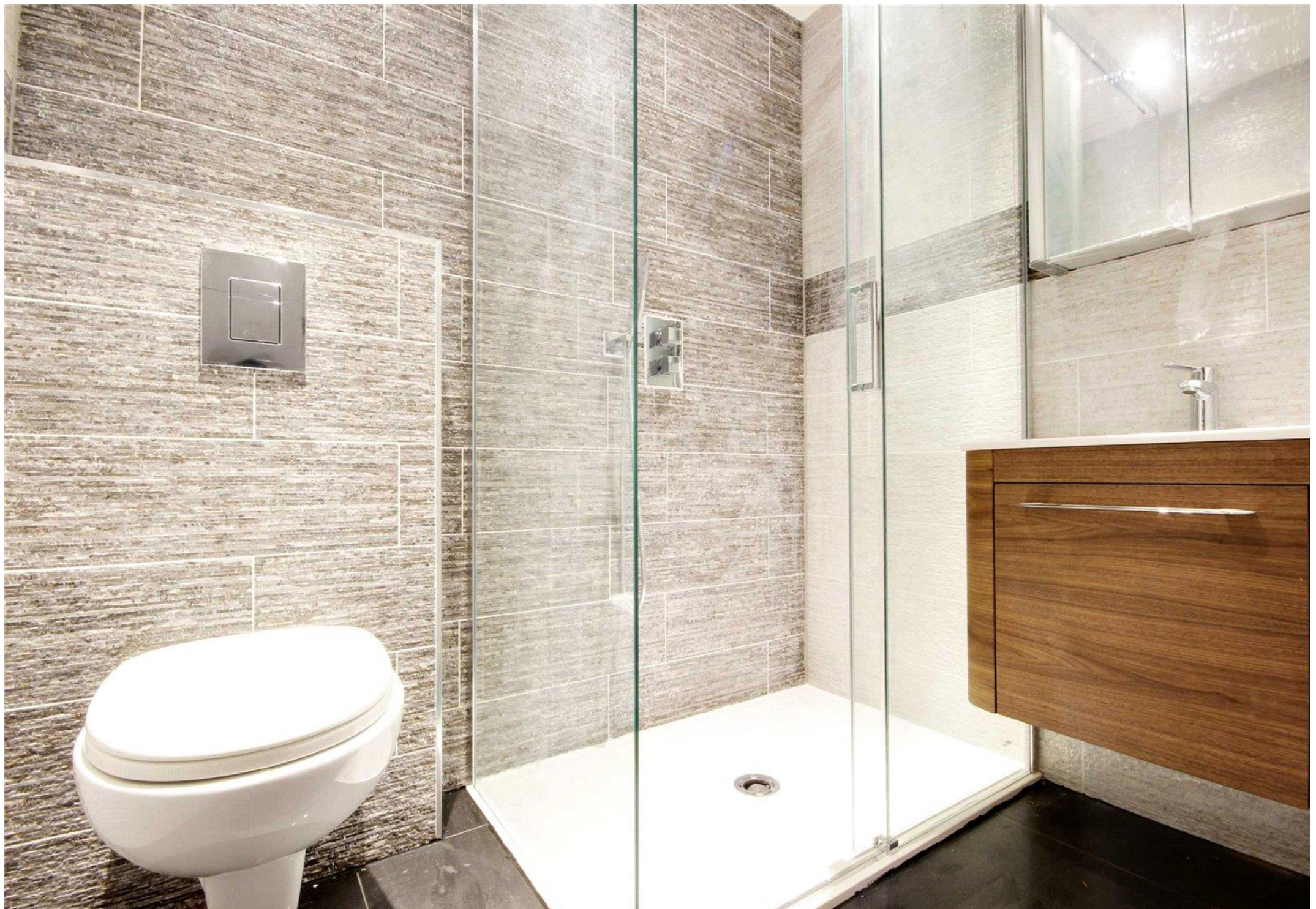
AI Generated



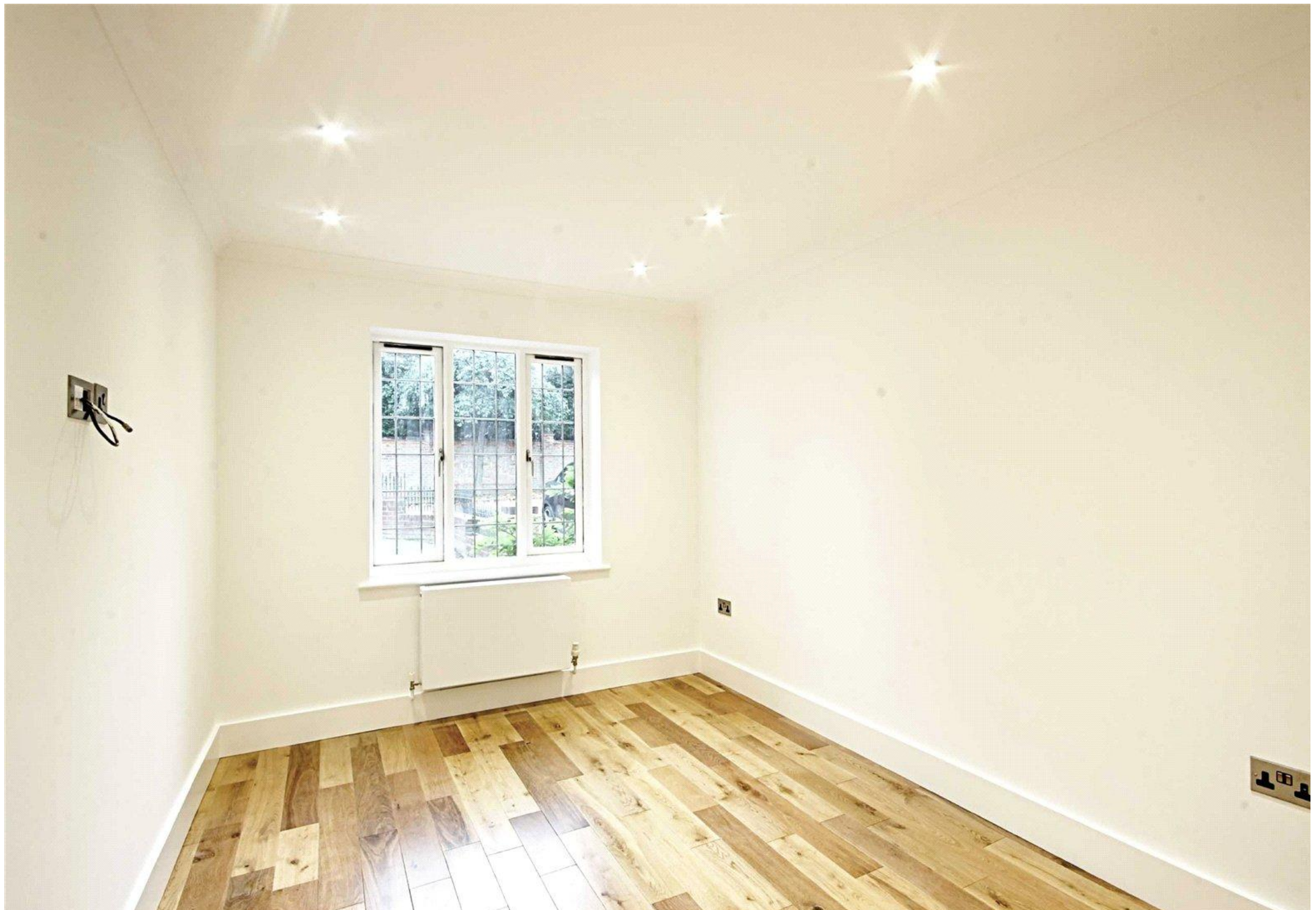






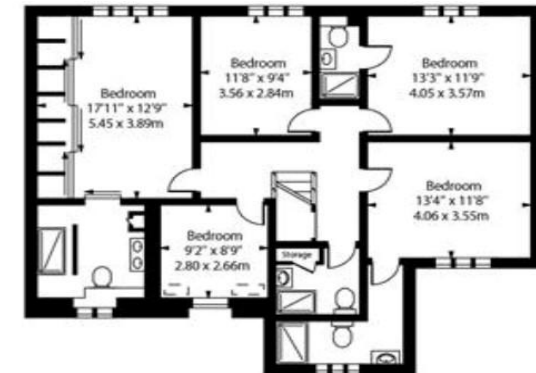
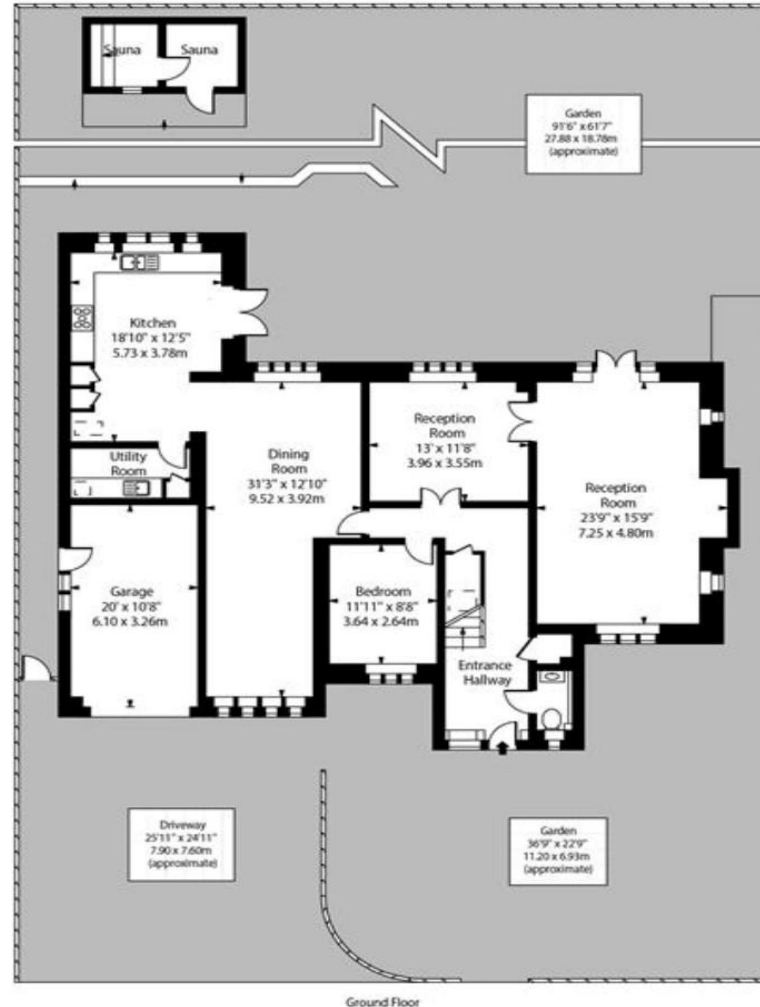








Old Orchard Close,  
Barnet, EN4



Energy Efficiency Rating		Current	Potential
Very energy efficient - lower running costs			
(92-)	<b>A</b>		
(81-91)	<b>B</b>		
(69-80)	<b>C</b>		<b>80</b>
(55-68)	<b>D</b>	<b>64</b>	
(39-54)	<b>E</b>		
(21-38)	<b>F</b>		
(1-20)	<b>G</b>		
Not energy efficient - higher running costs			
England, Scotland & Wales	EU Directive 2002/91/EC		

Approx Gross Internal Area 2665 Sq Ft - 247.55 Sq M  
(Excluding Sauna & Garage)  
 Approx Floor Area Including Restricted Heights 2887 Sq Ft - 268.2 Sq M  
(Including Garage & Excluding Sauna)

**DISCLAIMER:** In accordance with the 1993 Misrepresentation Act the agent had not tested any apparatus, equipment, fixtures, fittings or services and so, cannot verify they are in working order, or fit for their purpose. Neither has the agent checked the legal documentation to verify the leasehold/freehold status of the property. The buyer is advised to obtain verification from their solicitor or surveyor. Also, photographs are for illustration only and may depict items which are not for sale or included in the sale of the property. All size are approximate. All dimensions include wardrobe spaces where applicable.

# **STATONS**

## **STATONS PREMIER LETTINGS**

1 HADLEY PARADE  
HIGH STREET  
BARNET  
HERTS  
EN5 5SX

[lettings.office@statons.com](mailto:lettings.office@statons.com)

020 8441 9796

