



The Grange, Grange View Road
Whetstone, N20

The Grange

Presenting a charming first-floor apartment in a prime location, within walking distance of Whetstone High Road shopping centre.

Boasting one spacious bedroom, a well-appointed bathroom, and a light-filled living area, this residence is ideal for individuals seeking a comfortable urban lifestyle. The modern kitchen is equipped with high-quality appliances, making meal preparation a breeze.

Residents can enjoy the convenience of nearby amenities, including shops, restaurants, and transport links, all within easy reach. This property is perfect for those looking to embrace city living without compromising on comfort and style.

Don't miss the opportunity to make this apartment your own and experience the best of urban living. Contact us today to arrange a viewing.

LOCAL AUTHORITY: Barnet

BAND: C

Tenure: Leasehold

Service Charge PA: £TBC

Ground Rent PA: £250.00 until 2035.









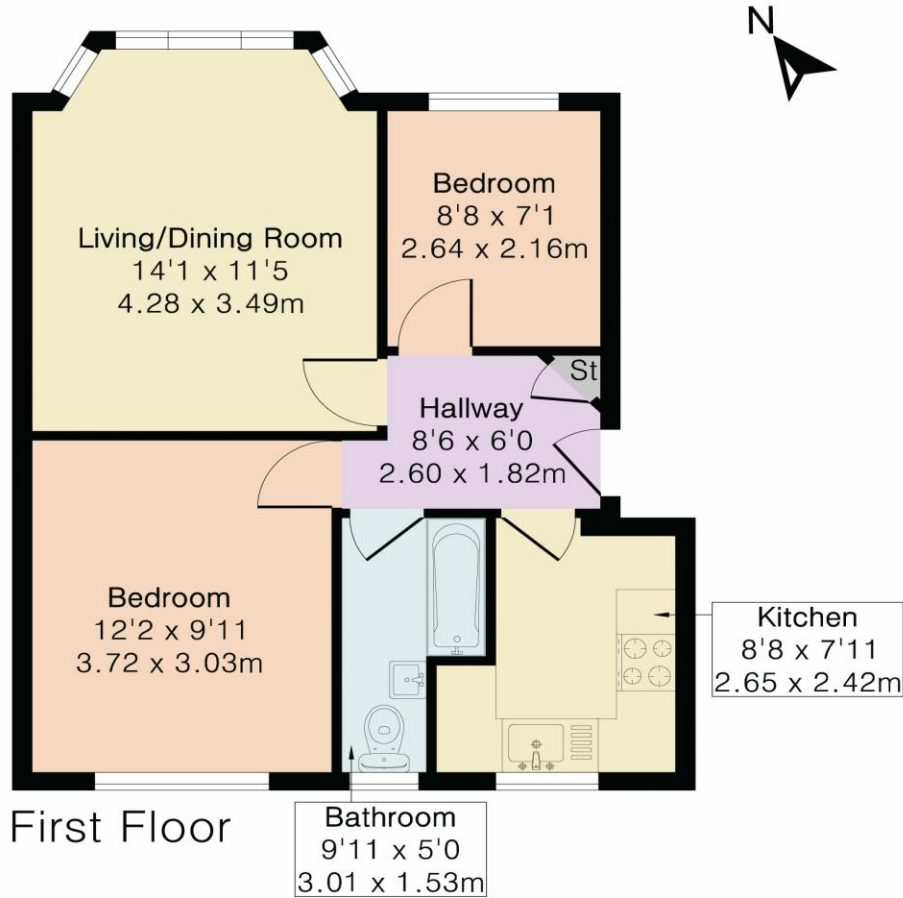








Approximate Gross Internal Area 498 sq ft - 46 sq m



Floor plan produced in accordance with RICS Property Measurement 2nd Edition. Although Pink Plan Ltd ensures the highest level of accuracy, measurements of doors, windows and rooms are approximate and no responsibility is taken for error, omission or misstatement. These plans are for representation purposes only and no guarantee is given on the total square footage of the property within this plan. The figure icon is for initial guidance only and should not be relied on as a basis of valuation.



Score	Energy rating	Current	Potential
92+	A		
81-91	B		
69-80	C	72 C	75 C
55-68	D		
39-54	E		
21-38	F		
1-20	G		

DISCLAIMER: In accordance with the 1993 Misrepresentation Act the agent had not tested any apparatus, equipment, fixtures, fittings or services and so, cannot verify they are in working order, or fit for their purpose. Neither has the agent checked the legal documentation to verify the leasehold/freehold status of the property. The buyer is advised to obtain verification from their solicitor or surveyor. Also, photographs are for illustration only and may depict items which are not for sale or included in the sale of the property. All sizes are approximate. All dimensions include wardrobe spaces where applicable.

