



Blakeney Close
Whetstone, N20

Blakeney Close

Set on a great road in Totteridge, just a one-minute walk from the Northern Line, this well-arranged three-bedroom, two-bathroom home combines everyday convenience with a calm residential setting. The ground floor offers a comfortable flow of living space, including a bright living room, a separate dining area and a practical kitchen. The property is offered chain free, making for a straightforward purchase.

Outside, the house benefits from a sunny south-west facing garden that enjoys excellent natural light throughout the day and evenings. Along the garden sits a separate garage, providing secure parking, valuable storage space or even the chance to create an outbuilding. The overall layout offers a balanced blend of functional rooms and inviting living areas suitable for families or anyone seeking additional flexibility.

There is also significant potential to extend both into the loft and to the rear, subject to the usual permissions, giving buyers room to grow and enhance the property over time. With its generous accommodation, sunny garden, garage and exceptional proximity to Totteridge station, this is a rare opportunity to secure a charming home in a highly convenient and desirable location.

LOCAL AUTHORITY: Barnet

BAND: E

TENURE: Freehold

















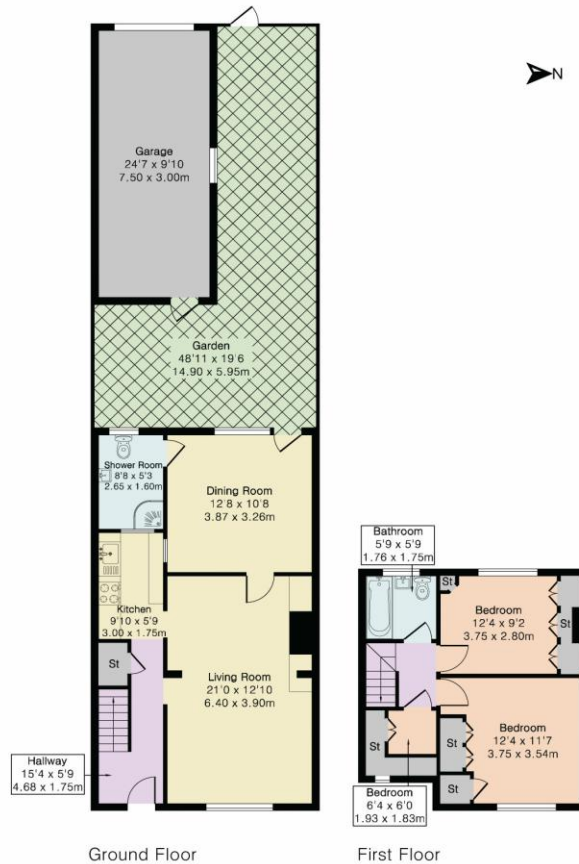


**Approximate Gross Internal Area 1021 sq ft - 95 sq m
(Excluding Garage)**

Ground Floor Area 642 sq ft – 60 sq m

First Floor Area 379 sq ft – 35 sq m

Garage Area 242 sq ft – 23 sq m



Floor plan produced in accordance with RICS Property Measurement 2nd Edition. Although Pink Plan Ltd ensures the highest level of accuracy, measurements of doors, windows and rooms are approximate and no responsibility is taken for error, omission or misstatement. These plans are for representation purposes only and no guarantee is given on the total square footage of the property within this plan. The figure icon is for initial guidance only and should not be relied on as a basis of valuation.



DISCLAIMER: In accordance with the 1993 Misrepresentation Act the agent had not tested any apparatus, equipment, fixtures, fittings or services and so, cannot verify they are in working order, or fit for their purpose. Neither has the agent checked the legal documentation to verify the leasehold/freehold status of the property. The buyer is advised to obtain verification from their solicitor or surveyor. Also, photographs are for illustration only and may depict items which are not for sale or included in the sale of the property. All sizes are approximate. All dimensions include wardrobe spaces where applicable.

