



Newsholme Drive
London, N21





Newsholme Drive

A beautifully presented two-bedroom, two-bathroom apartment set within an attractive period conversion, located in the highly sought-after Highlands Village Development.

This impressive apartment boasts high ceilings throughout and offers a spacious, light-filled reception room that flows effortlessly into a sleek, modern kitchen, fully fitted with a range of integrated appliances perfect for both everyday living and entertaining.

The property comprises two generously sized double bedrooms, including a superb principal bedroom featuring fitted wardrobes and a stylish en-suite shower room. A contemporary family bathroom completes the well-balanced accommodation. Further benefits include two parking spaces, adding both convenience and value.

Highlands Village is a highly regarded residential development, celebrated for its attractive surroundings and strong community feel.

Ideally positioned, the property offers easy access to local shops, bus routes, and excellent transport links, with nearby stations providing direct services into Moorgate and central London.

The apartment is also perfectly located for a selection of highly regarded local schools, making it an excellent choice for families.



STATONS



STATONS



STATONS



STATONS



STATONS



STATONS



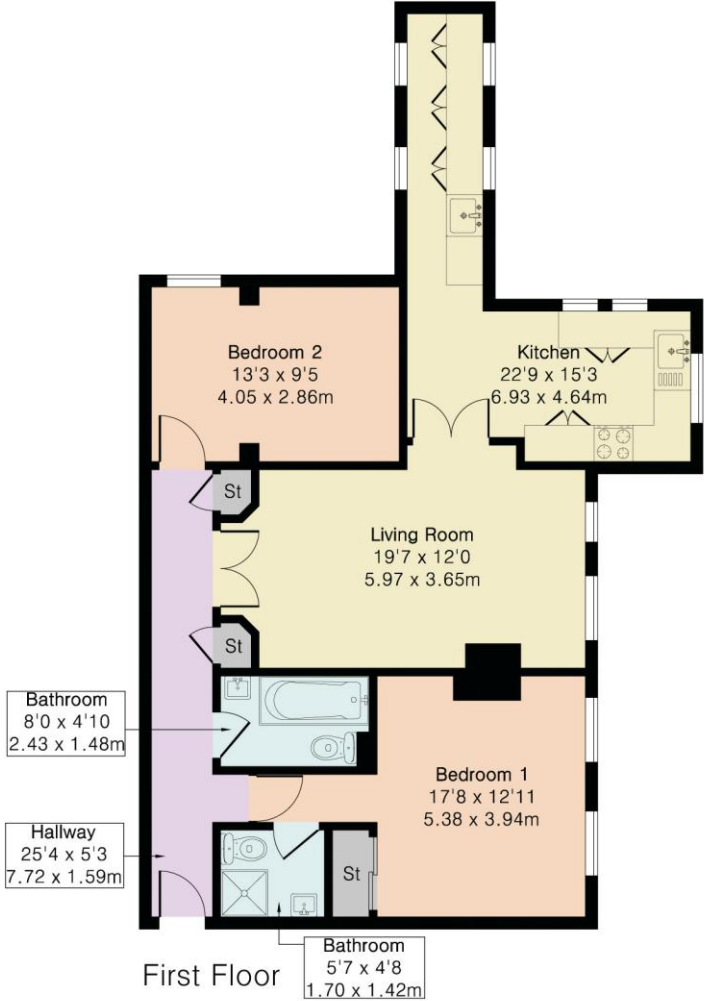
STATONS

Approximate Gross Internal Area 886 sq ft - 82 sq m

Council Tax: TBC
 Local Authority: Enfield
 Tenure: Leasehold
 Service Charge: £3,300 per annum approx.
 Ground Rent: £250 per annum approx.



Score	Energy rating	Current	Potential
92+	A		
81-91	B		
69-80	C	75 C	82 B
55-68	D		
39-54	E		
21-38	F		
1-20	G		



Floor plan produced in accordance with RICS Property Measurement 2nd Edition. Although Pink Plan Ltd ensures the highest level of accuracy, measurements of doors, windows and rooms are approximate and no responsibility is taken for error, omission or misstatement. These plans are for representation purposes only and no guarantee is given on the total square footage of the property within this plan. The figure icon is for initial guidance only and should not be relied on as a basis of valuation.





STATONS

**STATONS
HADLEY WOOD**

10 Crescent West, Hadley Wood,
EN4 0EJ

Tel: 020 8440 9797

Email: hadley@statons.com

STATONS
www.statons.com