



Quayle Crescent
Whetstone, N20

37 Quayle Crescent

Whetstone, London N20 0BH

Set just off the High Road in Totteridge & Whetstone, this impressive four-bedroom terraced home combines generous proportions with a sleek, contemporary finish, making it perfectly suited to modern family life.

From the outset, the property offers convenience with a private driveway for off-street parking. Inside, the home opens into a welcoming entrance hall that leads through to a bright and airy reception space, enhanced by large windows and a refined, modern aesthetic. The kitchen has been thoughtfully designed with quality integrated appliances, excellent storage, and a stylish living space that works effortlessly for both day-to-day living and entertaining.

Arranged over the upper floors, the home extends to almost 1,800 sq. ft. and features four well-sized bedrooms alongside three beautifully appointed bathrooms. The standout principal suite is a true retreat, complete with a spacious dressing room and a luxurious en-suite bathroom, creating a calm and private haven within the home. The remaining bedrooms are versatile, ideal for family members, guests, or those needing dedicated work-from-home space.

The location is particularly appealing, positioned just moments from Whetstone High Road with its array of shops, cafés, and amenities. Excellent transport links are also within easy reach, including Totteridge & Whetstone Underground Station and Oakleigh Park Overground, ensuring straightforward access into central London and beyond.





































Score	Energy rating	Current	Potential
92+	A		
81-91	B		
69-80	C		78 C
55-68	D	59 D	
39-54	E		
21-38	F		
1-20	G		

Approximate Gross Internal Area 1796 sq ft - 168 sq m

Ground Floor Area 579 sq ft – 54 sq m

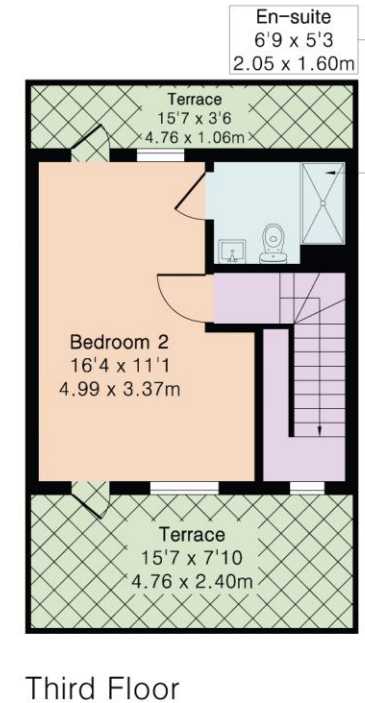
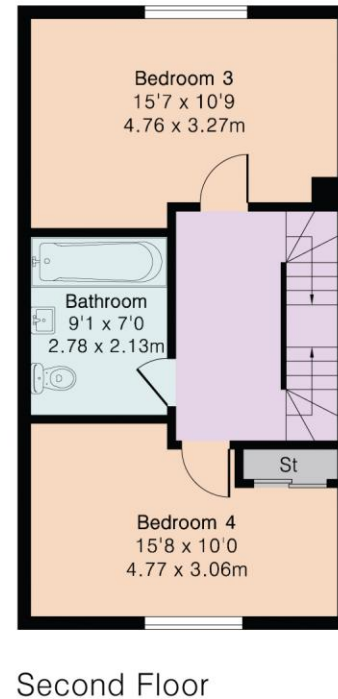
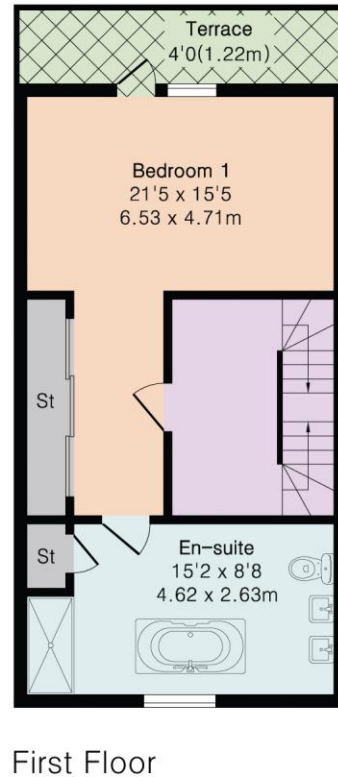
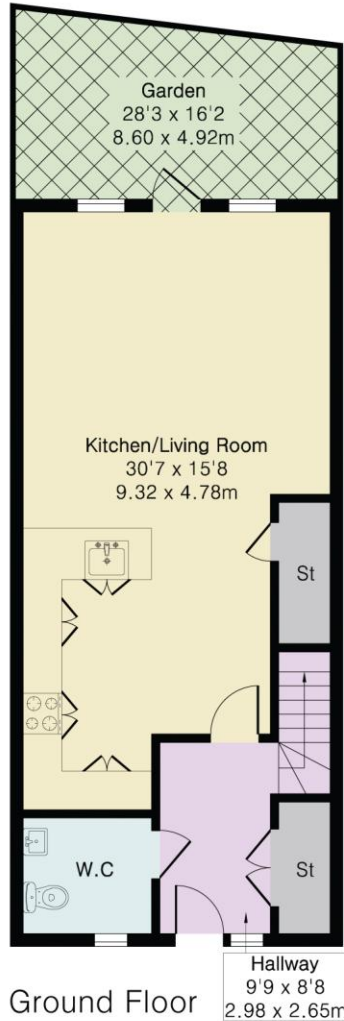
First Floor Area 480 sq ft – 45 sq m

Second Floor Area 480 sq ft – 45 sq m

Third Floor Area 257 sq ft – 24 sq m



Local Authority: Barnet
Council Tax Band: G
Tenure: Freehold



DISCLAIMER: In accordance with the 1993 Misrepresentation Act the agent had not tested any apparatus, equipment, fixtures, fittings or services and so, cannot verify they are in working order, or fit for their purpose. Neither has the agent checked the legal documentation to verify the leasehold/freehold status of the property. The buyer is advised to obtain verification from their solicitor or surveyor. Also, photographs are for illustration only and may depict items which are not for sale or included in the sale of the property. All sizes are approximate. All dimensions include wardrobe spaces where applicable.

